

# DIGITUS SOHO PRO wall-mounted enclosure - 483 mm (19") - 540x400 mm (WxD)

DN-49206  
EAN 4016032493754



**19" 12U wall mounting cabinet, SOHO PRO 595 x 540 x 400 mm, grey**

Whether in the home, office or for sub-distribution boards with limited space: With the compact 483 mm (19") solutions from the SOHO PRO series, you can install your network wherever you want. Available in four height units (4U, 7U, 9U, 12U), the wall-mounted enclosures are equipped with a full glass door and a cable entry in the top and bottom. A pair of galvanized 483 mm (19") profile rails labelled with legible height units are installed inside. These can be adjusted in depth. Each cabinet is a robust steel construction made from sheet steel up to 1.5 mm thick. The coloring takes the form of electrostatic powder coating in the standard colors grey (RAL 7035) and black (RAL 9005). The door hinges can be changed. The network enclosures are supplied unassembled in an optimized flat pack. Assembly takes place in just a few steps and is child's play thanks to the enclosed step-by-step instructions.

**The DIGITUS® wall-mounted enclosure SOHO PRO series is characterized by its efficient delivery in an optimized flat pack and particularly user-friendly installation.**

- Protection class IP20
- Lockable safety glass door
- 200° door opening angle
- 1-point locking on the front door

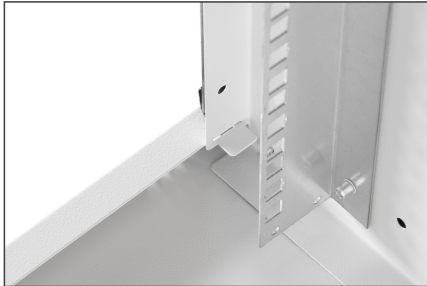
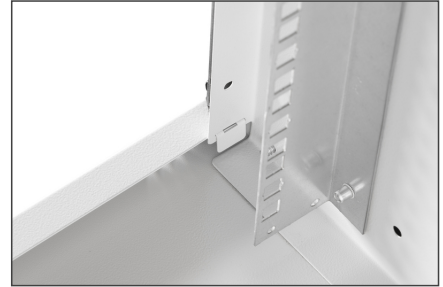
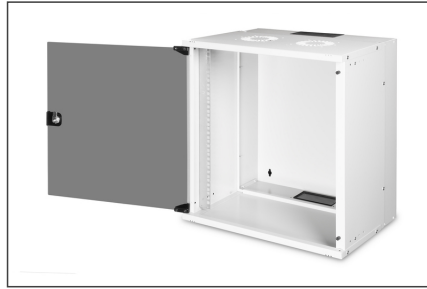
- 483 mm (19") profile rails mounted at the front inside the enclosure, galvanized
- 483 mm (19") profile rails are adjustable in depth
- 1.1 - 1.5 thick sheet steel with a high load-bearing capacity, powder-coated
- Cable entry with plastic cover in the roof and floor
- Ventilation slots for active and passive ventilation
- Installation depth for components max.: 327 mm
- Product dimensions (H x W x D): 595 x 540 x 400 mm
- Cabinet type: Wall mounting cabinet
- Color: light grey, RAL 7035
- Depth: 400 mm
- Front door: Glass door, single opening
- Load capacity: 60 kg
- Side panels: Both sides
- Units: 12
- Width: 540 mm
- IP protection class: IP20
- Mounted: no

**Package contents**

- 2x key
- 1x QIG

Logistics						
	Number (pcs)	Weight (kg)	Depth (cm)	Width (cm)	Height (cm)	cm <sup>3</sup>
Packaging Unit Carton	1	13.68	60.00	58.00	15.00	52,200.00
Packaging Unit Inside	1	13.68	60.00	58.00	15.00	52,200.00
Packaging Unit Single	1	13.68	60.00	58.00	15.00	52,200.00
Net single without Packaging	1	12.63	40.00	54.00	59.50	0.00

More images:



**DN-43206**  
Wall Mounting Cabinet SOHO PRO  
483mm (19") - 540x400mm (WD)

**DIGITUS**

- Slide the top panel into the body of the cabinet out of the box.
- Open the top panel panels off the body.
- Slide the bottom panel into the body in the direction of the arrows. As soon as the clicks, insert the recesses of the bottom panel into the panel of the body.
- Fix the bottom panel to the body by the screws. Change the screw panel to the screws to be mounted to all cabinet body disclosed above. Then, fix the screws. Be careful: screws should be mounted in the correct direction. For the correct mounting, plastic door stopper from needs to be mounted before for the top edge of the panel door.

**DN-43206**  
Wall Mounting Cabinet SOHO PRO  
483mm (19") - 540x400mm (WD)

**DIGITUS**

- Slide the top panel into the body in the direction of the arrows. The direction of opening of the top panel has to be identical to the cabinet body of the body. Insert the recess of the panel door into the top edge of the cabinet body. Be careful: the top panel must be inserted in the correct direction of the top edge of the body.
- Fix the cabinet on the wall. The bottom panel needs the screws. Check the measures of the bottom panel elsewhere and the measures of the top panel assembly.
- Close the top edge of the cabinet to finish the installation. Your DIGITUS cabinet is ready to use.