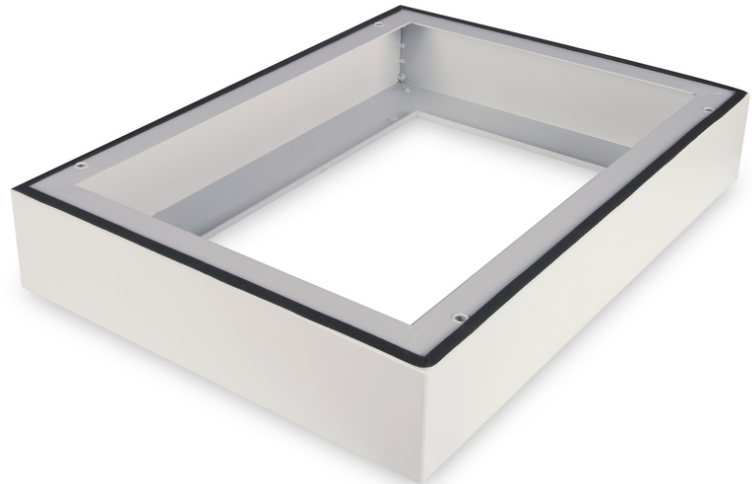


# DIGITUS Base for IP55 wall-mounted enclosure - 600x450 mm (WxD)

DN-19 PLINTH-45-I-OD  
EAN 4016032444169



**Plinth for IP55 outdoor wall mounting cabinet 100x600x450 mm, color grey (RAL 7035)**

The base for 483 mm (19") IP55 wall-mounted enclosures extends the height by 100 mm and provides space for structured cabling. Installation is carried out in simple steps with the enclosed screws. The base is also equipped with a seal to maintain the IP55 degree of protection. Enables installation on a solid floor foundation.

- Simple installation under the cabinets
- 1.5 - 2.0 mm thick sheet steel

- Maximum load capacity: 1000 kg
- Color: light grey, RAL 7035
- Depth: 450 mm
- Width: 600 mm
- For cabinet series: Wall Mounting
- Inch form factor (IEC 60297): 482.6 mm (19")

**Package contents**

- Fastening material

Logistics						
	Number (pcs)	Weight (kg)	Depth (cm)	Width (cm)	Height (cm)	cm³
Packaging Unit Carton	1	5.60	47.00	62.00	12.00	34,968.00
Packaging Unit Inside	1	5.60	47.00	62.00	12.00	34,968.00
Packaging Unit Single	1	5.60	47.00	62.00	12.00	34,968.00
Net single without Packaging	1	4.50	45.00	60.00	10.00	0.00