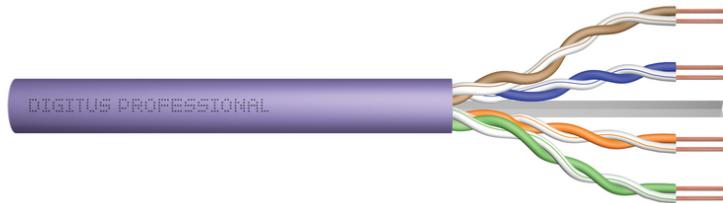


# DIGITUS CAT 6 U/UTP installation cable, 500 m, Dca

DK-1614-VH-5  
EAN 4016032442141



**CAT 6 U-UTP installation cable, 250 MHz Dca (EN 50575), AWG 23/1, 500m drum, sx, pu**

The Digitus Cat 6 U/UTP installation cable is designed for use in the structured data center and the building cabling according to ISO/IEC 11801, DIN EN 50288-6-1, DIN EN 50173, IEC 60332-1. The cable is perfectly suitable for the transmission of both analog and digital data and also supports POE and POE+.

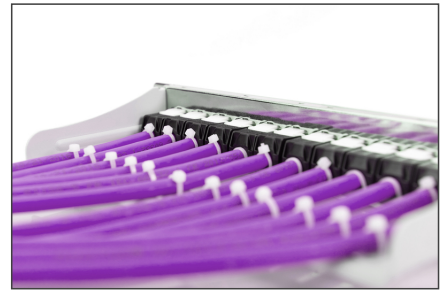
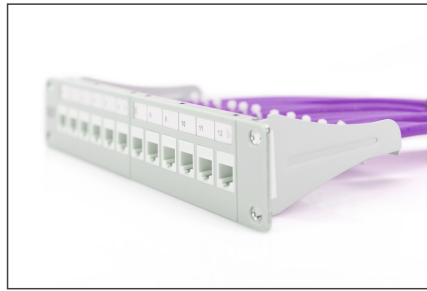
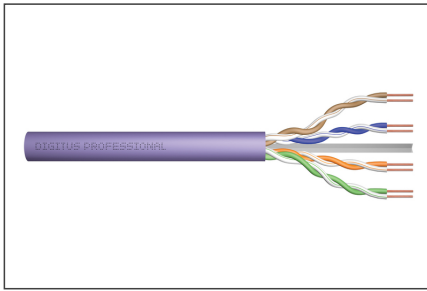
**Future-oriented standards and high-end quality for your network.**

- Physical properties:
- Conductor: Bare annealed copper, solid AWG 23/1
- System/s of AVCP: AVCP 3
- Insulation: HD-PE (High Density Polyethylene)
- Total number of insulated conductors: 8, twisted in 4 pairs
- Color code: Blue-white, orange-white, green-white, brown-white
- Individual pair shield: None
- Overall shielding: None
- Outer sheath: Eca to B2ca acc. to EN 50575; LSZH
- Outer sheath diameter (nominal): 0,5 mm (Eca); 0,6 mm (Dca); 1,0 mm (Cca); 1,0 mm (B2ca)
- Outer sheath color: Purple (RAL 4005)
- Mechanical properties:
- Tensile loading: 150N max.
- Dynamic bending radius: 8x AD mm min.
- Static bending radius: 4x AD mm min.
- Shipping- and storage temperature range: -20 °C up to +60 °C

- Operating temperature range: -20 °C up to +75 °C
- Installation temperature range: 0 °C up to +50 °C
- Overall diameter Simplex (nominal): 6,1 mm (Eca); 6,3 mm (Dca); 6,8 mm (Cca); 6,8 mm (B2ca)
- Weight (kg/km): 41 kg (Eca); 42 kg (Dca); 44 kg (Cca); 44 kg (B2ca)
- Electrical properties:
- Impedance: 100±5Ohm @ 1 - 250MHz
- Capacitance: 40 pF/m nominal @ 800 Hz
- Capacitance unbalance (pair-ground): 1.5 pF/m max. @ 1 KHz
- Insulation resistance: 5 GOhm x km min.
- DC loop resistance: 147 Ohm/km max. (2% max. resistance unbalance)
- Voltage resistance: 72 Vdc max.
- Coupling attenuation: CA-Type 3
- Signal propagation delay: 535 nS/100 m max.
- Propagation delay: 20 nS/100 m max.
- Separating class: „b“ acc. to EN 50174-2
- NVP: 69%
- Assortment: Twisted Pair Installation Cables
- Category: CAT 6
- Shielding: U-UTP, unshielded
- CPR: Dca
- Length: 500 m
- Color: violet
- Jacket: LSOH
- Structure: 4 x 2 AWG 23/1, solid twisted pair

| Logistics                    |              |             |            |            |             |                 |
|------------------------------|--------------|-------------|------------|------------|-------------|-----------------|
|                              | Number (pcs) | Weight (kg) | Depth (cm) | Width (cm) | Height (cm) | cm <sup>3</sup> |
| Packaging Unit Carton        | 1            | 26.00       | 36.00      | 36.00      | 30.00       | 38,880.00       |
| Packaging Unit Inside        | 1            | 26.00       | 36.00      | 36.00      | 30.00       | 38,880.00       |
| Packaging Unit Single        | 1            | 26.00       | 36.00      | 36.00      | 30.00       | 38,880.00       |
| Net single without Packaging | 1            | 0.00        | 0.00       | 0.00       | 0.00        | 0.00            |

More images:



**DIGITUS**

AWG 23/1, 250 MHz, 1 Gbit Ethernet, CAT 6, LSZH, Dca

**CAT 6 U/UTP Installation Cable, 500m, Simplex, D<sub>ca</sub>**

**DIGITUS**

DK.1614-VH-S // CAT 6 U/UTP Installation Cable, 500m, Simplex, D<sub>ca</sub>

Anwendungsbeispiel  
Example of use

**DIGITUS**

DK.1614-VH-S // CAT 6 U/UTP Installation Cable, 500m, Simplex, D<sub>ca</sub>

Kabelquerschnitt  
Cable cross section

**DIGITUS**

| Produktdaten Product Information                                                   | Physikalische Spezifikationen Physical Properties       |
|------------------------------------------------------------------------------------|---------------------------------------------------------|
| <b>Bezeichnung:</b> CAT 6 U/UTP Installation Cable, 500m, Simplex, D <sub>ca</sub> | <b>Teilenummer:</b> DK.1614-VH-S                        |
| <b>AWG:</b> 23/1                                                                   | <b>Material:</b> Polyethylene (PE) / Polypropylene (PP) |
| <b>Frequenz:</b> 250 MHz                                                           | <b>Wickellänge:</b> 500m                                |
| <b>Bandbreite:</b> 1 Gbit Ethernet                                                 | <b>Wickelart:</b> 100m / 200m / 500m                    |
| <b>Kategorie:</b> CAT 6                                                            | <b>Wickelart:</b> 100m / 200m / 500m                    |
| <b>Flammverhalten:</b> LSZH                                                        | <b>Wickelart:</b> 100m / 200m / 500m                    |
| <b>CE-Kennzeichnung:</b> Dca                                                       | <b>Wickelart:</b> 100m / 200m / 500m                    |

**DIGITUS**

Leistungsmerkmale Performance Properties

| 10BASE-T | 100BASE-T | 1000BASE-T | 10GBASE-T | 40GBASE-T | 100GBASE-T | 400GBASE-T |
|----------|-----------|------------|-----------|-----------|------------|------------|
| 10       | 100       | 1000       | 10000     | 40000     | 100000     | 400000     |
| 10       | 100       | 1000       | 10000     | 40000     | 100000     | 400000     |
| 10       | 100       | 1000       | 10000     | 40000     | 100000     | 400000     |

**3P PARTY**

**Compliance Statement**  
Emitted Class E / Category 6  
ISO/IEC EN 61887-4  
Four Connector Channel  
D-88523 Löhrdorf, Germany

intertek

ETL Verified Certificate of Conformance No. 1427591-0001

Amprobe Electronic GmbH

**GHMT**

**Certificate**  
No. 251A7a-18-D

**Zertifikat**  
Nr. 251A7a-18-D

Class E

Class E

**DIGITUS**

**GHMT Type Approval**

**DIGITUS**

**GHMT Type Approval**

| GHMT Bewertung   | Benennung | Leistungsmerkmale (AWG) | Anzahl der konfigurierbaren Bitt | Zusätzliche Anforderungen                                                                           |
|------------------|-----------|-------------------------|----------------------------------|-----------------------------------------------------------------------------------------------------|
| B2 <sub>ca</sub> | Sehr hoch | 23                      | 1+                               | • Typspezifisch<br>• Konform mit EN 61887-4<br>• Konform mit EN 61887-4<br>• Konform mit EN 61887-4 |
| C <sub>ca</sub>  | Hoch      | 23                      | 1+                               | • Typspezifisch<br>• Konform mit EN 61887-4<br>• Konform mit EN 61887-4                             |
| D <sub>ca</sub>  | Mittel    | 23                      | 3                                | • Typspezifisch<br>• Konform mit EN 61887-4<br>• Konform mit EN 61887-4                             |
| E <sub>ca</sub>  | Gering    | 23                      | 1                                | • Typspezifisch<br>• Konform mit EN 61887-4<br>• Konform mit EN 61887-4                             |

