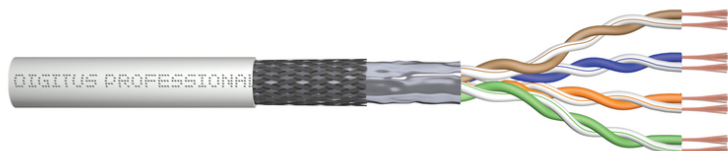


DIGITUS CAT 5e SF/UTP twisted pair patch cord, raw

DK-1531-P-1-1
EAN 4016032425915



CAT 5e SF-UTP patch cable, raw 100 m, paper box, AWG 26/7, PVC, simplex, grey

The raw patch cords are manufactured and tested acc. to the ISO/IEC 11801 and DIN EN 50173 specifications. They will guarantee that the installed cabling system is compliant with the ISO & EN channel specification requirements and therefore provide optimum performance levels for your cabling. The raw patch cords are suitable for the direct assembly of RJ45 connector in order to produce patch cords.

Future-oriented standards and high-end quality for your network.

- Insulation: HD-PE
- Outer sheath diameter: 0.55 mm nominal
- Overall diameter: 5.6 mm nominal
- Tensile loading: 150 N max.
- Dynamic bending radius: 8x AD mm min.
- Static bending radius: 4x AD mm min.
- Shipping- and storage temperature range: -10 °C up to +75 °C
- Operating temperature range: -10 °C up to +60 °C
- Installation temperature range: 0 °C up to +50 °C
- DC loop resistance: ≤ 280 Ω km
- Resistance unbalance ≤ 2%
- Insulation resistance: ≥ 2000MΩ/km @500V
- Capacitance: nom. 48 nF/km @ 800 Hz

- Capacitance unbalance (pair-ground): ≤ 1500 nF/km
- Characteristic Impedance: 100 ± 15 Ohm @ 10-100 MHz
- NVP: 67%
- Propagation delay: nom. ≤ 555 ns/100 m
- Delay skew: nom. ≤ 50 ns/ 100 m
- Test voltage (DC 1 min) core/core: 1000V
- Coupling attenuation: ≥ 40 dB
- Capacitance: 48 pF/m nominal @ 800 Hz
- Capacitance unbalance (pair-ground): 1.5 pF/m max. @ 1 KHz
- Insulation resistance: 2 GOhm x km min.
- DC loop resistance: 147 Ohm/Km max. (2% max. resistance unbalance)
- Voltage resistance: 72 Vdc max.
- Coupling attenuation: 40 dB
- Signal propagation delay: 450 nS/100 m max.
- Propagation delay: 20 nS/100 m max.
- Assortment: Twisted Pair Patch Cables
- Category: CAT 5e
- Shielding: SF-UTP, foil and braid shielding
- Length: 100 m
- Color: grey
- Jacket: PVC
- Slim Version: no
- Structure: 4 x 2 AWG 26/7, twisted pair
- Flat Version: no

Logistics						
	Number (pcs)	Weight (kg)	Depth (cm)	Width (cm)	Height (cm)	cm ³
Packaging Unit Carton	4	13.90	38.00	29.00	29.00	31,958.00
Packaging Unit Inside	1	3.48	27.00	27.00	9.00	6,561.00
Packaging Unit Single	1	3.48	27.00	27.00	9.00	6,561.00
Net single without Packaging	1	2.85	10,000.00	5.60	5.60	0.00