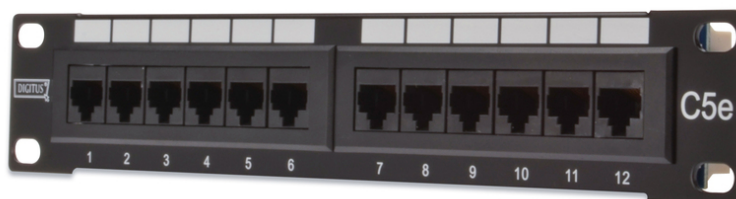


DIGITUS Painel de conectores DIGITUS CAT 5e, Classe D, não revestido

DN-91512U
EAN 4016032241447



CAT 5e patch panel, unshielded, 12-port RJ45, LSA, 1U, 254 mm(10"), bl, 482x44x109 mm

The CAT 5e Patch Panels for 254 mm (10") rack mount from DIGITUS® are tested and according to ISO/IEC 11801 and EN 50173. Cable installation takes place via LSA strips which are color coded acc. EIA/TIA 568B. The housing consists of galvanized, cold-rolled steel, acc. EN1.4301, UNS S30400, AISI 304 and LMSAD110.

Melhor desempenho e melhor qualidade de ligação com a rede.

- Características gerais:

- Instalação de cabo via régua LSA, codificação de cor de acordo com EIA/TIA 568 A & B
- Ligação central à terra
- 360° cobertura revestida
- Cor: Preto (RAL 9005)
- Color: black, RAL 9005
- Ports: 12
- Units: 1
- Category: CAT 5e

Logistics						
	Number (pcs)	Weight (kg)	Depth (cm)	Width (cm)	Height (cm)	cm³
Packaging Unit Carton	20	7.18	60.50	22.00	30.50	40,595.50
Packaging Unit Inside	1	0.36	28.20	6.70	4.80	906.91
Packaging Unit Single	1	0.36	28.20	6.70	4.80	906.91
Net single without Packaging	1	0.00	3.00	4.50	25.00	337.50

More images:

