

DIGITUS Wall-mounted network cabinet, 19" 9U, 600x450 mm, glass door, gray, one-piece, not assembled, 60kg

DN-WU19 09U/450
EAN 5907772595039



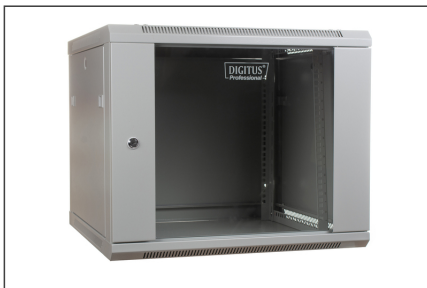
Digitus wall-mounted network cabinets have a durable steel sheet construction. The side panels are removable, and wall installation is quick and easy. Due to their flexible design, these cabinets are ideal for all current IT and telecommunications applications.

Attributes

- Cabinet type: Wall mounting cabinet
- Color: light grey, RAL 7035

- Depth: 450 mm
- Front door: Glass door, single opening
- Load capacity: 60 kg
- Units: 9
- Width: 600 mm
- IP protection class: IP20
- Mounted: no

More images:



Safety notes

- Ensure adequate ventilation to prevent the installed devices from overheating.
- Network cabinets should not be overfilled and the ventilation openings must not be blocked.
- Cables should be laid neatly and organized in cable ducts or trays.
- Use surge protection devices to protect sensitive devices from power surges or lightning strikes.
- Avoid moisture or wetness while observing the respective IP protection class.

- Ensure that the cabinet and the devices used are properly earthed.
- In regions with frequent thunderstorm activity, professional lightning protection should be integrated into the power supply.
- To avoid uneven loading, always mount the heaviest units at the bottom of the cabinet.
- Disconnect the installed devices from the power supply during maintenance or installation work.

EU responsible person

EU based economic operator ensuring the product complies with the required regulations.

ASSMANN Electronic GmbH
Auf dem Schüffel 3
Lüdenscheid, Germany
<https://www.assmann.com>
info@assmann.com