

# DIGITUS Wall-mounted network cabinet, 19" 4U, 550x350 mm, solid door, gray, one-piece, assembled, 30kg

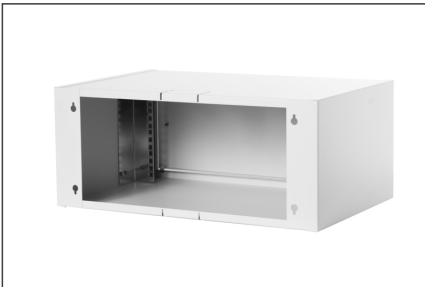
CL-19 04U-MD  
EAN 5907772594919



## Attributes

- Cabinet type: Wall mounting cabinet
- Color: light grey, RAL 7035
- Front door: Steel door, closed, single opening
- Load capacity: 30 kg
- Units: 4
- Width: 550 mm
- IP protection class: IP20
- Mounted: yes

## More images:



## Safety notes

- Ensure adequate ventilation to prevent the installed devices from overheating.
- Network cabinets should not be overfilled and the ventilation openings must not be blocked.
- Cables should be laid neatly and organized in cable ducts or trays.
- Use surge protection devices to protect sensitive devices from power surges or lightning strikes.
- Avoid moisture or wetness while observing the respective IP protection class.
- Ensure that the cabinet and the devices used are properly earthed.
- In regions with frequent thunderstorm activity, professional lightning protection should be integrated into the power supply.
- To avoid uneven loading, always mount the heaviest units at the bottom of the cabinet.
- Disconnect the installed devices from the power supply during maintenance or installation work.

## EU responsible person

EU based economic operator ensuring the product complies with the required regulations.

ASSMANN Electronic GmbH  
Auf dem Schüffel 3  
Lüdenscheid, Germany  
<https://www.assmann.com>  
[info@assmann.com](mailto:info@assmann.com)