

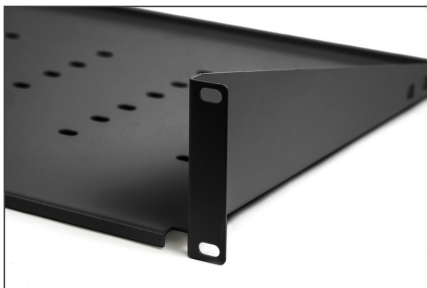
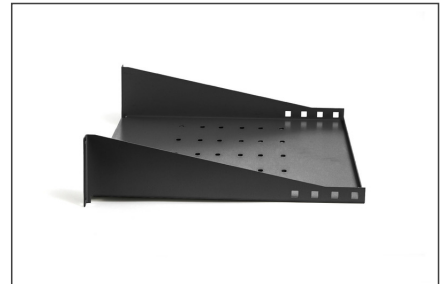
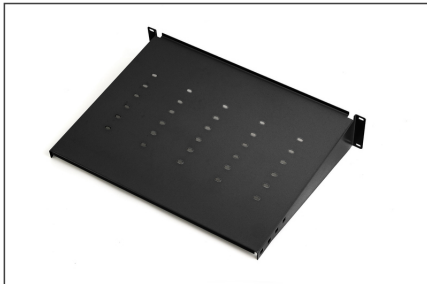
# DIGITUS Shelf Fixed 19", 2U, 350 mm, 15kg load capacity, 2-point mounting, black, screws included

TN-19-350-2U-BK  
EAN 5907772592021



General Properties • Width: 19" • Height: 1U, 2U • Load Capacity: 15kg, 25kg • Color: Black, Grey • Mounting Method: 2-point, 4-point • Material: Powder-coated steel sheet • Screws and mounting bracket (for 4-point mounted shelves) included

## More images:



## Safety notes

- When installing and using the accessory product for network cabinets, observe the respective safety instructions of the manufacturer or the cabinet system in which you want to use the accessory.

**EU responsible person**

EU based economic operator ensuring the product complies with the required regulations.

ASSMANN Electronic GmbH  
Auf dem Schüffel 3  
Lüdenscheid, Germany  
<https://www.assmann.com>  
[info@assmann.com](mailto:info@assmann.com)