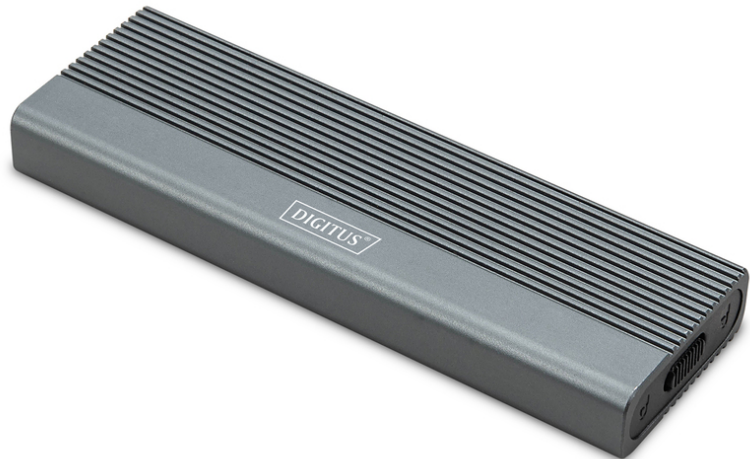


# DIGITUS USB M.2 hard disk enclosure, SSD, external, NVMe + SATA, 10Gbps (NVMe) 6 Gbps (SATA), USB3.1 Gen2, aluminum, toolfree

DA-71156  
EAN 4016032497561



### USB hard disk enclosure, external, NVMe + SATA 10Gbps(NVMe) 6 Gbps (SATA), USB3.1 Gen2, alu, toolfree

The DA-71156 USB hard disk enclosure offers a versatile and powerful storage solution for both NVMe and SATA SSDs. With support for M.2 modules in 2230, 2242, 2260 and 2280 formats and a maximum storage capacity of up to 8 TB, it is compatible with a wide range of SSDs. The data transfer rate is 10 Gbps for NVMe and 6 Gbps for SATA, while the USB 3.1 Gen2 interface is backwards compatible with USB 3.1, 3.0, 2.0 and 1.1. The tool-free design allows for easy installation and the robust JMS581DL chipset ensures reliable and efficient performance. An integrated LED indicator makes it easy to monitor SSD status, and the durable Pantone 430C aluminum enclosure provides excellent passive heat dissipation. With compact dimensions of 101x32x10 mm and a weight of only 97 g, the housing is ideal for mobile use. It supports plug-and-play and is powered directly via the USB port. The enclosure is compatible with Windows (11, 10, 8, 7, XP, 2000), macOS, Linux (2.4.x or higher), Google Chrome OS (9.x or higher), Android and iOS and offers comprehensive support for USB-C products.

**The DA-71156 M.2 SATA & NVMe SSD Enclosure will become your preferred solution for high capacity and high speed storage. This elegant, tool-less enclosure supports mini SSDs in M.2 B+M key format.**

- Supported Mini SSD in format: M.2, M.2, B+M Key(NVMe)
- Supported storage technology: NVMe
- Max. supported capacity: 8TB

- Installation method: tool-free
- Data transfer rate: SATA: 6 Gbit/s, NVMe: 10 Gbit/s
- Supports M.2 modules in the format:2230,2242,2260,2280
- Supported keys: M Key, B+M Key (NVMe)
- USB standard: USB 3.1 Gen2
- Backwards compatible with USB: 3.1/ 3.0 / 2.0 / 1.1
- Chipset: JMS581DL
- LED activity indicator:yes
- Housing: Aluminum
- Heat dissipation: passive
- Supports Plug & Play
- Power supply via USB connection
- Supports Win 11,10, 8, 7
- Supports: Android / iOS
- Supports macOS , Linux 2.4.x or higher, Google Chrome OS 9.x or higher
- Operating temperature: 5 to 50°C
- Storage temperature: -40 to 70°C
- Humidity during operation: 5 to 90% (non-condensed)
- Dimensions: 101x32x10 mm
- Weight: 97g
- Color: Pantone 430C
- USB-C products: yes

#### Package contents

- External SSD enclosure, M.2 - USB Type-C™
- USB cable (C - A), 25 cm
- QIG

Logistics						
	Number (pcs)	Weight (kg)	Depth (cm)	Width (cm)	Height (cm)	cm³
Packaging Unit Carton	50	8.25	40.00	48.50	18.50	35,890.00
Packaging Unit Inside	1	0.17	0.00	0.00	0.00	0.00
Packaging Unit Single	1	0.17	15.20	9.40	3.90	557.23
Net single without Packaging	1	0.12	15.20	9.40	3.90	557.23

More images:



Safety notes

- Overloading can lead to overheating and damage to the appliance or the connected peripherals.
- If necessary, use an external power supply to ensure stable performance.
- If devices such as external hard disks or printers that require a high power consumption are connected, the device should be used with an external power supply. Otherwise, the device could be overloaded or functional problems could occur.
- Do not expose the device to rain, moisture, vapors or liquids.
- Do not insert any objects into the device.
- Do not attempt to repair the unit or open the housing without authorization. You risk an electric shock!
- Ensure adequate ventilation to prevent damage due to overheating.
- Dust, moisture, vapors and strong cleaning agents or solvents can cause damage to the device.
- Disconnect the appliance from the power supply and the connected devices before cleaning.
- Clean the device with a dust-free cloth.

EU responsible person

EU based economic operator ensuring the product complies with the required regulations.

ASSMANN Electronic GmbH  
 Auf dem Schüffel 3  
 Lüdenscheid, Germany  
<https://www.assmann.com>  
[info@assmann.com](mailto:info@assmann.com)