

# DIGITUS Wall Mounting Cabinet SOHO PRO - 483 mm (19") - 540x400 mm (WxD)

DN-49206  
EAN 4016032493754



### 19" 12U wall mounting cabinet, SOHO PRO 595 x 540 x 400 mm, grey

Whether for private areas, office or sub-distribution units with limited space: With the compact 483 mm (19") solutions from the SOHO PRO series, you can install your network wherever you like. The wall housings available in four rack units (4 rack units, 7 rack units, 9 rack units, 12 rack units) are equipped with a full glass door as well as a cable entry in the roof and floor. A pair of galvanized 483 mm (19") profile rails labeled with easy-to-read rack units are installed on the inside. Their depth can be adjusted. Each cabinet features a robust steel design made of up to 1.5 mm thick sheet steel. Coloring is done with electrostatic powder coating in the standard colors gray (RAL 7035) or jet black (RAL 9005). The door hinges can be switched. The network are unassembled on delivery, in an optimized flat pack. Installation takes just a few steps and is extremely easy thanks to the step-by-step instructions included.

**The DIGITUS® Wall Housing SOHO PRO series is characterized by efficient delivery in an optimized flat pack as well as particularly user-friendly installation.**

- Protection class IP20
- Lockable safety glass door
- 200° door opening angle
- 1-point locking on the front door

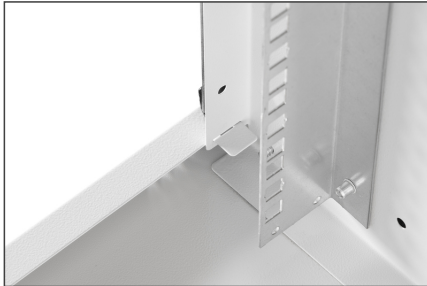
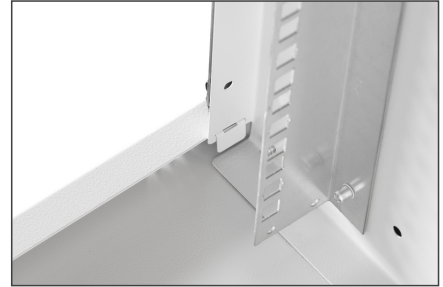
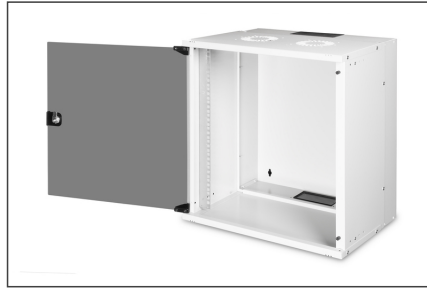
- 483 mm (19") profile rails on the front, mounted on the front inside the cabinet, galvanized
- 483 mm (19") profile rails are adjustable in depth
- 1.1 - 1.5 thick sheet steel with high load capacity, powder-coated
- Cable entry with plastic cover in roof and floor
- Ventilation slits for active and passive ventilation
- Installation depth for components max.: 327 mm
- Product dimensions (H x W x D): 460 x 540 x 400 mm
- Cabinet type: Wall mounting cabinet
- Color: light grey, RAL 7035
- Depth: 400 mm
- Front door: Glass door, single opening
- Load capacity: 60 kg
- Side panels: Both sides
- Units: 12
- Width: 540 mm
- IP protection class: IP20
- Mounted: no

#### Package contents

- Installation set (screws, captive nuts, washers)
- 2x Keys
- 1x QIG

Logistics						
	Number (pcs)	Weight (kg)	Depth (cm)	Width (cm)	Height (cm)	cm <sup>3</sup>
Packaging Unit Carton	1	13.68	60.00	58.00	15.00	52,200.00
Packaging Unit Inside	1	13.68	60.00	58.00	15.00	52,200.00
Packaging Unit Single	1	13.68	60.00	58.00	15.00	52,200.00
Net single without Packaging	1	13.48	60.00	58.00	15.00	52,200.00

More images:



**DN-43006**  
Wall Mounting Cabinet SOHO PRO  
483mm (19") - 540x400mm (WD)

**DIGITUS**

- Slide the top panel into the body of the cabinet out of the box.
- Open the top panel and slide the top panel off the body.
- Slide the bottom panel into the body in the direction of the arrows. As soon as the cabinet is closed, insert the screws of the bottom panel into the panel of the body.
- Fix the bottom panel to the body by the screws. Please be aware that the screws need to be inserted in all places as shown above. There are also 2x screws which need to be inserted in the middle. Please be aware that the screws need to be inserted in the middle of the panel.
- Use the body filter and bottom panel to fit in the backdoor. Insert the top hinge on top of the glass door into the hinge hole of the top panel.

**DN-43008**  
Wall Mounting Cabinet SOHO PRO  
483mm (19") - 540x400mm (WD)

**DIGITUS**

- Slide the top panel into the body in the direction of the arrows. The bottom panel remains in the top panel. Put it in place in the upper hole of the body. Insert the top hinge on top of the glass door into the hinge hole of the top panel.
- Insert the bottom panel into the body by the screws.
- Put the cabinet on the floor. The bottom panel remains in the top panel. Check the position of the bottom panel and the screws of the top panel.
- Close the top panel and bottom panel. Your cabinet is ready to use.