

# DIGITUS Wall Mounting Cabinet SOHO PRO - 483 mm (19") - 540x400 mm (WxD)

DN-49205  
EAN 4016032493747



**19" 9U wall mounting cabinet, SOHO PRO 460 x 540 x 400 mm, black**

Whether for private areas, office or sub-distribution units with limited space: With the compact 483 mm (19") solutions from the SOHO PRO series, you can install your network wherever you like. The wall housings available in four rack units (4 rack units, 7 rack units, 9 rack units, 12 rack units) are equipped with a full glass door as well as a cable entry in the roof and floor. A pair of galvanized 483 mm (19") profile rails labeled with easy-to-read rack units are installed on the inside. Their depth can be adjusted. Each cabinet features a robust steel design made of up to 1.5 mm thick sheet steel. Coloring is done with electrostatic powder coating in the standard colors gray (RAL 7035) or jet black (RAL 9005). The door hinges can be switched. The network are unassembled on delivery, in an optimized flat pack. Installation takes just a few steps and is extremely easy thanks to the step-by-step instructions included.

- Protection class IP20
- Lockable safety glass door
- 200° door opening angle
- 1-point locking on the front door
- 483 mm (19") profile rails on the front, mounted on the front inside the cabinet, galvanized

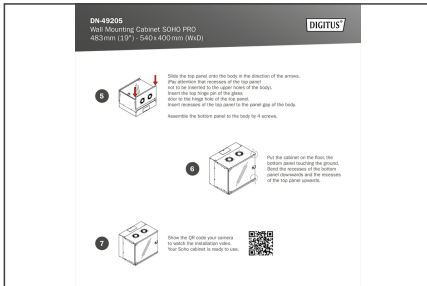
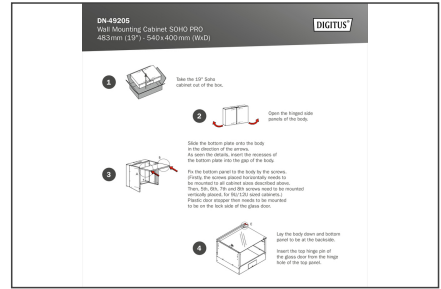
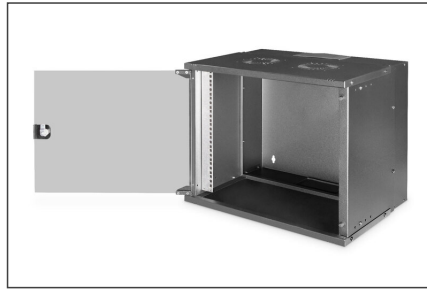
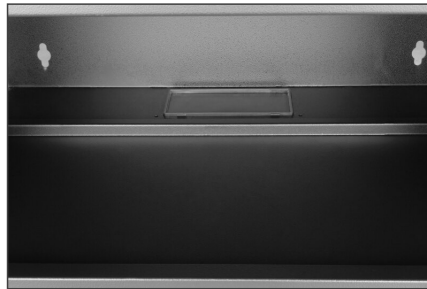
- 483 mm (19") profile rails are adjustable in depth
- 1.1 - 1.5 thick sheet steel with high load capacity, powder-coated
- Cable entry with plastic cover in roof and floor
- Ventilation slits for active and passive ventilation
- Installation depth for components max.: 327 mm
- Product dimensions (H x W x D): 460 x 540 x 400 mm
- Cabinet type: Wall mounting cabinet
- Color: black, RAL 9005
- Depth: 400 mm
- Front door: Glass door, single opening
- Load capacity: 60 kg
- Side panels: Both sides
- Units: 9
- Width: 540 mm
- IP protection class: IP20
- Mounted: no

**Package contents**

- Installation set (screws, cage nuts, washers)
- 2x key
- 1x QIG

Logistics						
	Number (pcs)	Weight (kg)	Depth (cm)	Width (cm)	Height (cm)	cm³
Packaging Unit Carton	1	11.44	58.00	47.50	17.50	48,212.50
Packaging Unit Inside	1	11.44	58.00	47.50	17.50	48,212.50
Packaging Unit Single	1	11.44	58.00	47.50	17.50	48,212.50
Net single without Packaging	1	10.54	58.00	47.50	17.50	48,212.50

More images:



**DN-48205**  
Wall Mounting Cabinet SMD PRO  
483mm (13") - 540x400mm (WxD)

1. Slide the top panel onto the body in the direction of the arrows. The arrows show the direction of the top panel and to be inserted into the upper holes of the body. Insert the top panel into the glass door in the right-hand side of the panel. Insert the screws of the top panel at the panel gap at the body.

2. For the cabinet on the floor, the cabinet must be mounted on the ground. Check the position of the cabinet panel (rearward) and the position of the top panel (down).

3. When the QR code your camera is used for installation. Your cabinet is ready to use.



**DN-49205**  
Wall Mounting Cabinet SMD PRO  
483mm (13") - 540x400mm (WxD)

1. Take the top panel out of the box.
2. Clean the top panel with a soft cloth.
3. Slide the top panel into the body in the direction of the arrows. The arrows show the direction of the top panel and to be inserted into the upper holes of the body. Insert the screws of the top panel at the panel gap at the body.
4. For the cabinet on the floor, the cabinet must be mounted on the ground. Check the position of the cabinet panel (rearward) and the position of the top panel (down).