

DIGITUS 2D Desktop USB Barcode Scanner

DA-81005
EAN 4016032490630



1D 2D Barcode Scanner Desktop

The 2D barcode scanner from DIGITUS® with high-resolution and motion-independent CMOS sensor allows fast and accurate scanning of static and non-static barcodes. Suitable for checkout areas in pharmacies, supermarkets and other retail facilities. Detects printed QR codes and QR codes displayed on screens (e.g. e-wallet). With 200 scans per sec., this bidirectional scanner delivers the best results. Suitable for one and omni-dimensional barcodes such as bar codes and QR codes. The scanner is also capable of reading QR codes from displays, ideal for scanning QR codes for mobile pay. Each scan is confirmed with visual and audible signals, supporting the most common types of encodings. Large scan angles further accelerate barcode recognition.

Omni-directional bar code scanner with a scanning performance of up to 200 scans/s and elegant design for reliable use in checkout areas of pharmacies, supermarkets and other retail facilities

- 2D & 1D scan - barcodes & QR codes from paper or displays
- Current consumption: 5V DC, 235mA
- Power supply: USB
- Scan type: Image capture
- Sensor: CMOS
- CPU: ARM 32-bit Cortex
- Trigger: Automatic
- Error rate in bits: 1/5 million, 1/20 million
- Resolution: $\geq 4\text{mil}$
- Scan width: 10 cm

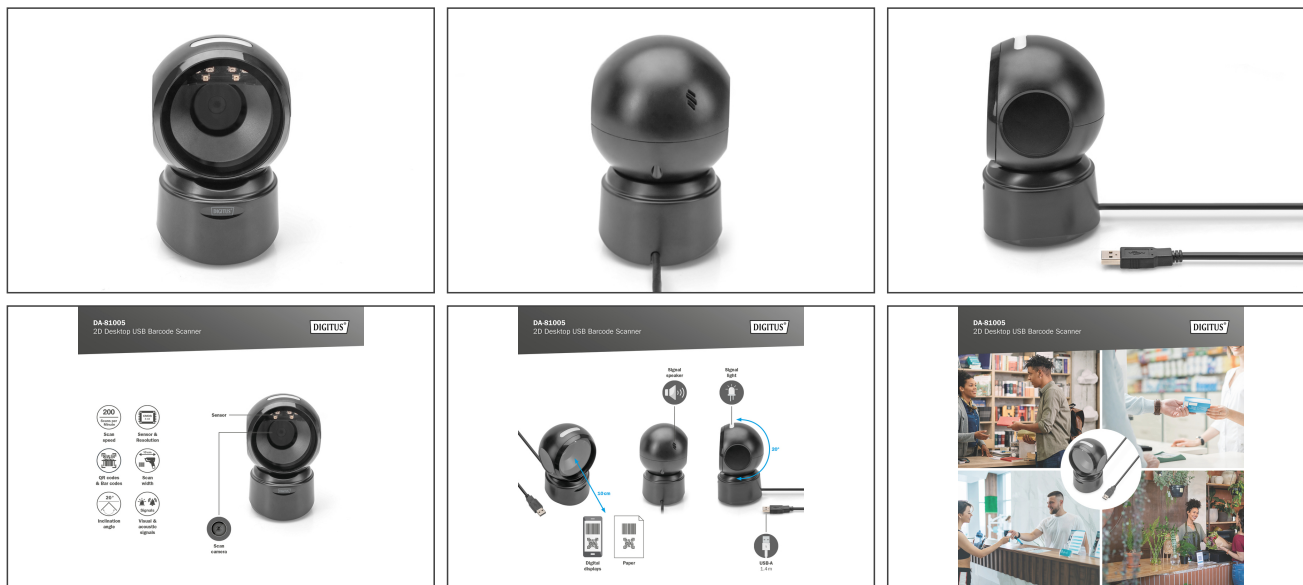
- Number of scans: 200 per second
- Depth of field: 5mil @ 2mm - 700mm, 13mil @ 2mm - 170mm; 20mil @ 5mm - 110mm
- Scan angle: rotation angle $\pm 360^\circ$, inclination angle $\pm 60^\circ$, declination angle $\pm 60^\circ$
- "Scan angle" in the context of a barcode scanner refers to the angle at which the scanner captures the barcode on a product. It describes the orientation of the barcode relative to the fixed scanner, which remains in position.
- The scan angle is crucial for the scanner to be able to read the barcode correctly, even if the product is tilted or rotated. The scanner has a flexibly adjustable tilt of up to 20 degrees.
- The scanner has a flexibly adjustable tilt of up to 20 degrees.
- Decoding: 1D: Codabar, Code 39, Code 32 Pharmaceutical (PARAF), Interleaved 2 of 5, NEC 2 of 5, Code 93, Straight, 2 of 5 Industrial, Straight 2 of 5 IATA, Matrix 2 of 5, Code 11, Code 128, GS1-128, UPC-A, UPC-E, EAN/JAN-8, EAN/JAN-13, MSI, GS1 DataBar Omnidirectional, GS1 DataBar Limited, GS1 DataBar, Expanded, China Post (Hong Kong 2 of 5), Korea Post.
- Decoding 2-D: DOT Code, Codeblock A, Codeblock F, PDF417, Micro PDF417, GS1 Composite Codes, QR Code, Data Matrix, MaxiCode, Aztec, HANXIN
- Compatible with Windows / Android / iOS / Mac / Linux
- Plug and Play - No additional drivers required

Package contents

- 1x 2D barcode scanner with USB cable 1.4m
- 1x QIG

Logistics						
	Number (pcs)	Weight (kg)	Depth (cm)	Width (cm)	Height (cm)	cm ³
Packaging Unit Carton	30	13.00	53.00	43.00	37.00	84,323.00
Packaging Unit Inside	1	0.43	0.00	0.00	0.00	0.00
Packaging Unit Single	1	0.43	10.50	12.00	17.00	2,142.00
Net single without Packaging	1	0.31	10.50	12.00	17.00	2,142.00

More images:



Safety notes

- Do NOT look directly into the LED light.
- Do not look at the light source either directly or using optical aids.
- Do NOT expose the reader to flammable substances.
- Under no circumstances should you attempt to carry out unauthorized repairs to the installed components.
- A socket outlet for the AC power supply should be available and easily accessible near the device. Ensure a stable power supply so that the reader and peripheral devices function correctly.
- Do not expose the device to rain, moisture, vapors or liquids.
- Do not insert any objects into the device.
- Do not attempt to repair the unit or open the housing without authorization. You risk an electric shock!
- Dust, moisture, vapors and strong cleaning agents or solvents can cause damage to the device.
- Disconnect the appliance from the power supply and the connected devices before cleaning.
- Clean the device with a dust-free cloth.

EU responsible person

EU based economic operator ensuring the product complies with the required regulations.

ASSMANN Electronic GmbH
Auf dem Schüffel 3
Lüdenscheid, Germany
<https://www.assmann.com>
info@assmann.com