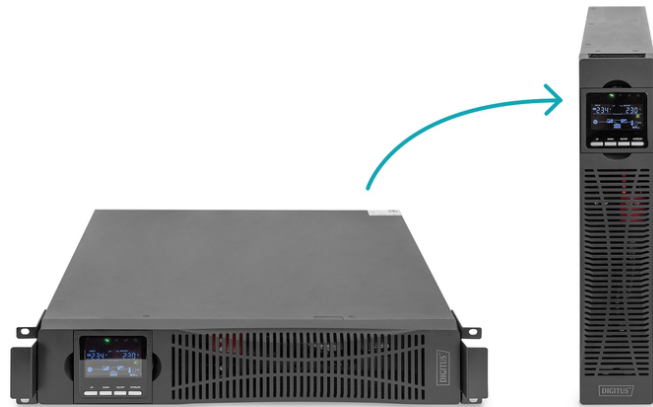


DIGITUS OnLine UPS system, 3000 VA / 3000 W

DN-170096
EAN 4016032474678



OnLine UPS Module, 3000VA/3000W

The DIGITUS® OnLine UPS is a double-conversion UPS solution that provides best-in-class power failure protection and continuous power generation in a compact and flexible system. The single-phase UPS operates with high energy efficiency and is ideal for protecting critical infrastructure in both centralized and edge network applications. Scalable runtime options with matching external battery cabinets provide additional flexibility when extended uninterruptible power is required. The user-friendly LCD display and network management capability, including configuration, make this system easy to install and maintain. With market-leading efficiency and consistent power factor, the UPS meets your critical application needs.

The OnLine UPS is an ideal backup solution for your demanding power requirements and ensures fail-safe operation in a variety of industrial applications.

- Online double conversion system (VFI-SS-111)
- Input: socket IEC60320 C20, 208/220/230/240 Vac
- Output: 8 x IEC60320 C13, max. 10A per socket; 1 x IEC60320 C19, max. 16A per socket
- System power rating: 3000 VA / 3000 W, power factor 1.0
- AC-AC (online VFI) efficiency: 93 %, ECO mode efficiency: 98 %.
- Replaceable internal battery pack during operation.
- Battery: valve-regulated, non-spillable lead-acid battery.
- Battery capacity: 6 x 12V x 9.0 Ah
- Full load run time: 3 min; half load run time: 9 min
- Charge: 4 hours to 90% capacity after fully discharged
- Network connection: Optional SNMP/Webcard (part number DN-170100) allows remote monitoring of the UPS.
- Local communication ports: USB, RS-232 (serial), SNMP card (optional), relay card (optional)
- Emergency power-off (EPO) contact for UPS shutdown in case of emergency

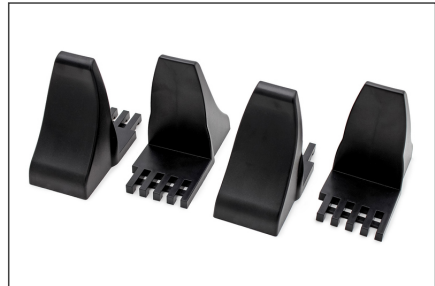
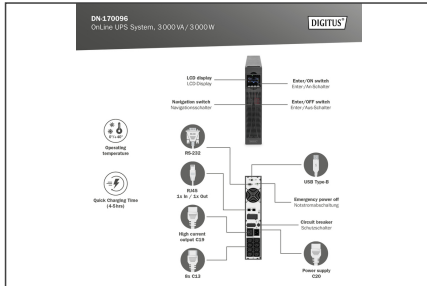
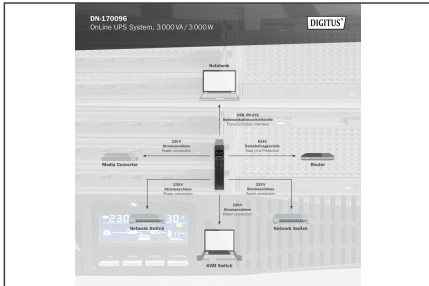
- Maximum operating temperature: 0 - 40 °C
- Storage temperature: -25 - 55 °C
- Relative humidity: 20 - 90% non-condensing
- Operating altitude: < 1500 m
- Product dimensions WxDxH (mm): 440 (19") x 600 x 86.5 (2U)
- Product weight: 26 kg
- Shipping dimensions WxDxH (mm): 560 x 730 x 200
- Shipping weight: 30.2 kg
- Safety standards: IEC/EN62040-1, IEC/EN60950-1
- EMC standards: IEC/EN62040-2, IEC61000-4-2, IEC61000-4-3, IEC61000-4-4, IEC61000-4-5, IEC61000-4-6, IEC61000-4-8
- Approval: CE declaration
- Scope of delivery: UPS unit, feet for tower installation, UPS manual, UPS QSG, UPS software license, USB cable, mains cable (1.8m protective contact socket (type 7/4) to IEC60320 socket C20), IEC C13 connection cable, 19" installation brackets
- Optional available: 19" UPS mounting kit (profile rails), part number DN-170109
- Installation: Desktop, Rack
- Plug: IEC 60320 C20 inlet
- Power: 1500VA – 3000VA
- Technology: Online double conversion
- Inch form factor (IEC 60297): 482.6 mm (19")

Package contents

- 1 x OnLine UPS system, 3000 VA / 3000 W
- 1 x UPS user manual
- 1 x UPS Quick Start Guide
- 1 x USB cable
- 1 x input power cable 1.80 m (Schuko plug CEE 7/7 - IEC 60320 C19)
- 1 x output mains cable 1.50 m (IEC60320 C13 - Sheet E)
- 1 x IEC 60320 Sheet I (16A) plug

Logistics						
	Number (pcs)	Weight (kg)	Depth (cm)	Width (cm)	Height (cm)	cm ³
Packaging Unit Carton	1	30.10	73.20	55.50	20.20	82,064.50
Packaging Unit Inside	1	30.10	73.20	55.50	20.20	82,064.50
Packaging Unit Single	1	30.10	73.20	55.50	20.20	82,064.50
Net single without Packaging	1	28.82	73.20	55.50	20.20	82,064.50

More images:



Safety notes

- The UPS system must be absolutely dry before it is installed. Please allow the UPS system to acclimatize for at least two hours to adapt to the environment.
- Protect the UPS system from water or moisture.
- Avoid direct sunlight or installation near heat sources.
- Do not block any ventilation openings in the housing.
- Do not connect any devices or appliances that would overload the system.
- Lay cables so that nobody can step on them or trip over them.
- Do not connect any household appliances to the output sockets of the UPS system.
- Only connect the UPS system to an earthed and easily accessible socket.
- Only use VDE-tested, CE-marked mains connection cables at the input and outputs.
- Never disconnect the mains connection cable during operation as this would cancel the protective earthing of the UPS system and all connected loads.
- The UPS system has its own internal power source. The output sockets or output terminals of the UPS system can be energized even if the UPS system is not connected to the building cabling.
- To switch off the UPS system completely, first press the OFF/Enter button to disconnect the mains.
- Caution - Risk of electric shock. Even after disconnecting the device from the mains, the components inside the UPS system are still connected to the battery. There is a risk of electric shock.
- Only persons who are sufficiently familiar with batteries and the necessary safety precautions may replace batteries and monitor operation.
- Caution - Risk of electric shock. The battery circuit is not isolated from the input voltage. Dangerous voltages can occur between the battery terminals and the ground. Ensure that no voltage is present before touching!
- When replacing the batteries, install the same number and type of batteries.
- Do not open or destroy batteries. Leaking electrolyte can injure the skin and eyes and may be toxic.
- The appliance may only be opened and repaired by a trained specialist.

EU responsible person

EU based economic operator ensuring the product complies with the required regulations.

ASSMANN Electronic GmbH
 Auf dem Schüffel 3
 Lüdenscheid, Germany
<https://www.assmann.com>
info@assmann.com