

# DIGITUS 4K HDMI Video Wall Controller, 2x2

DS-43309  
EAN 4016032467595



### HDMI 2x2 Video Wall Processor Support 4K@60Hz (4:4:4)

With the DIGITUS® Video Wall Controller 2x2, you can transform a total of 4 TV sets or monitors with HDMI into a large-format video wall. The controller enables you to distribute a high-resolution 4K signal across 4 Full HD displays to create a large image. You can be as creative as you like: set up a classic 2x2 monitor wall or arrange 2 to 4 monitors horizontally or vertically, combining them to make a video wall. By pressing a button on the device or the remote control included in delivery, you can switch between the different modes. The device also contains a splitter function that allows you to display the same image on all the monitors. With this professional tool, you are ideally equipped to display visualizations of all kinds for trade fairs, advertising or shop windows with a high degree of flexibility.

### Combine four interconnected Full HD displays (HDMI) into a video wall - various display formations possible

- Resolution HDMI Input: 1 x 4K / 60 Hz (3840 x 2160p / YUV 4:4:4)
- Resolution HDMI Outputs: 4 x Full HD / 60 Hz (1920 x 1080p)
- Total bandwidth HDMI: 18 Gbps (all channels)
- Additional input resolutions supported: 480i, 480p, 576p, 576i, 720p, 1080i, 1080p(50/60Hz), 4K@24/25/30Hz, 4k@50/60Hz

- Supports display formations: 2x2, 1x2, 2x1, 1x3, 3x1, 1x4, 4x1 (vertical x horizontal)
- Supports display splitter mode: 1x4
- Operating temperature: 0°C ~ 70°C
- Operating humidity: 5% - 90% RH (non-condensing)
- Power supply power adapter: 100 - 240 V AC / 0.65 A
- Power supply device: 12 V / 2 A
- Length of mains cable: ca. 1.2 m
- Case material: Metal
- Dimensions: W 11.5 x D 11.1 x H 2.7 cm
- Weight: 395 g
- Color: Black

### Attributes

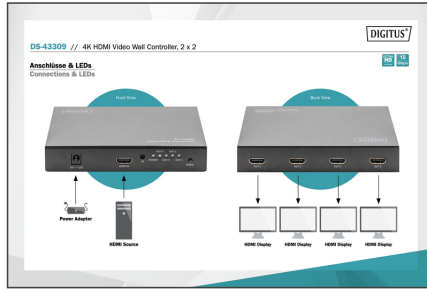
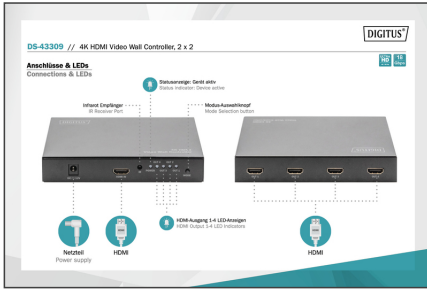
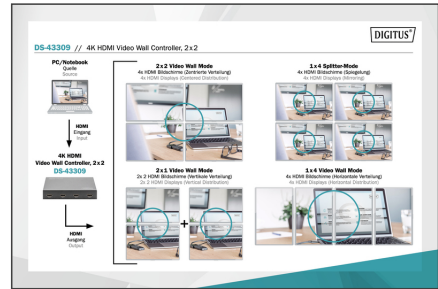
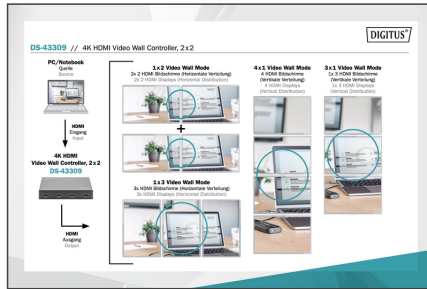
- HDTV Resolution max.: 3840 x 2160 Pixel, 60Hz
- KVM: no
- PoE (Power over Ethernet): no
- Video connection ports: HDMI

### Package contents

- 1 x 4K HDMI Video Wall Controller, 2 x 2
- 1 x Power adapter
- 1 x Remote control
- 1 x User manual

Logistics						
	Number (pcs)	Weight (kg)	Depth (cm)	Width (cm)	Height (cm)	cm³
Packaging Unit Carton	20	14.70	62.00	51.00	23.00	72,726.00
Packaging Unit Inside	1	0.74	0.00	0.00	0.00	0.00
Packaging Unit Single	1	0.74	24.30	19.60	6.00	2,857.68
Net single without Packaging	1	0.52	24.30	19.60	6.00	2,857.68

More images:



Safety notes

- If the device is powered by a plug-in power supply, ensure that the power adapter is connected correctly and meets the specified requirements (e.g. voltage and current).
- Only use certified CAT5e or CAT6 cables to ensure stable signal transmission.
- For particularly long cable runs or in environments prone to interference, it is recommended to use shielded network cables.
- Make sure that all connections are tight and secure to avoid loose contacts that could affect the signal quality. Make sure that the HDMI and Ethernet connections are properly connected.
- Make sure that the CAT cable is not laid close to high-voltage lines or other strong sources of electromagnetic interference in order to avoid signal interference.
- Only operate the device within the specified temperature range.
- Do not use the device outdoors or in damp or wet environments
- Check all connections and cables regularly for wear or damage. Cables and connections can wear out, especially with frequent use or long installations, which can lead to poor signal quality or system failure.

EU responsible person

EU based economic operator ensuring the product complies with the required regulations.

ASSMANN Electronic GmbH  
 Auf dem Schüffel 3  
 Lüdenscheid, Germany  
<https://www.assmann.com>  
 info@assmann.com