

# DIGITUS Slim CAT 6 U/UTP slim patch cord

DK-1617-020S  
EAN 4016032459972



## CAT 6 U-UTP slim patch cord, Cu, LSZH AWG 28/7, length 2 m, color Grau

DIGITUS® slim patch cords are characterised by their small outer diameter and flexible sheath. Slim design enables versatile use in your network. Moreover, DIGITUS® slim patch cords are manufactured according to ISO/IEC 11801 and DIN EN 50173 CAT 6 standards. They guarantee that the cable installation complies with the ISO & EN channel specification and provide excellent performance in DIGITUS® CAT 6 cabling. Performance was tested up to 250 MHz, including performance characteristics such as near-end crosstalk ("NEXT"). DIGITUS® patch cords were specifically designed to fully meet all requirements in various application areas. Each cable is equipped with a moulded anti-kink sleeve with strain relief. In addition, the sleeve has a locking lever protection, which prevents kinking of the cables and breaking-off of the locking lever from the connector. Category 6 is simply identified by the red coloured connectors.

### Enables flexible and space-saving cabling in your network.

- 2x RJ45 connectors (8P8C)
- Covers with kink protection, strain relief and locking lever protection
- Length indication on hoods
- Inner conductors: Copper (Cu)
- Halogen free: yes
- Pin Assignment: 1:1
- Category: 6

- AWG cross-section: 28
- Anti-kink sleeve: moulded
- Connector 1 type: RJ45 8(8)
- Connector 2 type: RJ45 8(8)
- Cable design: 4x2
- Flame retardant version: yes
- Anti-kink sleeve colour: Grey
- Locking lever protection: yes
- NVP value: 69
- Oil resistant to EN 60811-404: no
- Bending radius: 4D (outer diameter x 4)
- Sheath colour: Grey
- Length: 2 m

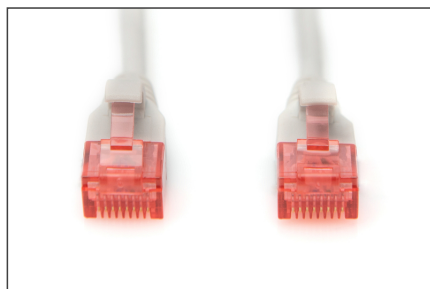
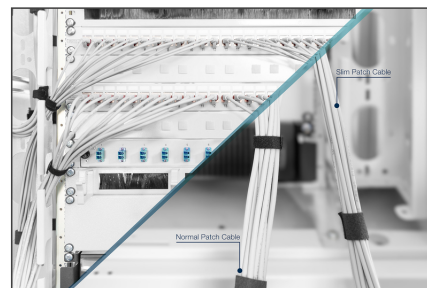
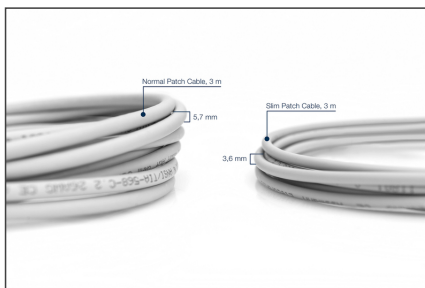
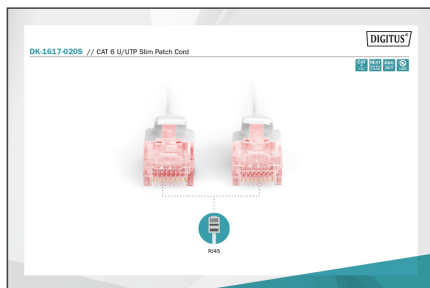
### Attributes

- Configuration: 1:1
- Category: CAT 6
- Shielding: U-UTP, unshielded
- Length: 2 m
- Color: grey
- Jacket: LSOH
- Slim Version: yes
- Structure: 4 x 2 AWG 28/7, twisted pair
- Flat Version: no

### Package contents

- Slim CAT 6 U/UTP patch cord, LSZH

Logistics						
	Number (pcs)	Weight (kg)	Depth (cm)	Width (cm)	Height (cm)	cm³
Packaging Unit Carton	200	8.60	32.00	50.00	21.00	33,600.00
Packaging Unit Inside	1	0.04	25.00	17.00	0.80	340.00
Packaging Unit Single	1	0.04	25.00	17.00	0.80	340.00
Net single without Packaging	1	0.04	25.00	17.00	0.80	340.00

**More images:****Safety notes**

- When plugging and unplugging the cable, only grasp the plug and do not pull directly on the cable.
- Cables must not be kinked sharply or bent at tight angles, as this can damage the inner wires and lead to failures.
- Ensure that the cables are not under tensile load, as this can damage the insulation and the wires inside the cable.
- Ensure that cables are not laid in areas where they can be easily damaged mechanically.
- Cables should not be used in environments with extremely high or very low temperatures. Observe the product information on the maximum operating temperature of the cable
- Check cables regularly for visible damage such as cracks, kinks or signs of wear. Defective cables should be replaced immediately to avoid failures, short circuits or even electric shocks.

**EU responsible person**

EU based economic operator ensuring the product complies with the required regulations.

ASSMANN Electronic GmbH  
Auf dem Schöffel 3  
Lüdenscheid, Germany  
<https://www.assmann.com>  
[info@assmann.com](mailto:info@assmann.com)