

DIGITUS HDMI Premium High Speed with Ethernet Connection Cable

DB-330123-010-S
EAN 4016032446637



HDMI Premium High Speed Connection Cable, Type A M/M, 1.0m, w/Ethernet, Ultra HD, 4K@60Hz, gold, bl

This HD and 3D suitable cable used for connection of audio/video devices, such as Blu-ray player, game pads or consoles, etc., for example, with a TV, monitor or computer. Also capable for use of any IP-based application.

4K/Ultra HD and HDR capable + Ethernet connectivity

- Support of HDMI 2.0 Features
- Supports Ultra HD (60Hz), 4096 x 2160p resolution
- Support 4K 3D
- Support of High Dynamic Range (HDR)
- Support Audio Return Channel (ARC)
- Support Consumer Electronic Control (CEC)
- Support Lip-Sync (audio/video synchronisation)
- Dolby TrueHD capable

- Multi Stream audio/video support
- 21:9 Cinemascope support
- 32 Channel Audio support
- With Ethernet Channel (HEC)

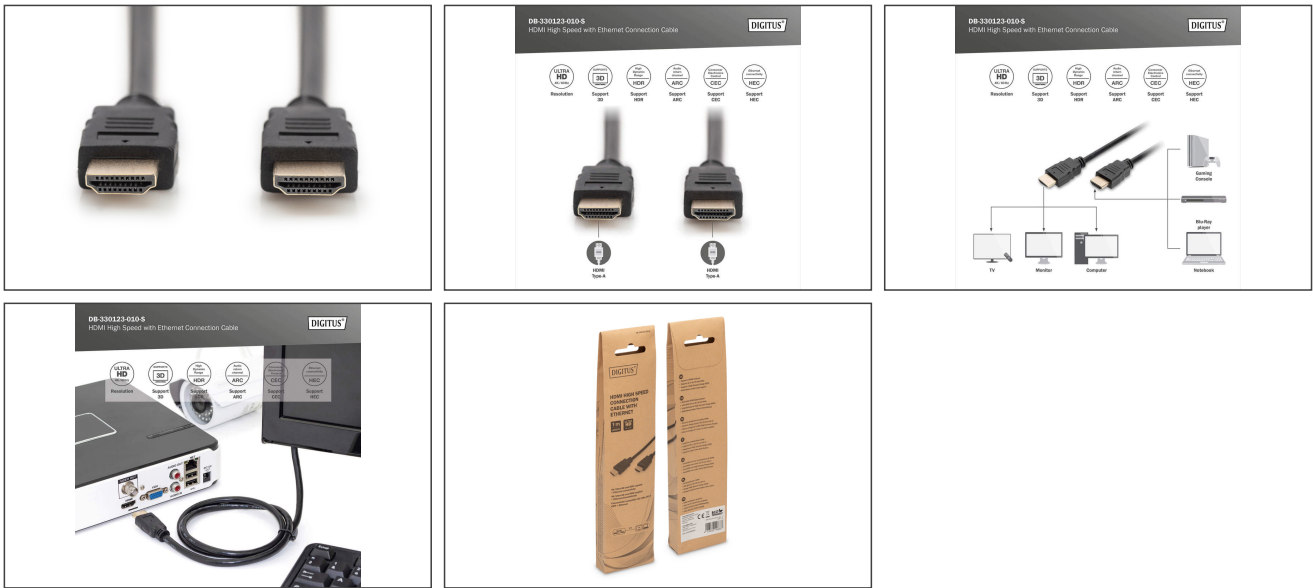
Attributes

- Color cable: black
- Connector 1: HDMI type A, plug
- Connector 2: HDMI type A, plug
- Connector surface: gold-plated
- HDMI Standard: Premium High Speed HDMI with Ethernet
- HDTV Resolution max.: 3840 x 2160 Pixel, 60Hz
- HDTV Standard: Ultra HD 4K
- Length: 1 m
- AOC - Active Optical Cable: no

Logistics						
	Number (pcs)	Weight (kg)	Depth (cm)	Width (cm)	Height (cm)	cm ³
Packaging Unit Carton	100	25.00	34.00	26.00	44.00	38,896.00
Packaging Unit Inside	50	12.50	16.00	24.00	42.00	16,128.00
Packaging Unit Single	1	0.25	2.00	5.50	23.00	253.00
Net single without Packaging	1	0.22	2.00	5.50	23.00	253.00

More images:





Safety notes

- When plugging and unplugging the cable, only grasp the plug and do not pull directly on the cable.
- Cables must not be kinked sharply or bent at tight angles, as this can damage the inner wires and lead to failures.
- Make sure that the cables are not under tensile load, as this can damage the insulation and the wires inside the cable.
- Ensure that cables are not laid in areas where they can be easily damaged mechanically.
- Cables should not be used in environments with extremely high or very low temperatures. Observe the product information on the maximum operating temperature of the cable
- Check cables regularly for visible damage such as cracks, kinks or signs of wear. Defective cables should be replaced immediately to avoid failures, short circuits or even electric shocks.

EU responsible person

EU based economic operator ensuring the product complies with the required regulations.

ASSMANN Electronic GmbH
 Auf dem Schüffel 3
 Lüdenscheid, Germany
<https://www.assmann.com>
info@assmann.com