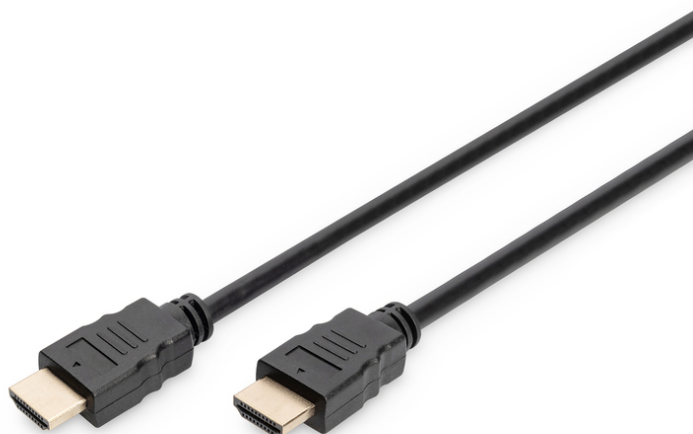


# DIGITUS HDMI High Speed with Ethernet Connection Cable

DB-330123-020-S  
EAN 4016032446620



**HDMI Premium High Speed Connection Cable, Type A M/M, 2.0m, w/Ethernet, Ultra HD, 4K@60Hz, gold, bl**

This HD and 3D suitable cable used for connection of audio/video devices, such as Blu-ray player, game pads or consoles, etc., for example, with a TV, monitor or computer. Also capable for use of any IP-based application.

**4K/Ultra HD and 3D capable + Ethernet connectivity**

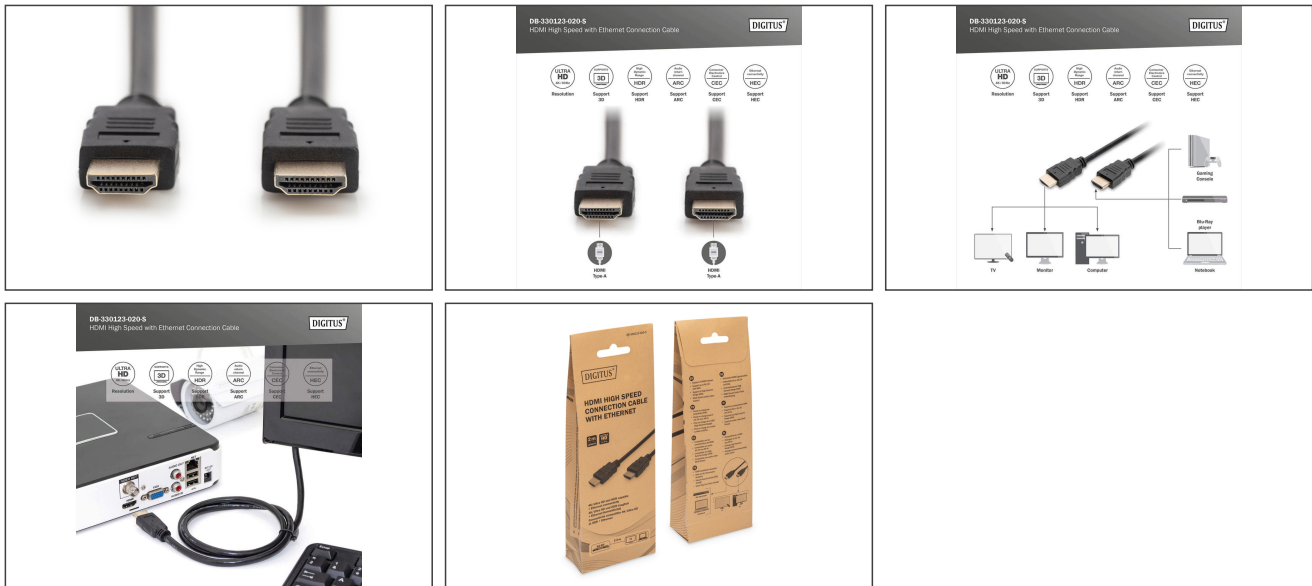
- Support of HDMI 2.0 Features
- Supports Ultra HD (60Hz), 4096 x 2160p resolution
- Support 4K 3D
- Support of High Dynamic Range (HDR)
- Support Audio Return Channel (ARC)
- Support Consumer Electronic Control (CEC)
- Support Lip-Sync (audio/video synchronisation)

- Dolby TrueHD capable
- Multi Stream audio/video support
- 21:9 Cinemascope support
- 32 Channel Audio support
- With Ethernet Channel (HEC)
- Color cable: black
- Connector 1: HDMI type A, plug
- Connector 2: HDMI type A, plug
- Connector surface: gold-plated
- HDMI Standard: Premium High Speed HDMI with Ethernet
- HDTV Resolution max.: 3840 x 2160 Pixel, 60Hz
- HDTV Standard: Ultra HD 4K
- Length: 2 m
- AOC - Active Optical Cable: no

Logistics						
	Number (pcs)	Weight (kg)	Depth (cm)	Width (cm)	Height (cm)	cm <sup>3</sup>
Packaging Unit Carton	40	10.00	46.00	30.00	25.00	34,500.00
Packaging Unit Inside	10	2.50	35.60	55.90	12.50	24,875.50
Packaging Unit Single	1	0.25	18.70	29.90	2.50	1,397.82
Net single without Packaging	1	0.20	18.70	29.90	2.50	1,397.82

**More images:**





**Safety notes**

- When plugging and unplugging the cable, only grasp the plug and do not pull directly on the cable.
- Cables must not be kinked sharply or bent at tight angles, as this can damage the inner wires and lead to failures.
- Make sure that the cables are not under tensile load, as this can damage the insulation and the wires inside the cable.
- Ensure that cables are not laid in areas where they can be easily damaged mechanically.
- Cables should not be used in environments with extremely high or very low temperatures. Observe the product information on the maximum operating temperature of the cable
- Check cables regularly for visible damage such as cracks, kinks or signs of wear. Defective cables should be replaced immediately to avoid failures, short circuits or even electric shocks.

**EU responsible person**

EU based economic operator ensuring the product complies with the required regulations.

ASSMANN Electronic GmbH  
 Auf dem Schüffel 3  
 Lüdenscheid, Germany  
<https://www.assmann.com>  
[info@assmann.com](mailto:info@assmann.com)