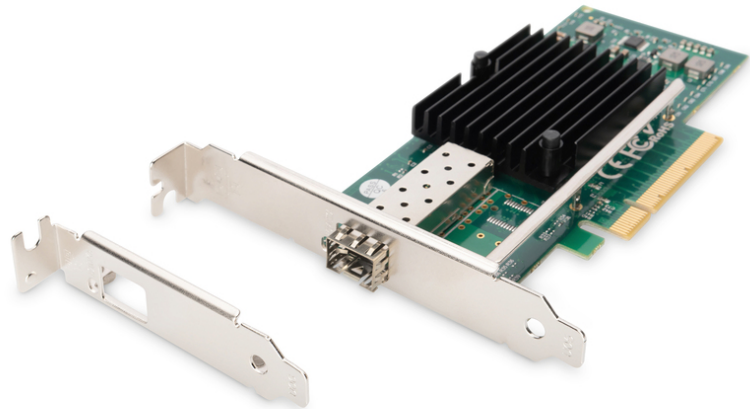


# DIGITUS Single Port 10G SFP PCIe Network Card

**DN-10161**  
**EAN 4016032445180**



**SFP+ 10G PCI Express Card Low profile bracket, Intel JL82599EN chipset**

With this 10-Gigabit Fiber Optic network card you have a cost efficient solution for connecting your workstation to your network using the SFP+ Transceiver of your choice. Due to the Intel chipset you have a reliable solution offering you features like up to 15.5K jumbo frames, IP, TCP and UDP checksum offloading (IPv4, IPv6) capabilities.

**Connect your workstation directly to your 10G fiber optic network**

- Compatible with x8 and x16 PCIe slots
- Supports 802.1Q VLAN tagging
- Up to 15.5K Jumbo Frames

- Supports 10G SFP+ optical and direct attached copper modules
- PCI Express specification revision 2.0
- IEEE 802.1Q Tagged VLAN
- Supports Win 7, 8.1, 10, Server 2008 R2, 2012, 2012 R2, Linux 2.6.x and later
- Chipset: Intel JL82599EN

**Package contents**

- Network Card
- Low profile bracket
- User manual
- Driver CD

Logistics						
	Number (pcs)	Weight (kg)	Depth (cm)	Width (cm)	Height (cm)	cm <sup>3</sup>
Packaging Unit Carton	20	4.20	23.50	30.00	36.00	25,380.00
Packaging Unit Inside	1	0.21	21.00	14.50	3.30	1,004.85
Packaging Unit Single	1	0.21	21.00	14.50	3.30	1,004.85
Net single without Packaging	1	0.15	21.00	14.50	3.30	1,004.85

**More images:**

