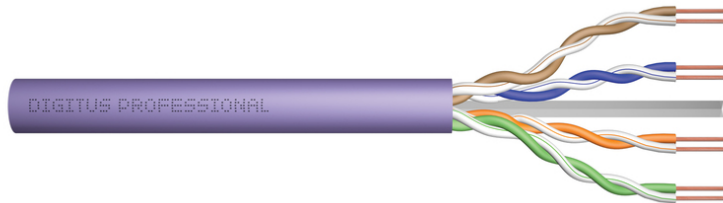


# DIGITUS Cat.6 U/UTP installation cable, 100 m, simplex, Dca-s2,d2,a1

DK-1614-VH-1  
EAN 4016032442134



### CAT 6 U-UTP installation cable, 250 MHz Dca (EN 50575), AWG 23/1, 100 m paper box,

The Digitus Cat 6 U/UTP installation cable is designed for use in the structured data center and the building cabling according to ISO/IEC 11801, DIN EN 50288-6-1, DIN EN 50173, IEC 60332-1. The cable is perfectly suitable for the transmission of both analog and digital data and also supports POE and POE+.

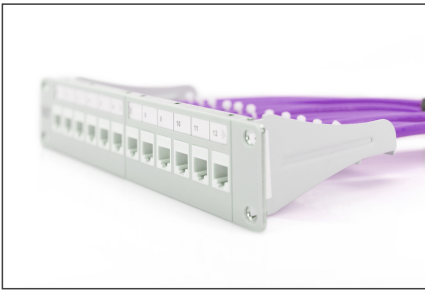
#### Future-oriented standards and high-end quality for your network.

- Physical properties:
- Conductor: Bare annealed copper, solid AWG 23/1
- System/s of AVCP: AVCP 3
- Insulation: HD-PE (High Density Polyethylene)
- Total number of insulated conductors: 8, twisted in 4 pairs
- Color code: Blue-white, orange-white, green-white, brown-white
- Individual pair shield: None
- Overall shielding: None
- Outer sheath: Eca to B2ca acc. to EN 50575; LSZH
- Outer sheath diameter (nominal): 0,5 mm (Eca); 0,6 mm (Dca); 1,0 mm (Cca); 1,0 mm (B2ca)
- Outer sheath color: Purple (RAL 4005)
- Mechanical properties:
- Tensile loading: 150N max.
- Dynamic bending radius: 8x AD mm min.
- Static bending radius: 4x AD mm min.
- Shipping- and storage temperature range: -20 °C up to +60 °C

- Operating temperature range: -20 °C up to +75 °C
- Installation temperature range: 0 °C up to +50 °C
- Overall diameter Simplex (nominal): 6,1 mm (Eca); 6,3 mm (Dca); 6,8 mm (Cca); 6,8 mm (B2ca)
- Weight (kg/km): 41 kg (Eca); 42 kg (Dca); 44 kg (Cca); 44 kg (B2ca)
- Electrical properties:
- Impedance: 100±5Ohm @ 1 - 250MHz
- Capacitance: 40 pF/m nominal @ 800 Hz
- Capacitance unbalance (pair-ground): 1.5 pF/m max. @ 1 KHz
- Insulation resistance: 5 GOhm x km min.
- DC loop resistance: 147 Ohm/km max. (2% max. resistance unbalance)
- Voltage resistance: 72 Vdc max.
- Coupling attenuation: CA-Type 3
- Signal propagation delay: 535 nS/100 m max.
- Propagation delay: 20 nS/100 m max.
- Separating class: „b“ gem. EN 50174-2
- NVP: 69%
- Assortment: Twisted Pair Installation Cables
- Category: CAT 6
- Shielding: U-UTP, unshielded
- CPR: Dca
- Length: 100 m
- Color: violet
- Jacket: LSOH
- Structure: 4 x 2 AWG 23/1, solid twisted pair

Logistics						
	Number (pcs)	Weight (kg)	Depth (cm)	Width (cm)	Height (cm)	cm <sup>3</sup>
Packaging Unit Carton	1	0.00	0.00	0.00	0.00	0.00
Packaging Unit Inside	1	0.00	0.00	0.00	0.00	0.00
Packaging Unit Single	1	0.00	0.00	0.00	0.00	0.00
Net single without Packaging	1	-0.30	0.00	0.00	0.00	0.00

More images:



DIGITUS

- AWG 23/1
- 250 MHz
- 1 Gbit Ethernet
- CAT 6
- 207° ± 7.5°
- LSZH
- D<sub>ca</sub> CPR class

CAT 6 U/UTP Installation Cable, 305 m, Simplex, D<sub>ca</sub>

DIGITUS

DK-1614-VH-305 // CAT 6 U/UTP Installation Cable, 305m, Simplex, D<sub>ca</sub>

Anwendungsbereich  
Example of use

DIGITUS

DK-1614-VH-305 // CAT 6 U/UTP Installation Cable, 305m, Simplex, D<sub>ca</sub>

Kabelschicht  
Cable cross section

DIGITUS

Produktdaten Product Information	Physikalische Spezifikationen Physical Properties
<b>Bestellnummer</b> DK-1614-VH-305 <b>Artikelnummer</b> DK-1614-VH-305 <b>Part Number</b> DK-1614-VH-305	<b>Typ</b> CAT 6 <b>Leitung</b> Simplex <b>Leitungsdauer</b> 305m
<b>Name Netz</b> CAT 6 U/UTP (10/100/1000 Base-T)	<b>Abschirmung</b> Unshielded <b>Leitungsdauer</b> 305m
<b>Hersteller</b> DIGITUS	<b>Leitungsdauer</b> 305m
<b>Leitungsdauer</b> 305m	<b>Leitungsdauer</b> 305m
<b>Leitungsdauer</b> 305m	<b>Leitungsdauer</b> 305m

DIGITUS

Leistungseigenschaften Transmission Properties

AWG	AWG	AWG	AWG	AWG	AWG	AWG	AWG	AWG	AWG
24	22	20	18	16	14	12	10	8	6
100	150	200	250	300	350	400	450	500	550

intertek

**Compliance Statement**  
EMC/EN & ANSITIA  
Four Connector Channel  
Antennenschleife (Antenna Loop) mit drei Schichten (with three layers)

3P PARTY APPROVED

DIGITUS

**Certificate**  
No. 157474-13-14

**Zertifikat**  
No. 157474-13-14

Class E

Klasse E

DIGITUS

DIGITUS

CPR-Bestimmungen  
Leistungseigenschaften  
Ausgaben zur Verfügung stellen  
Zusammenfassung

B2 <sub>ca</sub>	Selbst lösche Strukturge	1+	• Typenprüfung • Konformitätsbewertung • Konformitätsbewertung	s
C <sub>ca</sub>	Hocho	3	• Typenprüfung • Konformitätsbewertung	d
D <sub>ca</sub>	Mittel	3	• Typenprüfung • Konformitätsbewertung	a
E <sub>ca</sub>	Entzünd	3	• Typenprüfung • Konformitätsbewertung	a



Safety notes

- Data cables must not be bent, stretched or twisted excessively. Sharp bends can damage the cable sheath and lead to failures or short circuits.
- Installation only by trained specialists.
- Installation only in dry rooms.
- The data cable must not be in direct contact with other electrical cables or high-voltage sources in order to avoid electromagnetic interference.

**EU responsible person**

EU based economic operator ensuring the product complies with the required regulations.

ASSMANN Electronic GmbH  
Auf dem Schüffel 3  
Lüdenscheid, Germany  
<https://www.assmann.com>  
[info@assmann.com](mailto:info@assmann.com)