

DIGITUS Cat.6A U/UTP installation cable, 500 m, simplex, Dca

DK-1614-A-VH-5
EAN 4016032441885



CAT 6A U-UTP installation cable, 500 MHz Dca (EN 50575), AWG 23/1, 500 m drum, sx, blue

DIGITUS® Category 6A U-UTP installation cables are manufactured and tested to the ISO/IEC 11801, TIA/586-C.2 and EN 50173 Category 6A specifications. Every cord consists of 8 color coded AWG 23 polyethylene insulated conductors. The conductors are twisted together to form 4 pairs with varying lay lengths. Printing details along the outer sheath includes the brand name and item code. The cable is packed in a paper pullout box which makes the installation easy.

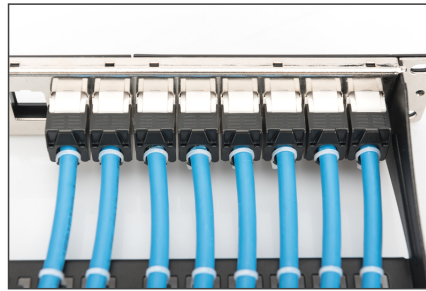
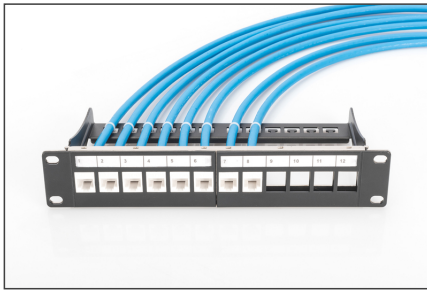
Future-oriented standards and high-end quality for your network.

- Physical properties:
- Conductor: Bare annealed copper, olid AWG 23/1
- Insulation: HD-PE (High Density Polyethylene)
- Total number of insulated conductors: 8, twisted in 4 pairs
- Color code: Blue-white, orange-white, green-white, brown-white
- Individual pair shield: None
- Overall shielding: None
- Outer sheath: Dca to B2ca acc. to EN 50575; LSZH
- Outer sheath diameter (nominal): 0,5 mm (Eca); 0,6 mm (Dca); 1,2 mm (Cca); 1,4 mm (B2ca)
- Outer sheath color: Light blue (RAL 5012)
- Mechanical properties:
- Tensile loading: 150N max.
- Dynamic bending radius: 8x AD mm min.
- Static bending radius: 4x AD mm min.

- Shipping- and storage temperature range: -20 °C up to +60 °C
- Operating temperature range: -20 °C up to +75 °C
- Installation temperature range: 0 °C up to +50 °C
- Overall diameter Simplex (nominal): 7,1 mm (Eca); 7,3 mm (Dca); 7,4 mm (Cca); 7,6 mm (B2ca)
- Weight (kg/km): 53 kg (Eca); 54 kg (Dca); 55 kg (Cca); 56 kg (B2ca)
- Electrical properties:
- Impedance: 100±50hm @ 1 - 600MHz
- Capacitance: 40 pF/m nominal @ 1 KHz
- Capacitance unbalance (pair-ground): 1.6 pF/m max. @ 1 KHz
- Insulation resistance: 5 GOhm x km min.
- DC loop resistance: 147 Ohm/km max. (2% max. resistance unbalance)
- Voltage resistance: 72 Vdc max.
- Coupling attenuation: CA-Type 2
- Signal propagation delay: 450 nS/100 m max.
- Propagation delay: 10 nS/100 m max.
- Separating class: "c" acc. to EN 50174-2
- NVP: 70%
- Category: CAT 6A
- Shielding: U-UTP, unshielded
- CPR: Dca
- Length: 500 m
- Color: light-blue
- Jacket: LSOH
- Structure: 4 x 2 AWG 23/1, solid twisted pair

Logistics						
	Number (pcs)	Weight (kg)	Depth (cm)	Width (cm)	Height (cm)	cm³
Packaging Unit Carton	1	27.50	50.00	50.00	22.00	55,000.00
Packaging Unit Inside	1	27.50	50.00	50.00	22.00	55,000.00
Packaging Unit Single	1	27.50	50.00	50.00	22.00	55,000.00
Net single without Packaging	1	27.34	50.00	50.00	22.00	55,000.00

More images:



DIGITUS

AWG 23/1 500 Meter 10 Cat.1 Ethernet CAT 6

200V/1.75A 6 LSZH Dca CPR class

CAT 6 A U/UTP Installation Cable, 500 m, Simplex, D_{ca}

DIGITUS

DK-1614-A-VHS // CAT 6, U/UTP Installation Cable, 500m, Simplex, D_{ca}

Anwendungsbeispiel
Example of use

DK-9515 6 DK-9516

DIGITUS

DK-1614-A-VHS // CAT 6, U/UTP Installation Cable, 500m, Simplex, D_{ca}

Kabelquerschnitt
Cable cross section

Aufbauweise
Cable jacket

Cu-Drht
Copper

Aufbauweise
Shield jacket

DIGITUS

Produktdaten Product Information		Physikalische Spezifikationen Physical Properties	
Artikelnummer Article Number	DK-1614-A-VHS	Leiter Conductor	25x0,50mm² (25x20AWG)
Hersteller Manufacturer	ASSMANN Electronic GmbH, 39104 Salzgitter	Isoliertes Isolating	2x0,25mm² (2x20AWG)
Norm Name	ISO/IEC 60321-321-32 (IEC 60321-321-32:2015)	Isoliertes Isolating	2x0,25mm² (2x20AWG)
Material Material	PE (Polyethylen)	Isoliertes Isolating	2x0,25mm² (2x20AWG)
Strombelastbarkeit Current Capacity	10 A	Isoliertes Isolating	2x0,25mm² (2x20AWG)
Spannung Voltage	250 V	Isoliertes Isolating	2x0,25mm² (2x20AWG)
Widerstand Resistance	120 Ohm	Isoliertes Isolating	2x0,25mm² (2x20AWG)
Induktivität Inductance	100 nH	Isoliertes Isolating	2x0,25mm² (2x20AWG)
Kapazität Capacitance	100 pF	Isoliertes Isolating	2x0,25mm² (2x20AWG)
Temperatur Temperature	-40 °C bis +105 °C	Isoliertes Isolating	2x0,25mm² (2x20AWG)
Brandklasse Fire Class	IEC 60332-1-2, IEC 60332-3-21	Isoliertes Isolating	2x0,25mm² (2x20AWG)
CE-Markierung CE Marking	CE	Isoliertes Isolating	2x0,25mm² (2x20AWG)
RoHS-Konformität RoHS Compliance	RoHS-Konform	Isoliertes Isolating	2x0,25mm² (2x20AWG)
REACH-Konformität REACH Compliance	REACH-Konform	Isoliertes Isolating	2x0,25mm² (2x20AWG)
WEEE-Konformität WEEE Compliance	WEEE-Konform	Isoliertes Isolating	2x0,25mm² (2x20AWG)

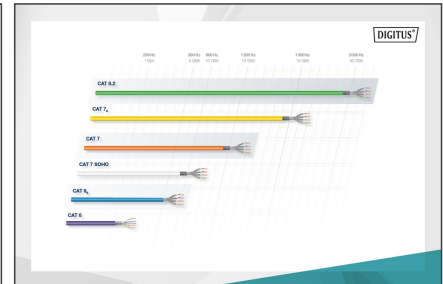
DIGITUS

Leitungsgruppen Transmission Properties									
AWG	AWG	AWG	AWG	AWG	AWG	AWG	AWG	AWG	AWG
18	18	20	22	24	26	28	30	32	34
18	18	20	22	24	26	28	30	32	34
18	18	20	22	24	26	28	30	32	34
18	18	20	22	24	26	28	30	32	34
18	18	20	22	24	26	28	30	32	34

Compliance Statement No. 2020-536

intertek

RoHS Verified Certificate of Conformity Number: 2000042027-002



DIGITUS

CEP-Code	Bezeichnung	Leitungsgruppen (AWG)	Art der Isolierung	Zusammenfassung
B2ca	Starbuck	1+	• Spinnung • Spinnung	• Spinnung • Spinnung
Cca	High	3	• Spinnung • Spinnung	• Spinnung • Spinnung
Dca	Medium	3	• Spinnung • Spinnung	• Spinnung • Spinnung
Eca	Low	3	• Spinnung • Spinnung	• Spinnung • Spinnung
Cca	s1a	d1	a1	



Safety notes

- Data cables must not be bent, stretched or twisted excessively. Sharp bends can damage the cable sheath and lead to failures or short circuits.
- Installation only by trained specialists.
- Installation only in dry rooms.
- The data cable must not be in direct contact with other electrical cables or high-voltage sources in order to avoid electromagnetic interference.

EU responsible person

EU based economic operator ensuring the product complies with the required regulations.

ASSMANN Electronic GmbH
 Auf dem Schüffel 3
 Lüdenscheid, Germany
<https://www.assmann.com>
info@assmann.com