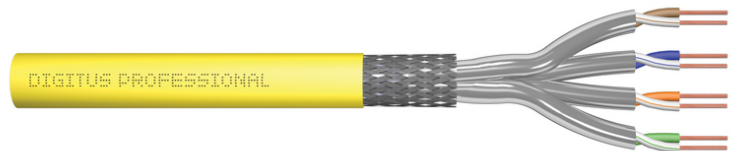


# DIGITUS CAT 7A S/FTP installation cable, 500 m, Simplex, B2ca

DK-1745-A-VH-5  
EAN 4016032435921



**CAT 7A S-FTP installation cable, 1500 MHz B2ca (EN 50575), AWG 22/1, 500 m drum,**

Digitus Cat 7A installation cable is designed for use in structured data center & building cabling in accordance with ISO/IEC 11801, DIN EN 50173, IEC 61156-7, EN 50288-9-1. Excellent for transmission of analog and digital, data, audio, video, signal transmission, 10 Gbit Ethernet, POE+. The shield structure consists of single shielded pairs with a tinned copper braid, which ensures excellent shielding and electrical values.

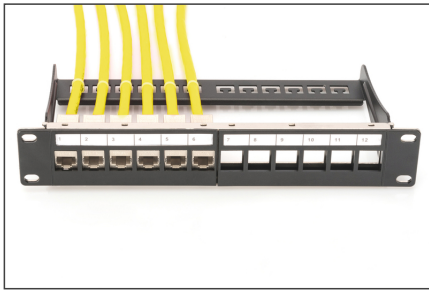
**DIGITUS® CAT 7A S/FTP installation cable 4x2x AWG22/1 up to 1500 MHz. The halogen-free cable sheath complies with the standards IEC 60332-3-24, FRNC-C, LSZH-3 and CPR Euro class B2ca. Complies with ISO/IEC 11801, DIN EN 50173, DIN EN 50288-4-1.**

- Physical properties:
- Conductor: Bare annealed copper, solid AWG 22/1
- Insulation: SFS-PE (Foam-Skin Polyethylene)
- Total number of insulated conductors: 8, twisted in 4 pairs
- Color code: Blue-white, orange-white, green-white, brown-white
- Individual pair shielding: Aluminum foil, providing 100 % coverage
- Overall shielding: Copper braid
- Outer sheath: Eca to B2ca acc. to EN 50575; LSZH
- Outer sheath diameter (nominal): 0,50 mm (Eca); 0,52 mm (Dca); 0,60 mm (Cca); 0,60 (B2ca)
- Mechanical properties:
- Tensile loading: 150N max.
- Dynamic bending radius: 8x AD mm min.
- Static bending radius: 4x AD mm min.
- Shipping- and storage temperature range: -20 °C up to +60 °C
- Operating temperature range: -20 °C up to +50 °C

- Installation temperature range: 0 °C up to +50 °C
- Overall diameter Simplex (nominal): 7,0 mm (Eca); 7,2 mm (Dca); 7,5 mm (Cca); 7,5 mm (B2ca)
- Weight (kg/km): 49,5 kg (Eca); 51 kg (Dca), 53 kg (Cca); 53 kg (B2ca)
- Electrical properties:
- Impedance: 100±15 Ohm @ 4 - 1000 MHz; 100±25 OHM @ 100-600 MHz
- Capacitance: 45 pF/m nominal @ 1 KHz
- Capacitance unbalance (pair-ground): 1.6 pF/m max. @ 1 KHz
- Insulation resistance: 5 GOhm x km min.
- DC resistance: 95 Ohm/km max. (2% max. resistance unbalance)
- DC loop resistance: 190 Ohm/km max. (2% max. resistance unbalance)
- Voltage resistance: 72 Vdc max.
- Coupling attenuation: CA-Type 1b
- Signal propagation delay: 450 nS/100 m max.
- Propagation delay: 10 nS/100 m max.
- Separating class: "d" acc. to EN 50174-2
- NVP: 79%
- Flame spread: EN 60332-1-2 (LSOH-PVC)
- Halogen-free, corrosiveness: EN 60754-1/2 (LSOH)
- Smoke density: EN 61034-2
- Assortment: Twisted Pair Installation Cables
- Category: CAT 7A
- Shielding: S-FTP, pairs in metal foil and braid shielding
- CPR: B2ca
- Length: 500 m
- Color: yellow
- Jacket: LSOH
- Structure: 4 x 2 AWG 22/1, solid twisted pair

Logistics						
	Number (pcs)	Weight (kg)	Depth (cm)	Width (cm)	Height (cm)	cm <sup>3</sup>
Packaging Unit Carton	1	33.57	55.00	55.00	22.50	68,062.50
Packaging Unit Inside	1	33.57	55.00	55.00	22.50	68,062.50
Packaging Unit Single	1	33.57	55.00	55.00	22.50	68,062.50
Net single without Packaging	1	33.23	55.00	55.00	22.50	68,062.50

More images:



AWG 22/1 1500 MHz 10 Cat.7 Ethernet CAT 7A 1000Mbps 20" x 50" 6 5 LSZH B2ca CPR class

DK-1745-A-VH-S // CAT 7 A S/FTP Installation Cable, 500m, Simplex, B2ca

Anwendungsbeispiel  
Example of use

DK-1745-A-VH-S // CAT 7 A S/FTP Installation Cable, 500m, Simplex, B2ca

Kabelquerschnitt  
Cable cross section

DK-1745-A-VH-S // CAT 7 A S/FTP Installation Cable, 500m, Simplex, B2ca

Produktdaten Product Information		Physikalische Spezifikationen Physical Properties	
Anwendungsgebiet Area of application	Netzwerk-Systeme, Server-Netz, Video-Übertragung, HD-Kamera-Systeme, Video-Übertragung, Video-Übertragung	Leiter Conductor	Nenn-Außendurchmesser (NOM) (Nominal OD) (mm)
Hersteller Manufacturer	DIGITUS Professional	Leitfähigkeit Conductivity	20°C (68°F) (min. 20°C) (max. 20°C) (min. 20°C)
Normen Norms	IEC 61084-1, IEC 61084-2, IEC 61084-3, IEC 61084-4	Spannungsfestigkeit Voltage Withstand Voltage	1000 V (1 min., 50°C)

Leitungsparameter Transmission Properties

FREQ. MHz	ATT dB	MLT dB	PLN dB	PLDN dB	PLN dB	RLX dB	RLX dB	PLN dB	PLN dB
1	14	110	80	100	100	91	90	100	100
10	42	110	107	100	100	93	90	100	100
100	160	110	167	100	100	97	90	100	100
200	200	110	200	100	100	97	90	100	100
300	240	110	240	100	100	97	90	100	100
400	280	110	280	100	100	97	90	100	100
500	320	110	320	100	100	97	90	100	100
600	360	110	360	100	100	97	90	100	100
700	400	110	400	100	100	97	90	100	100
800	440	110	440	100	100	97	90	100	100
900	480	110	480	100	100	97	90	100	100
1000	520	110	520	100	100	97	90	100	100

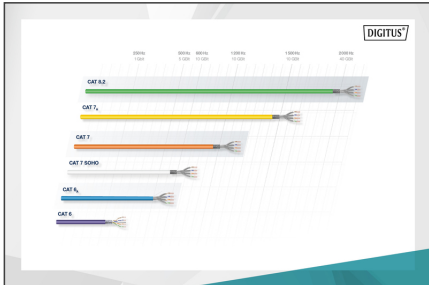
Certificate of Approval  
Zertifikat

Class E1

GHMT

CE ASBMAANN

ASBMAANN



DIGITUS Professional

B2ca	Softflex hochsteck	1+	1
Cca	Mech hochsteck	1+	1
Dca	Mech	3	1
Eca	Clasping low	3	1

