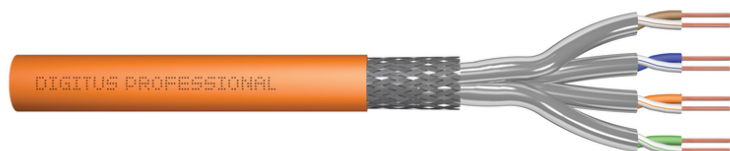


# DIGITUS Cat.7 S/FTP installation cable, 1000 m, simplex, B2ca

DK-1745-VH-10  
EAN 4016032435891



### CAT 7 S-FTP installation cable, 1200 MHz B2ca (EN 50575), AWG 23/1, 1000 m drum,

The Digitus Cat 7 installation cable is designed for use in the structured data center and the building cabling according to ISO/IEC 11801, DIN EN 50288-4-1, DIN EN 50173, IEC 61156-7, EN 50288-9-1. The cable is perfectly suitable for the transmission of both analog and digital data and also supports POE and POE+. The shielding structure is composed of single shielded pairs with a tinned copper braid, which ensures excellent shielding and electrical values.

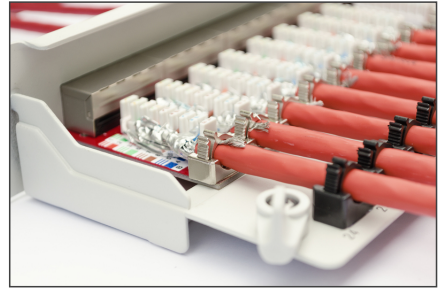
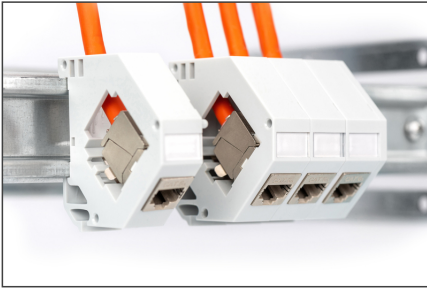
#### Future-oriented standards and high-end quality for your network.

- Physical properties:
- Conductor: Bare copper wire, AWG 23/1
- System(s) of assessment and verification of constancy of performance: System 3
- Insulation: SFS-PE (foamed polyethylene jacket)
- Total number of insulated conductors: 8, twisted into 4 pairs
- Color code: Blue-white, orange-white, green-white, brown-white
- Shielding of the individual pairs: aluminum-laminated polyester film, covers 100%
- Overall shielding: copper braiding
- Outer sheath: Eca to B2ca in accordance with EN 50575; LSZH
- Outer sheath thickness (nominal): 0.50 mm (Eca); 0.52 mm (Dca); 0.60 mm (Cca); 0.60 (B2ca)
- Color: Orange (RAL 2008)
- Mechanical properties:
- Strain relief: 150N max.
- Dynamic bending radius: 8x AD mm min.
- Static bending radius: 4x AD mm min.

- Transport and storage temperature range: -20 °C to +60 °C
- Operating temperature range: -20 °C to +50 °C
- Installation temperature range: 0 °C to +50 °C
- Outer diameter simplex (nominal): 7.0 mm (Eca); 7.2 mm (Dca); 7.5 mm (Cca); 7.5 mm (B2ca)
- Weight (kg/km): 49.5 kg (Eca); 51 kg (Dca), 53 kg (Cca); 53 kg (B2ca)
- Electrical properties:
- Impedance: 100±15 Ohm @ 4 - 1000 MHz; 100±25 OHM @ 100-600 MHz
- Capacitance: 45 pF/m nominal @ 1 KHz
- Capacitance unbalance (pair-earth): 1.6 pF/m max. @ 1 KHz
- Insulation resistance: 5 GOhm x km min.
- DC resistance: 95 Ohm/km max. (2% max. unbalanced resistance)
- Loop resistance: 190 Ohm/km max. (2% max. unbalanced resistance)
- Operating voltage: 72 Vdc max.
- Outer sheath: Dca-s2 d1 a1 according to EN 50575; LSZH
- Coupling attenuation: CA-Type 1b
- Phase delay: 450 nS/100 m max.
- Time delay: 10 nS/100 m max.
- Separation class: "d" according to EN 50174-2
- NVP: 79%
- Assortment: Twisted Pair Installation Cables
- Category: CAT 7
- Shielding: S-FTP, pairs in metal foil and braid shielding
- CPR: B2ca
- Length: 1000 m
- Color: orange
- Jacket: LSOH
- Structure: 4 x 2 AWG 23/1, solid twisted pair

Logistics						
	Number (pcs)	Weight (kg)	Depth (cm)	Width (cm)	Height (cm)	cm³
Packaging Unit Carton	1	47.00	55.00	55.00	35.00	105,875.00
Packaging Unit Inside	1	47.00	55.00	55.00	35.00	105,875.00
Packaging Unit Single	1	47.00	55.00	55.00	35.00	105,875.00
Net single without Packaging	1	46.66	55.00	55.00	35.00	105,875.00

More images:



**CAT 7 S/FTP Installation Cable, 1,000 m, Simplex, B2<sub>ca</sub>**

- AWG 23/1
- 1200 MHz
- 10 Gbit Ethernet
- CAT 7 1,000 m
- 20/14.50°
- LSZH
- B2<sub>ca</sub> CPRI class

**DK.1745-VH-10 // CAT 7 S/FTP Installation Cable, 1000m, Simplex, B2<sub>ca</sub>**

**Anwendungsbeispiel**  
Example of use

**DK.1745-VH-10 // CAT 7 S/FTP Installation Cable, 1000m, Simplex, B2<sub>ca</sub>**

**Kabelquerschnitt**  
Cable cross section

**Produktinformationen Product Information**

<b>Bestandteile</b>	1000m CAT 7 S/FTP Installation Cable, 1000m, Simplex, B2 <sub>ca</sub>	<b>Produkttyp</b>	1000m CAT 7 S/FTP Installation Cable, 1000m, Simplex, B2 <sub>ca</sub>
<b>Bestandteile</b>	1000m CAT 7 S/FTP Installation Cable, 1000m, Simplex, B2 <sub>ca</sub>	<b>Produkttyp</b>	1000m CAT 7 S/FTP Installation Cable, 1000m, Simplex, B2 <sub>ca</sub>

**Technische Eigenschaften Technical Properties**

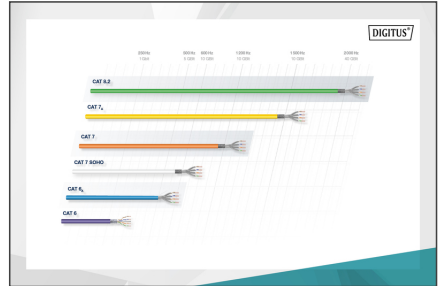
<b>Hersteller</b>	Digitus	<b>Material</b>	100% Polyethylene (PE) / 100% Polypropylene (PP)
<b>Material</b>	100% Polyethylene (PE) / 100% Polypropylene (PP)	<b>Farbe</b>	Orange
<b>Abmessungen</b>	1000m	<b>Abmessungen</b>	1000m

**Mechanische Eigenschaften Mechanical Properties**

<b>Temperaturbereich</b>	-20°C bis +75°C	<b>Temperaturbereich</b>	-20°C bis +75°C
<b>Temperaturbereich</b>	-20°C bis +75°C	<b>Temperaturbereich</b>	-20°C bis +75°C

**Leitungsparameter Transmission Properties**

PAIR	ATT	NEXT	PS NEXT	ACR	PS ACR	ISL	EXTEN	PS EXTEN
1	2	3	7	2	7	2	3	7
10	10	10	10	10	10	10	10	10
100	100	100	100	100	100	100	100	100
1000	1000	1000	1000	1000	1000	1000	1000	1000



**CEP Konformität**

<b>B2<sub>ca</sub></b>	Stark hoch	<b>1+</b>	• Spinnungsbildung • Spinnungsbildung
<b>C<sub>ca</sub></b>	Hoch	<b>3</b>	• Spinnungsbildung • Spinnungsbildung
<b>D<sub>ca</sub></b>	Mittel	<b>3</b>	• Spinnungsbildung • Spinnungsbildung
<b>E<sub>ca</sub></b>	Gering	<b>3</b>	• Spinnungsbildung • Spinnungsbildung

**CEP Konformität**

<b>C<sub>ca</sub></b>	<b>s1a</b>	<b>d1</b>	<b>a1</b>
-----------------------	------------	-----------	-----------

