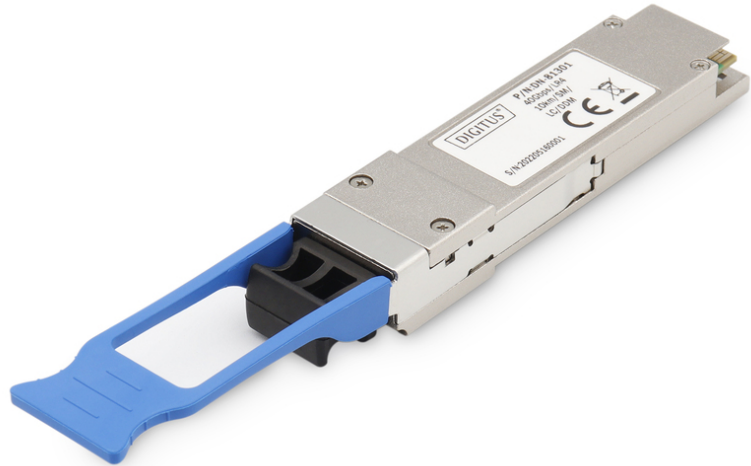


DIGITUS QSFP+ 40 Gbps Module, Singlemode, 1310nm, 10km

DN-81301
EAN 4016032424253



QSFP 40 Gbps Module, Singlemode, 1310nm, 10Km MPO Connector, OM3

The DIGITUS® SFP transceiver modules offer highest quality and reliability. Whether from switch to switch, converter to switch, converter to converter or any else application: The wide product range of DIGITUS® modules makes possible a flexible usage of the fiber technology. The conformity to the MSA (Multi Source Agreement) standard ensures a compatibility to third party manufacturers.

The plug and play fiber connection

- QSFP+ module
- Compatible with the following manufacturers: Allied Telesis, Allnet, Avaya, CISCO, D-Link, Edimax, FINISAR, FORCE 10, Gigamon, Intellinet, KTI Networks, Level One, PLANET, Tenda, TP-Link, TRENDnet, Mikrotik, ENTERASYS, RIVERSTONE, Unifi, Ubiquiti, ZyXEL, ZTE
- Connector: 1x LC
- Wavelength: 1310nm, Singlemode
- 40 Gbps Maximum Data Rate
- Transmission power: minimum -7 dBm, maximum 2.3 dBm
- Sensitivity Receiving Power: Minimum -11.5 dBm
- For a Distance of up to 10km: Singlemode OS2

- Safe fast-locking mechanism
- Supports DDM (Digital Diagnostic Monitoring)
- High quality and excellent reliability
- Compliant to IEEE 802.3ba 40 Gigabit Standard
- Class 1 laser product compliant with EN 60825-1
- Easy plug-and-play installation
- MSA (Multi Source Agreement) compliant
- Hot pluggable
- 3.3V power supply
- Suitable for OS2 singlemode fiber cables
- Operating temperature: 0 °C ~ 70 °C
- Mode: Singlemode
- Connector: LC
- Distance (km): 10
- Wavelength: 1310 nm
- DDM Support: yes
- Broadcasting Mode: Unidirectional
- Manufacturer compatibility: Universal (MSA), Cisco
- Ethernet speed: 40 Gigabit

Package contents

- QSFP+ module

Logistics						
	Number (pcs)	Weight (kg)	Depth (cm)	Width (cm)	Height (cm)	cm ³
Packaging Unit Carton	120	10.00	55.00	39.50	25.00	54,312.50
Packaging Unit Inside	1	0.08	11.70	9.30	3.20	348.19
Packaging Unit Single	1	0.08	11.70	9.30	3.20	348.19
Net single without Packaging	1	0.05	11.70	9.30	3.20	348.19

More images:

