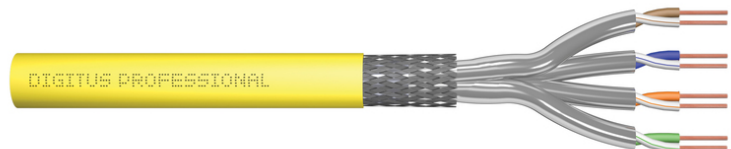


DIGITUS Cat. 7A S/FTP, installation cable, 500 m, simplex, Dca-s1a d1 a1

DK-1743-A-VH-5
EAN 4016032363842



CAT 7A S-FTP installation cable, 1500 MHz, Dca AWG 22/1, 500 m drum, Sx, yellow

The Digitus Cat 7 installation cable is designed for use in the structured data center and the building cabling according to ISO/IEC 11801, DIN EN 50288-4-1, DIN EN 50173, IEC 61156-7, EN 50288-9-1. The cable is perfectly suitable for the transmission of both analog and digital data and also supports POE and POE+. The shielding structure is composed of single shielded pairs with a tinned copper braid, which ensures excellent shielding and electrical values.

Future-oriented standards and high-end quality for your network.

- Physical properties:
- Conductor: Bare copper wire, AWG 22/1
- System(s) for the assessment and verification of constancy of performance: System 3
- Insulation: SFS-PE (foamed polyethylene jacket)
- Total number of insulated conductors: 8, twisted into 4 pairs
- Color code: Blue-white, orange-white, green-white, brown-white
- Shielding of the individual pairs: aluminum-laminated polyester film, covers 100%
- Overall shielding: tinned copper braiding
- Outer sheath: Dca to Cca according to EN 50575; LSZH
- Outer sheath thickness (nominal): 0.60 mm (Dca); 0.60 mm (Cca)
- Outer sheath color: Yellow (RAL 1028)
- Mechanical properties:
- Strain relief: 150 N max.
- Dynamic bending radius: 8x AD mm min.
- Static bending radius: 4x AD mm min.
- Transport and storage temperature range: -20 °C to +60 °C

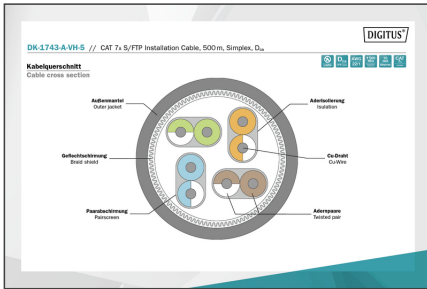
- Operating temperature range: -20 °C to +60 °C
- Installation temperature range: 0 °C to +50 °C
- Outer diameter (nominal): 7.8 mm (Dca); 7.8 mm (Cca)
- Weight (kg/km): 65 kg (Dca); 65 kg (Cca)
- Electrical properties:
- Impedance: 100±5 Ohm @ 1-1000 MHz
- Capacitance: 40 pF/m nominal @ 1 KHz
- Capacitance unbalance (pair-earth): 1.6 pF/m max. @ 1 KHz
- Insulation resistance: 5 GOhm x km min.
- Loop resistance: 147 Ohm/Km max. (2% max. unbalanced resistance)
- Operating voltage: 72 Vdc max.
- Coupling attenuation: CA-Type 1b
- Phase delay: 450 nS/100 m max.
- Time delay: 10 nS/100 m max.
- Separation class: "d" according to EN 50174-2
- NVP: 79%
- Flame spread: EN 60332-1-2 (LSOH-PVC)
- Halogen-free, corrosiveness: EN 60754-1/2 (LSOH)
- Smoke density: EN 61034-2

Attributes

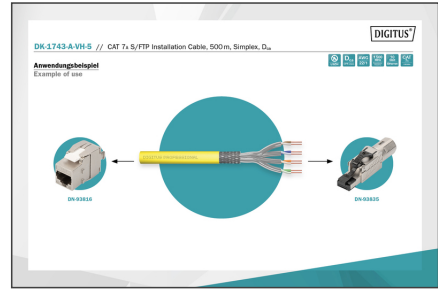
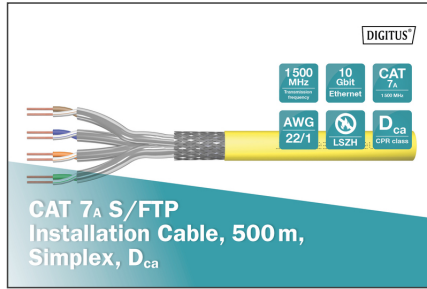
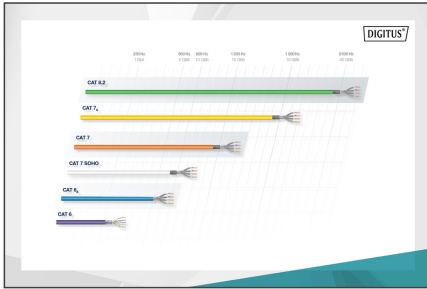
- Assortment: Twisted Pair Installation Cables
- Category: CAT 7A
- Shielding: S-FTP, pairs in metal foil and braid shielding
- CPR: Dca
- Length: 500 m
- Color: yellow
- Jacket: LSOH
- Structure: 4 x 2 AWG 22/1, solid twisted pair

Logistics						
	Number (pcs)	Weight (kg)	Depth (cm)	Width (cm)	Height (cm)	cm ³
Packaging Unit Carton	1	33.50	53.00	53.00	43.50	122,192.00
Packaging Unit Inside	1	33.50	53.00	53.00	43.50	122,192.00
Packaging Unit Single	1	33.50	53.00	53.00	43.50	122,192.00
Net single without Packaging	1	33.16	53.00	53.00	43.50	122,192.00

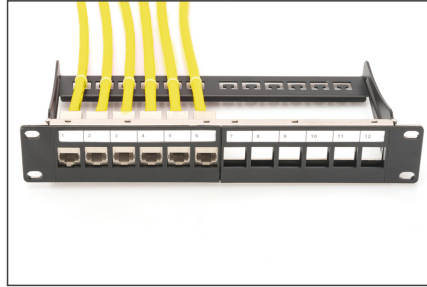
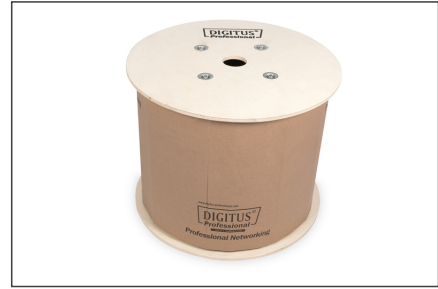
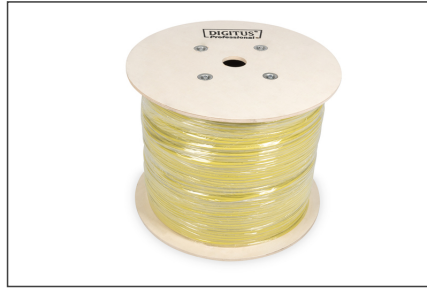
More images:



FREQ.	ATT	RETT	PS-RETT	ACN	PS-ACN	IN	REKT	PS-REKT
1	1.0	1.0	1.0	1.0	1.0	1.0	1.0	1.0
10	1.2	1.0	1.0	1.0	1.0	1.0	1.0	1.0
100	1.5	1.0	1.0	1.0	1.0	1.0	1.0	1.0
1000	2.0	1.0	1.0	1.0	1.0	1.0	1.0	1.0
10000	4.0	1.0	1.0	1.0	1.0	1.0	1.0	1.0
100000	10.0	1.0	1.0	1.0	1.0	1.0	1.0	1.0
1000000	20.0	1.0	1.0	1.0	1.0	1.0	1.0	1.0
10000000	40.0	1.0	1.0	1.0	1.0	1.0	1.0	1.0
100000000	80.0	1.0	1.0	1.0	1.0	1.0	1.0	1.0
1000000000	160.0	1.0	1.0	1.0	1.0	1.0	1.0	1.0



Produktbeschreibung / Product Information	Physikalische Spezifikationen / Physical Properties
Bestandteile: 1x 500m CAT 7 A S/FTP Installation Cable, Simplex, Dca	Material: Polyethylene (PE) jacket, PVC insulation, copper conductors
Technische Daten: CAT 7 A S/FTP, 10 Gbit Ethernet, AWG 22/1, LSZH, Dca	Leitungsstruktur: 4 twisted pairs, 1 shielded pair, 12 conductors
Mechanische Eigenschaften: 500m length, 100mm diameter, 100mm length	Mechanische Eigenschaften: 500m length, 100mm diameter, 100mm length
Umweltbedingungen: -20°C to +70°C, 95% humidity	Umweltbedingungen: -20°C to +70°C, 95% humidity



Safety notes

- Data cables must not be bent, stretched or twisted excessively. Sharp bends can damage the cable sheath and lead to failures or short circuits.
- Installation only by trained specialists.
- Installation only in dry rooms.
- The data cable must not be in direct contact with other electrical cables or high-voltage sources in order to avoid electromagnetic interference.

EU responsible person

EU based economic operator ensuring the product complies with the required regulations.

ASSMANN Electronic GmbH
 Auf dem Schüffel 3
 Lüdenscheid, Germany
<https://www.assmann.com>
info@assmann.com