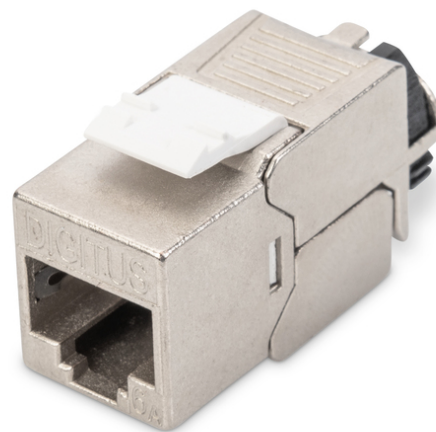


DIGITUS Cat. 6A keystone module, shielded with intelligent cable manager

DN-93617
EAN 4016032353539



CAT 6A Keystone Jack, shielded tool free connection

The shielded cat. 6A keystone module set DN-93617 from DIGITUS® impresses with future-oriented standards and high-end quality for your network. The modules have a 360° shield contact and a resealable, intelligent cable manager for cable grip and cable fixation. The compact design makes series installation possible in a 483 mm (19") 1U panel. Tool-free installation uses LSA rails color-coded in accordance with EIA/TIA 568 A&B. Its compact design also means that the module fits in design-compatible modular junction boxes.

Multi-design, shielded, tool free and intelligent cable manager

- Category 6A 10GBase-T, 500 MHz
- ISO/IEC 11801 3rd Edition, EN 50173-1
- Suitable for PoE/PoE+/4PPoE (IEEE 802.3af, 802.3at, 802.3bt)
- Suitable for modular patch panel and modular wall outlet installation.
- RJ45-Jack, 8P8C
- Cable installation via insulation-displacement connectors, color coded in accordance with EIA/TIA 568 A & B
- Cable grip and cable fixation using intelligent cable manager
- Tool-free mounting connection

- 360° shield contact
- Case material: Zinc die-cast – nickel-plated
- Contact material: Phosphor bronze
- Contact coating: Nickel, gold-plated 0.5 μ
- Insertion force: Max. 30N (as per IEC 60603-7-51)
- Holding force: 7.7 kg between jack and plug
- Operating temperature range: -20 °C to +70 °C (ISO/IEC 11801, ANSI/TIA 568 C.2)
- Mating cycles: ≥ 1000 (ISO/IEC 11801, IEC 60603-7-51)
- Copper cable diameter: AWG (26/7 – 22/1), stranded and solid wire
- Tested with AWG 22/1 solid installation cable
- (DIGITUS® DK-174X-A-VH-X; AWG 22/1 cat. 7A installation cable)
- Dielectric strength: 1000 VDC (contact/contact), 1500 VDC (contact/ground)
- Tool-free installation using LSA insulation-displacement connectors color coded in accordance with EIA/TIA 568 A & B
- Intelligent cable manager (resealable)
- Dimensions (HxWxD): 21.0 x 14.5 x 34.5 mm
- Weight: 19.5 g

Logistics						
	Number (pcs)	Weight (kg)	Depth (cm)	Width (cm)	Height (cm)	cm³
Packaging Unit Carton	250	6.15	48.50	40.00	25.00	48,500.00
Packaging Unit Inside	25	0.62	23.00	23.00	7.50	3,967.50
Packaging Unit Single	1	0.02	3.10	1.50	2.10	9.77
Net single without Packaging	1	0.02	3.10	1.50	2.10	9.77

More images:

