

DIGITUS Cat.6A U/FTP installation cable, 500 m, simplex, Eca

DK-1623-A-VH-5
EAN 4016032344216



CAT 6A U-FTP installation cable, 500 MHz Eca (EN 50575), AWG 23/1, 500 m drum, sx, blue

The Digitus® Cat.6A U/FTP installation cable is characterized by the following cable construction 4x2x AWG23/1 and reaches a transmission frequency up to 500 MHz. The halogen free cable jacket is conform to the standard IEC 60332-1, FRNC-B, LSZH-1 and CPR Euro class Eca. The cable is suitable for building structured cabling in the secondary and tertiary area. Compliant with the following standards ISO/IEC 11801, DIN EN 50173, DIN EN 50288-10-1.

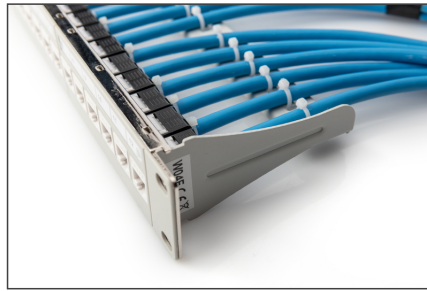
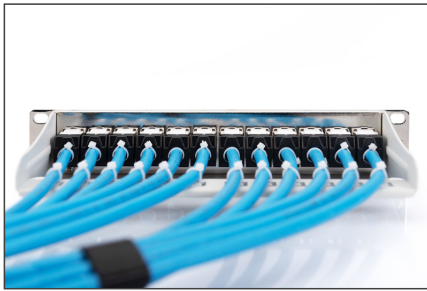
Future-oriented standards and high-end quality for your network.

- Physical properties:
- Conductor: Bare annealed copper, solid AWG 23/1
- System/s of AVCP: AVCP 3
- Total number of insulated conductors: 8, twisted in 4 pairs
- Color code: Blue-white, orange-white, green-white, brown-white
- Individual pair shielding: Aluminum foil, providing 100 % coverage
- Overall shielding: None, with drain wire
- Outer sheath: Eca to B2ca acc. to EN 50575; LSZH
- Outer sheath color: Light blue (RAL 5012)
- Mechanical properties:
- Tensile loading: 150N max.
- Dynamic bending radius: 8x AD mm min.
- Static bending radius: 4x AD mm min.
- Shipping- and storage temperature range: -20 °C up to +60 °C
- Operating temperature range: -20 °C up to +75 °C

- Installation temperature range: 0 °C up to +50 °C
- Overall diameter Simplex (nominal): 7.0 (Eca); 7,2 mm (Dca); 7,6 mm (Cca); 7,6 mm (B2ca)
- Weight (kg/km): 56 kg (Eca); 57 kg (Dca); 58 kg (Cca); 58 kg (B2ca)
- Electrical properties:
- Impedance: 100±15 Ohm @ 4 - 100MHz; 100±25 Ohm @100-500 MHz
- Capacitance: 45 pF/m nominal @ 1 KHz
- Capacitance unbalance (pair-ground): 1.6 pF/m max. @ 1 KHz
- Insulation resistance: 5 GOhm x km min.
- DC loop resistance: 190 Ohm/km max. (2% max. resistance unbalance)
- Voltage resistance: 72 Vdc max.
- Coupling attenuation: CA-Type 2
- Signal propagation delay: 450 nS/100 m max.
- Propagation delay: 15 nS/100 m max.
- Separating class: "c" acc. to EN 50174-2
- NVP: 70%
- Assortment: Twisted Pair Installation Cables
- Category: CAT 6A
- Shielding: U-FTP, pairs in metal foil
- CPR: Eca
- Length: 500 m
- Color: light-blue
- Jacket: LSOH
- Structure: 4 x 2 AWG 23/1, solid twisted pair

Logistics						
	Number (pcs)	Weight (kg)	Depth (cm)	Width (cm)	Height (cm)	cm ³
Packaging Unit Carton	1	28.00	40.00	30.00	30.00	36,000.00
Packaging Unit Inside	1	28.00	40.00	30.00	30.00	36,000.00
Packaging Unit Single	1	28.00	40.00	30.00	30.00	36,000.00
Net single without Packaging	1	27.84	40.00	30.00	30.00	36,000.00

More images:



DIGITUS

AWG 23/1 | 500 MHz | 10 Gbit Ethernet | CAT 6a | Eca | LSZH | CPRI class

CAT 6a U/FTP Installation Cable, 500m, Simplex, Eca

DIGITUS

DK-1623-A-VH-S // CAT 6a U/FTP Installation Cable, 500m, Simplex, Eca

Anwendungsbeispiel
Example of use

DIGITUS

DK-1623-A-VH-S // CAT 6a U/FTP Installation Cable, 500m, Simplex, Eca

Kabelquerschnitt
Cable cross section

DIGITUS

Produktdatenblatt / Product Information	Physikalische Spezifikationen / Physical Properties
Identifikationsdaten / Identification Data	Typ / Type
Produktname / Product Name: Patch Cable, Simplex, 500m, 23 AWG, LSZH, Eca	Typ / Type: Patchkabel, 500m, 23 AWG, LSZH, Eca
Teilenummer / Part Number: DK-1623-A-VH-S	Hersteller / Manufacturer: DIGITUS
Material / Material: PVC, LSZH	Abmessungen / Dimensions: 23 AWG, LSZH, Eca
Farbe / Color: Blau / Blue	Leistungsfähigkeit / Performance: 10 Gbit Ethernet
Umweltbedingungen / Environmental Conditions: -20°C bis +75°C	Temperaturbereich / Temperature Range: -20°C bis +75°C
Abmessungen / Dimensions: 23 AWG, LSZH, Eca	Lebensdauer / Lifetime: 10 Jahre / 10 years
Material / Material: PVC, LSZH	Abmessungen / Dimensions: 23 AWG, LSZH, Eca
Umweltbedingungen / Environmental Conditions: -20°C bis +75°C	Lebensdauer / Lifetime: 10 Jahre / 10 years
Abmessungen / Dimensions: 23 AWG, LSZH, Eca	Lebensdauer / Lifetime: 10 Jahre / 10 years

DIGITUS

Leistungseigenschaften / Performance Properties

AWG	AWG	AWG	AWG	AWG	AWG	AWG	AWG	AWG	AWG
24	23	22	21	20	19	18	17	16	15
0,25	0,25	0,25	0,25	0,25	0,25	0,25	0,25	0,25	0,25
1,0	1,0	1,0	1,0	1,0	1,0	1,0	1,0	1,0	1,0
1,0	1,0	1,0	1,0	1,0	1,0	1,0	1,0	1,0	1,0
1,0	1,0	1,0	1,0	1,0	1,0	1,0	1,0	1,0	1,0
1,0	1,0	1,0	1,0	1,0	1,0	1,0	1,0	1,0	1,0
1,0	1,0	1,0	1,0	1,0	1,0	1,0	1,0	1,0	1,0
1,0	1,0	1,0	1,0	1,0	1,0	1,0	1,0	1,0	1,0
1,0	1,0	1,0	1,0	1,0	1,0	1,0	1,0	1,0	1,0
1,0	1,0	1,0	1,0	1,0	1,0	1,0	1,0	1,0	1,0

Intertek

ETL Verified Certificate of Compliance Number: 1942299RST-011

Approved for use in the United States of America for the following applications:

Category 6 Ethernet Patch Cables

Compliance with the following standards:

- ANSI/TIA-568-C.0
- ANSI/TIA-568-C.2
- ANSI/TIA-568-C.3
- ANSI/TIA-568-C.4
- ANSI/TIA-568-C.5
- ANSI/TIA-568-C.6
- ANSI/TIA-568-C.7
- ANSI/TIA-568-C.8
- ANSI/TIA-568-C.9
- ANSI/TIA-568-C.10
- ANSI/TIA-568-C.11
- ANSI/TIA-568-C.12
- ANSI/TIA-568-C.13
- ANSI/TIA-568-C.14
- ANSI/TIA-568-C.15
- ANSI/TIA-568-C.16
- ANSI/TIA-568-C.17
- ANSI/TIA-568-C.18
- ANSI/TIA-568-C.19
- ANSI/TIA-568-C.20
- ANSI/TIA-568-C.21
- ANSI/TIA-568-C.22
- ANSI/TIA-568-C.23
- ANSI/TIA-568-C.24
- ANSI/TIA-568-C.25
- ANSI/TIA-568-C.26
- ANSI/TIA-568-C.27
- ANSI/TIA-568-C.28
- ANSI/TIA-568-C.29
- ANSI/TIA-568-C.30
- ANSI/TIA-568-C.31
- ANSI/TIA-568-C.32
- ANSI/TIA-568-C.33
- ANSI/TIA-568-C.34
- ANSI/TIA-568-C.35
- ANSI/TIA-568-C.36
- ANSI/TIA-568-C.37
- ANSI/TIA-568-C.38
- ANSI/TIA-568-C.39
- ANSI/TIA-568-C.40
- ANSI/TIA-568-C.41
- ANSI/TIA-568-C.42
- ANSI/TIA-568-C.43
- ANSI/TIA-568-C.44
- ANSI/TIA-568-C.45
- ANSI/TIA-568-C.46
- ANSI/TIA-568-C.47
- ANSI/TIA-568-C.48
- ANSI/TIA-568-C.49
- ANSI/TIA-568-C.50
- ANSI/TIA-568-C.51
- ANSI/TIA-568-C.52
- ANSI/TIA-568-C.53
- ANSI/TIA-568-C.54
- ANSI/TIA-568-C.55
- ANSI/TIA-568-C.56
- ANSI/TIA-568-C.57
- ANSI/TIA-568-C.58
- ANSI/TIA-568-C.59
- ANSI/TIA-568-C.60
- ANSI/TIA-568-C.61
- ANSI/TIA-568-C.62
- ANSI/TIA-568-C.63
- ANSI/TIA-568-C.64
- ANSI/TIA-568-C.65
- ANSI/TIA-568-C.66
- ANSI/TIA-568-C.67
- ANSI/TIA-568-C.68
- ANSI/TIA-568-C.69
- ANSI/TIA-568-C.70
- ANSI/TIA-568-C.71
- ANSI/TIA-568-C.72
- ANSI/TIA-568-C.73
- ANSI/TIA-568-C.74
- ANSI/TIA-568-C.75
- ANSI/TIA-568-C.76
- ANSI/TIA-568-C.77
- ANSI/TIA-568-C.78
- ANSI/TIA-568-C.79
- ANSI/TIA-568-C.80
- ANSI/TIA-568-C.81
- ANSI/TIA-568-C.82
- ANSI/TIA-568-C.83
- ANSI/TIA-568-C.84
- ANSI/TIA-568-C.85
- ANSI/TIA-568-C.86
- ANSI/TIA-568-C.87
- ANSI/TIA-568-C.88
- ANSI/TIA-568-C.89
- ANSI/TIA-568-C.90
- ANSI/TIA-568-C.91
- ANSI/TIA-568-C.92
- ANSI/TIA-568-C.93
- ANSI/TIA-568-C.94
- ANSI/TIA-568-C.95
- ANSI/TIA-568-C.96
- ANSI/TIA-568-C.97
- ANSI/TIA-568-C.98
- ANSI/TIA-568-C.99
- ANSI/TIA-568-C.100

GHMT

Certificate No. 19884-21

Zertifikat No. 19884-21

Category 6

Kategorie 6

GHMT Type Approval

DIGITUS

DIGITUS

Performance Properties

Category	Performance	Speed	Distance
B2ca	Super hoch	1+	100m
Cca	Hoch	1+	100m
Dca	Mittel	3	100m
Eca	Gering	3	100m

