

DIGITUS Cat.6A U/UTP installation cable, 500 m, simplex, Eca

DK-1613-A-VH-5
EAN 4016032344209



CAT 6A U-UTP installation cable, 500 MHz Eca (EN 50575), AWG 23/1, 500 m drum, sx, blue

The Digitus Cat 6A U/UTP installation cable is designed for use in the structured data center and the building cabling according to ISO/IEC 11801, DIN EN 50288-11-1, DIN EN 50173, IEC 60332-1. The cable is perfectly suitable for the transmission of both analog and digital data and also supports POE and POE+.

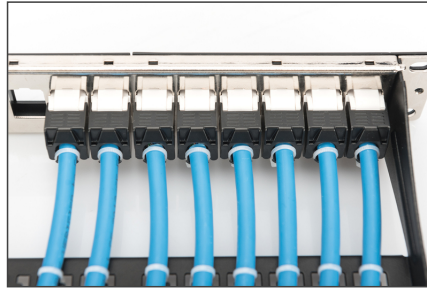
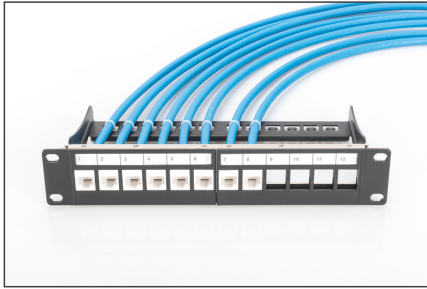
Future-oriented standards and high-end quality for your network.

- Physical properties:
- Conductor: Bare annealed copper, olid AWG 23/1
- Insulation: HD-PE (High Density Polyethylene)
- Total number of insulated conductors: 8, twisted in 4 pairs
- Color code: Blue-white, orange-white, green-white, brown-white
- Individual pair shield: None
- Overall shielding: None
- Outer sheath: Eca to B2ca acc. to EN 50575; LSZH
- Outer sheath diameter (nominal): 0,5 mm (Eca); 0,6 mm (Dca); 1,2 mm (Cca); 1,4 mm (B2ca)
- Outer sheath color: Light blue (RAL 5012)
- Mechanical properties:
- Tensile loading: 150N max.
- Dynamic bending radius: 8x AD mm min.
- Static bending radius: 4x AD mm min.
- Shipping- and storage temperature range: -20 °C up to +60 °C

- Operating temperature range: -20 °C up to +75 °C
- Installation temperature range: 0 °C up to +50 °C
- Overall diameter Simplex (nominal): 7,1 mm (Eca); 7,3 mm (Dca); 7,4 mm (Cca); 7,6 mm (B2ca)
- Weight (kg/km): 53 kg (Eca); 54 kg (Dca); 55 kg (Cca); 56 kg (B2ca)
- Electrical properties:
- Impedance: 100±5Ohm @ 1 - 600MHz
- Capacitance: 40 pF/m nominal @ 1 KHz
- Capacitance unbalance (pair-ground): 1.6 pF/m max. @ 1 KHz
- Insulation resistance: 5 GOhm x km min.
- DC loop resistance: 147 Ohm/km max. (2% max. resistance unbalance)
- Voltage resistance: 72 Vdc max.
- Coupling attenuation: CA-Type 2
- Signal propagation delay: 450 nS/100 m max.
- Propagation delay: 10 nS/100 m max.
- Separating class: "c" acc. to EN 50174-2
- NVP: 70%
- Assortment: Twisted Pair Installation Cables
- Category: CAT 6A
- Shielding: U-UTP, unshielded
- CPR: Eca
- Length: 500 m
- Color: light-blue
- Jacket: LSOH
- Structure: 4 x 2 AWG 23/1, solid twisted pair

Logistics						
	Number (pcs)	Weight (kg)	Depth (cm)	Width (cm)	Height (cm)	cm ³
Packaging Unit Carton	1	27.50	50.00	50.00	22.00	55,000.00
Packaging Unit Inside	1	27.50	50.00	50.00	22.00	55,000.00
Packaging Unit Single	1	27.50	50.00	50.00	22.00	55,000.00
Net single without Packaging	1	27.34	50.00	50.00	22.00	55,000.00

More images:



CAT 6_A U/UTP Installation Cable, 500m, Simplex, E_{ca}

- AWG 23/1
- 500 MHz
- 10 Gbit Ethernet
- CAT 6_A (see spec)
- 20°/74°
- LSZH
- E_{ca} (see spec)

DK-1613-A-VH-S // CAT 6_A U/UTP Installation Cable, 500m, Simplex, E_{ca}

Anwendungsbeispiel
Example of use

DK-1613-A-VH-S // CAT 6_A U/UTP Installation Cable, 500m, Simplex, E_{ca}

Kabelquerschnitt
Cable cross section

Produktinformationen Product Information

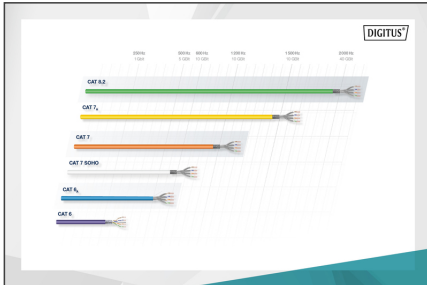
Bestandteile	500m CAT 6 _A U/UTP Installation Cable, 500m, Simplex, E _{ca}
Technische Eigenschaften	<ul style="list-style-type: none"> AWG: 23/1 Bandbreite: 500 MHz Übertragungsraten: 10 Gbit Ethernet U/UTP: U/UTP Shielding: Simplex Flammverhalten: LSZH CE-Kennzeichnung: E_{ca}

Leistungsmerkmale Transmission Properties

Strecke	100m	150m	200m	250m	300m	350m	400m	450m	500m
Attenuation	1.5	2.1	2.7	3.3	3.9	4.5	5.1	5.7	6.3
Return Loss	15	14	13	12	11	10	9	8	7

intertek

RoHS Verified Certificate of Compliance Number: 10000000000000000000



CE-Kennzeichnung

CE-Kennzeichnung: C_{ca} s1a d1 a1

Leistungsmerkmale: 1+

Abgleich der verbleibenden Leiter: 3

Zusätzliche Kennzeichnung: s, d, a

