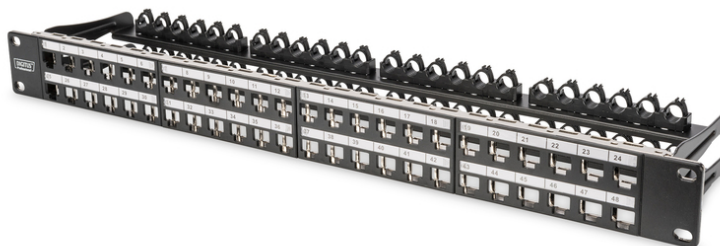


DIGITUS Modular High Density Patch Panel, shielded

DN-91424
EAN 4016032343318



Modular Patch Panel, shielded, 48-port label field, 1U, rack mount, black RAL 9005

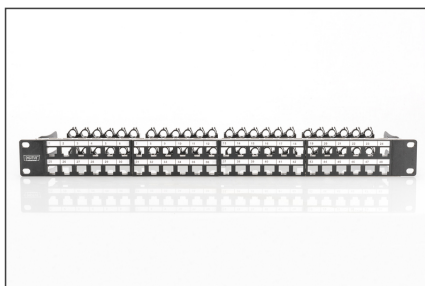
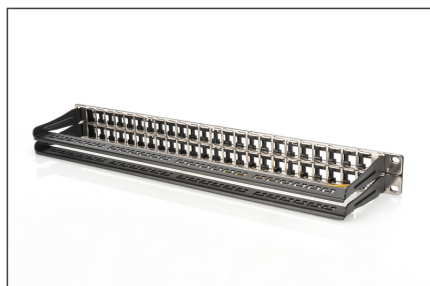
The DIGITUS® 48 Port 1U Modular Patch Panel ensures a High Density with the benefit of 48 Keystone Jacks in just one height unit.

- Layout Keystone Entry: Straight
- Area of application: 483 mm (19") cabinet
- Norms: ISO/IEC 11801 3rd Ed., EN 50173-1, EIA/TIA 568-C
- General properties:
- Suitable for 483 mm (19") cabinet mounting
- Suitable for shielded Digitus® Keystone Modules and Couplers
- Central ground connection
- Plastic label field
- Technical properties:
- Housing material: 1.5 mm SPCC cold rolled steel sheet, powder-coated

- Material standard: EN 10 130(1991), BS 1449, NFA 36/401, DIN 1623, UNI 5866, UNE 36-086, SIS, JIS G 3141, ASTM, SAE, NFA 36/401
- Grounding bar material: Galvanized steel
- Physical properties:
- Operation temperature: -20° C to +70 °C (ISO/IEC 11801, EN 50173-1, ANSI/TIA/EIA 568 C)
- Operation temperature: -20° C to +70 °C (ISO/IEC 11801, EN 50173-1, ANSI/TIA/EIA 568 C)
- Colour: Black RAL9005
- Color: black, RAL 9005
- Ports: 48
- Units: 1
- Category: CAT 6A

Logistics						
	Number (pcs)	Weight (kg)	Depth (cm)	Width (cm)	Height (cm)	cm³
Packaging Unit Carton	15	8.80	53.00	28.00	34.00	50,456.00
Packaging Unit Inside	1	0.59	5.00	53.00	18.00	4,770.00
Packaging Unit Single	1	0.59	5.00	53.00	18.00	4,770.00
Net single without Packaging	1	0.48	5.00	53.00	18.00	4,770.00

More images:



Safety notes

- Protect product from moisture

EU responsible person

EU based economic operator ensuring the product complies with the required regulations.

ASSMANN Electronic GmbH
Auf dem Schüffel 3
Lüdenscheid, Germany
<https://www.assmann.com>
info@assmann.com