

# DIGITUS Cat.6 U/UTP installation cable, 305 m, simplex, Eca

DK-1613-VH-305  
EAN 4016032324553



### CAT 6 U-UTP installation cable, 250 MHz Eca (EN 50575), AWG 23/1, 305 m paper box, sx, pu

The Digitus Cat 6 U/UTP installation cable is designed for use in the structured data center and the building cabling according to ISO/IEC 11801, DIN EN 50288-6-1, DIN EN 50173, IEC 60332-1. The cable is perfectly suitable for the transmission of both analog and digital data and also supports POE and POE+.

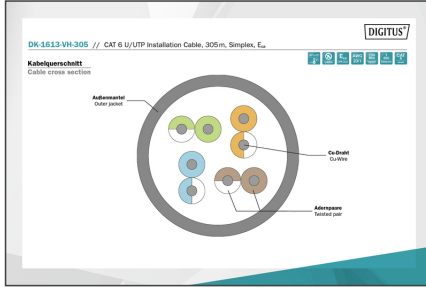
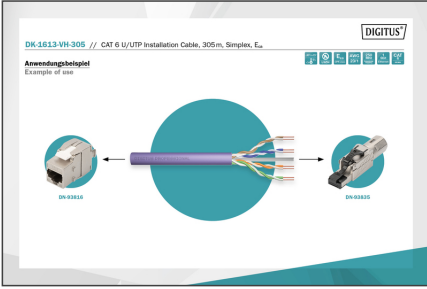
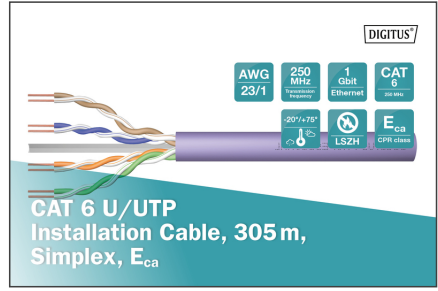
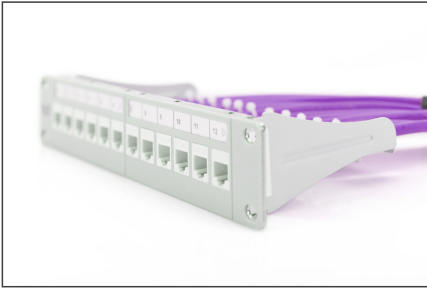
#### Future-oriented standards and high-end quality for your network.

- Physical properties:
- Conductor: Bare copper wire, AWG 23/1
- Insulation: HD-PE (High Density Polyethylene)
- Total number of insulated conductors: 8, twisted into 4 pairs
- Color code: Blue-white, orange-white, green-white, brown-white
- Shielding of the individual pairs: None
- Overall shielding: None
- Outer sheath: Eca to B2ca in accordance with EN 50575; LSZH
- Outer sheath thickness nominal): 0.5 mm (Eca); 0.6 mm (Dca); 1.0 mm (Cca); 1.0 mm (B2ca)
- Outer casing color: Violet (RAL 4005)
- Mechanical properties:
- Strain relief: 150N max.
- Dynamic bending radius: 8x AD mm min.
- Static bending radius: 4x AD mm min.
- Transport and storage temperature range: -20 °C to +60 °C

- Operating temperature range: -20 °C to +75 °C
- Installation temperature range: 0 °C to +50 °C
- Outer diameter simplex (nominal): 6.1 mm (Eca); 6.3 mm (Dca); 6.8 mm (Cca); 6.8 mm (B2ca)
- Weight (kg/km): 41 kg (Eca); 42 kg (Dca); 44 kg (Cca); 44 kg (B2ca)
- Electrical properties:
- Impedance: 100±5Ohm @ 1 - 250MHz
- Capacitance: 40 pF/m nominal @ 800 Hz
- Capacitance unbalance (pair-earth): 1.5 pF/m max. @ 1 KHz
- Insulation resistance: 5 GOhm x km min.
- Loop resistance: 147 Ohm/km max. (2% max. unbalanced resistance)
- Operating voltage: 72 Vdc max.
- Coupling attenuation: CA-Type 3
- Phase delay: 535 nS/100 m max.
- Time delay: 20 nS/100 m max.
- Isolation class: "b" according to EN 50174-2
- NVP: 69%
- Assortment: Twisted Pair Installation Cables
- Category: CAT 6
- Shielding: U-UTP, unshielded
- CPR: Eca
- Length: 305 m
- Color: violet
- Jacket: LSOH
- Structure: 4 x 2 AWG 23/1, solid twisted pair

| Logistics                    |              |             |            |            |             |           |
|------------------------------|--------------|-------------|------------|------------|-------------|-----------|
|                              | Number (pcs) | Weight (kg) | Depth (cm) | Width (cm) | Height (cm) | cm³       |
| Packaging Unit Carton        | 1            | 12.30       | 45.00      | 44.50      | 25.00       | 50,062.50 |
| Packaging Unit Inside        | 1            | 12.30       | 45.00      | 44.50      | 25.00       | 50,062.50 |
| Packaging Unit Single        | 1            | 12.30       | 45.00      | 44.50      | 25.00       | 50,062.50 |
| Net single without Packaging | 1            | 11.05       | 45.00      | 44.50      | 25.00       | 50,062.50 |

More images:



Technical specifications table with columns for Produktinformation, Physikalische Spezifikationen, Elektrische Eigenschaften, and Mechanische Eigenschaften.

Table titled 'Leistungsmerkmale Transmission Properties' showing parameters like AWG, AWG, NEXT, PR-NEXT, ACR, PL-ACR, FL, RL, RL-NEXT, and PR-RL-NEXT.

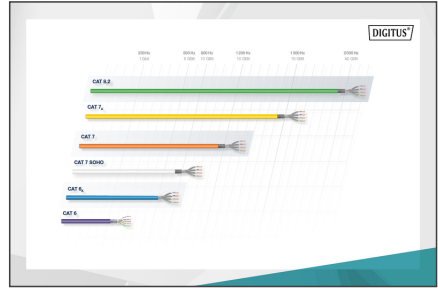


Table titled 'CEP Konformität' with columns for Besondere Merkmale, Leistungsmerkmale, and Zusätzliche Informationen, listing various cable types and their properties.

