

# DIGITUS CAT 6A, Class EA Patch Panel, shielded

**DN-91624S-EA**  
**EAN 4016032288428**



**CAT 6A Patch Panel, shielded, 1U, 24-port, 8P8C, RAL 7035, 483 mm (19"), grey RAL 7035**

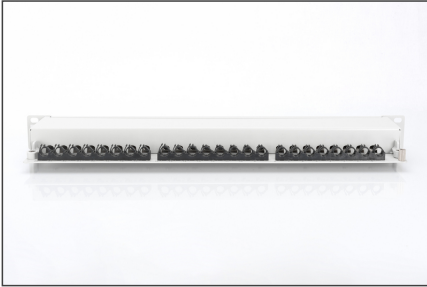
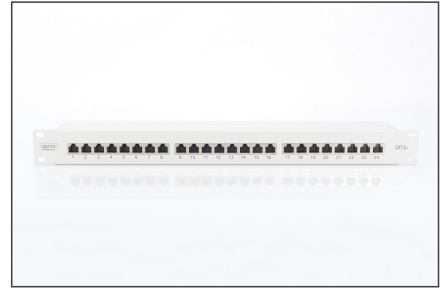
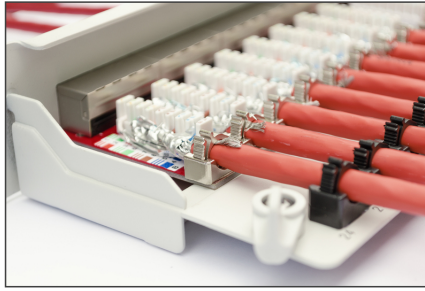
The DIGITUS® "DN-91624S-EA" CAT 6A Patch Panel is available as 24-port version and is made of 1.5 mm cold-rolled steel which makes it a sturdy Patch Panel for 19" rack mounting. It complies with the 802.3at PoE+ and the 802.3af PoE standard and is equipped with dust protection shutters.

**Future-oriented standards and high-end quality for your network.**

- Transmission characteristics: Category 6A, Class EA
- Application areas: Up to 500 MHz, 10GBase-T
- Standards: ISO/IEC 11801 2nd Ed., EN 50173-1, EIA/TIA 568-C, 802.3af, 802.3at PoE+
- General properties:
- Suitable for 483 mm (19") rack mounting
- RJ45 sockets, 8P8C
- Cable installation via LSA strips, color-coded according to EIA/TIA 568 A & B
- Cable fixation by means of quick latches
- Central earthing connection
- 360° shield contacting
- Integrated dust protection flaps
- Plastic labeling field
- CAT 6A Class EA for up to 500 MHz
- Mechanical properties:

- Housing material: 1.5 mm galvanized, cold-rolled steel according to EN1.4301, UNS S30400, AISI 304 and LMSAD110
- RJ45 socket material: ABS UL 94V-0
- Contact RJ45 socket: Nickel-plated phosphor bronze, 0.5 μ gold-plated contact
- RJ-45 shielding: Nickel-plated bronze
- LSA cutting clamp: Krone LSA+, UL 94V-2, galvanized phosphor bronze
- Earthing wire: Not included in the scope of delivery
- Printed circuit board: FR4, UL 94V-0
- Physical properties:
- Insertion force: 30N max. (IEC 60603-7-5)
- Tensile load: 7.7 kg between socket and plug
- Operating temperature: -20° C to +70 °C (ISO/IEC 11801, EN 50173-1, ANSI/TIA/EIA 568 C)
- Socket mating cycle: > 750 acc. to ISO/IEC 11801, IEC 60603-7-5
- Terminal: > 200 acc. to ISO/IEC 11801, IEC 60603-7-5
- Core receptacle: 22-26 AWG solid and stranded conductors
- Insulation resistance: > 500 MOhm
- Contact resistance: < 20 milliOhms
- Dielectric strength: 1000 VDC (contact/contact), 1500 VDC (contact/ground)
- Color: light grey, RAL 7035
- Ports: 24
- Units: 1
- Category: CAT 6A

Logistics						
	Number (pcs)	Weight (kg)	Depth (cm)	Width (cm)	Height (cm)	cm³
Packaging Unit Carton	8	14.50	58.00	32.00	34.00	63,104.00
Packaging Unit Inside	1	1.81	8.00	56.00	15.50	6,944.00
Packaging Unit Single	1	1.81	8.00	56.00	15.50	6,944.00
Net single without Packaging	1	1.70	8.00	56.00	15.50	6,944.00

**More images:****Safety notes**

- Protect product from moisture
- Avoid antistatic charging when installing the product
- Observe the specifications of the raw cable manufacturer during installation

**EU responsible person**

EU based economic operator ensuring the product complies with the required regulations.

ASSMANN Electronic GmbH  
Auf dem Schüffel 3  
Lüdenscheid, Germany  
<https://www.assmann.com>  
[info@assmann.com](mailto:info@assmann.com)