

# DIGITUS Fiber Optic Singlemode Patch Cord, LC / LC

**DK-2933-02**  
**EAN 4016032248927**



**FO patch cord, duplex, LC to LC SM OS2 09/125 μ, 2 m**  
 FO patch cord, duplex, LC to LC, SM OS2 09/125 μ, 2 m  
**Future-oriented standards and high-end quality for your network.**

- Duplex cable
- LSOH
- Connector with ceramic ferrule
- Cable diameter 2 mm
- Single packed with test-report

**Attributes**

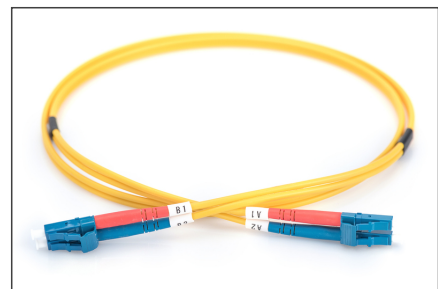
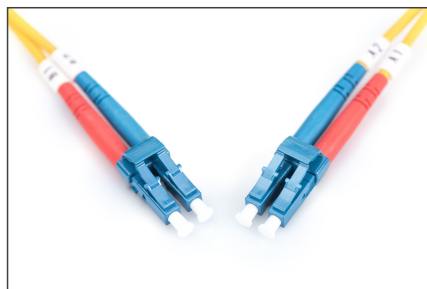
- Assortment: Fiber Optic Patch Cables

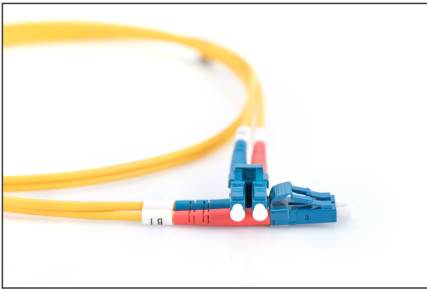
- Boot: single-color
- Cable diameter: 2 mm
- Cable type: I-VH 2E9/125μ
- Color cable: yellow
- Connector 1: LC
- Connector 2: LC
- Fiber class: OS2
- Fiber diameter: 9/125μ
- Mode: Singlemode
- Packaging: DIGITUS Polybag
- Length: 2 m

| Logistics                    |              |             |            |            |             |                 |
|------------------------------|--------------|-------------|------------|------------|-------------|-----------------|
|                              | Number (pcs) | Weight (kg) | Depth (cm) | Width (cm) | Height (cm) | cm <sup>3</sup> |
| Packaging Unit Carton        | 120          | 7.50        | 41.00      | 41.00      | 28.00       | 47,068.00       |
| Packaging Unit Inside        | 20           | 1.25        | 19.00      | 19.00      | 12.00       | 4,332.00        |
| Packaging Unit Single        | 1            | 0.06        | 17.00      | 17.00      | 1.00        | 289.00          |
| Net single without Packaging | 1            | 0.06        | 17.00      | 17.00      | 1.00        | 289.00          |

**More images:**

|                     |                 |          |      |      |
|---------------------|-----------------|----------|------|------|
| Part No.            | DK-2933-02      |          |      |      |
| Lenght              | 2 m             |          |      |      |
| Cable Type          | Duplex SM 9/125 | OS2 LSZH |      |      |
|                     | END A           | END B    |      |      |
| Connector Type      | LC              | LC       |      |      |
| Insertion Loss (dB) | 0.12            | 0.15     | 0.15 | 0.19 |
| Return Loss (dB)    | 51.8            | 53.2     | 51.1 | 50.7 |
| Q.C.                | PASS            |          |      |      |



**Safety notes**

- Avoid direct contact with light sources: Fiber optic cables, especially those with active light sources such as lasers (e.g. in optical communication systems), can emit dangerous radiation that can damage
- eyes. Take care never to look directly into the light of an optical fiber, even if the light source is invisible to the naked eye.
- When working with fiber optic cables, especially during tests or when working with lasers, protective goggles should always be worn to protect against harmful radiation.
- When plugging and unplugging the cable, only grasp the plug and do not pull directly on the cable.
- Do not kink or crush: Fiber optic cables are sensitive to mechanical stress.
- To protect cables from physical damage, they should be laid in special ducts or with protective materials
- Keep cable connectors clean: Fiber optic cables are sensitive to dust and dirt. Even small particles on the connectors can severely impair the signal quality.
- Cables should not be used in environments with extremely high or very low temperatures. Observe the product information on the maximum operating temperature of the cable
- Check cables regularly for visible damage such as cracks, kinks or signs of wear. Defective cables should be replaced immediately.

**EU responsible person**

EU based economic operator ensuring the product complies with the required regulations.

ASSMANN Electronic GmbH  
Auf dem Schüffel 3  
Lüdenscheid, Germany  
<https://www.assmann.com>  
[info@assmann.com](mailto:info@assmann.com)