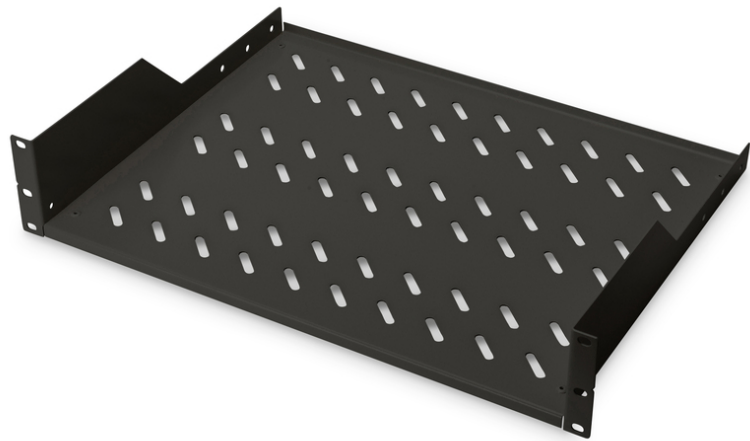


# DIGITUS Shelf for Fixed Installation in 483 mm (19") Cabinets

DN-19 TRAY-2-SW  
EAN 4016032222613



**2U fixed shelf for racks from 450 mm depth 88,5x483x352 mm, up to 25 kg, black (RAL 9005)**

The shelves for fixed mounting can be installed easy on the two front 483 mm (19") profile rails of your 483 mm (19") network- or server cabinet. Due to their stable, perforated steel sheet with a high load capacity, they are the optimal surface for components which are not 483 mm (19") suitable.

- Fixed installation
- sturdy, perforated steel sheet
- incl. fixing material

- 2-point fixing (front 19" profile rails)
- Color: black, RAL 9005
- Load capacity: 25 kg
- Mounting type: Fixed mounting
- Units: 2
- Inch form factor (IEC 60297): 482.6 mm (19")
- Suitable cabinet depth: ≥ 450 mm

**Package contents**

- Installation set (screws, cage nuts, washers)

| Logistics                    |              |             |            |            |             |                 |
|------------------------------|--------------|-------------|------------|------------|-------------|-----------------|
|                              | Number (pcs) | Weight (kg) | Depth (cm) | Width (cm) | Height (cm) | cm <sup>3</sup> |
| Packaging Unit Carton        | 5            | 11.66       | 50.00      | 51.00      | 39.50       | 100,725.00      |
| Packaging Unit Inside        | 1            | 2.33        | 49.30      | 27.40      | 9.50        | 12,832.80       |
| Packaging Unit Single        | 1            | 2.33        | 49.30      | 27.40      | 9.50        | 12,832.80       |
| Net single without Packaging | 1            | 1.67        | 49.30      | 27.40      | 9.50        | 12,832.80       |