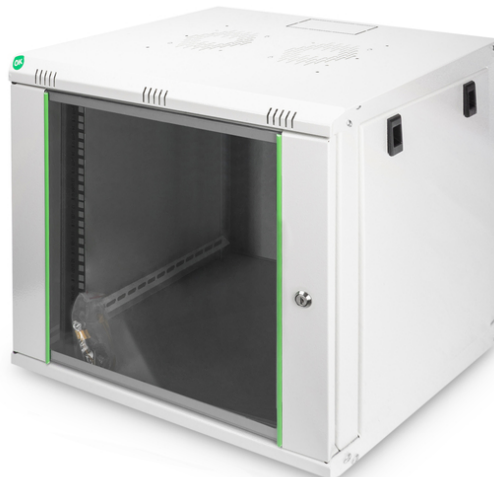


# DIGITUS Wall-mounted enclosure Dynamic Basic series - 600x450 mm (WxD)

DN-19 09-U-EC  
EAN 4016032221708



### 9U wall mounting cabinet, Dynamic 478x600x450 mm, color grey (RAL 7035)

The Dynamic series wall-mounted network cabinets have been developed for simple and particularly cost-optimized network expansion. The roof, base and rear panel of each cabinet are equipped with a pre-punched cable inlet. The roof chassis is also provided with a punched-out area to accommodate a fan module. Two pairs of galvanized 483 mm (19") profile rails, labelled with height units that can be read in both directions, are installed inside. These can be adjusted in depth. Each cabinet is a robust steel construction made of up to 1.5 mm thick sheet steel. The coloring takes the form of electrostatic powder coating in the standard colors grey (RAL 7035) and black (RAL 9005). Removable side panels and the lockable and removable front door improve accessibility. The door hinges can be changed. Wall mounting is carried out in two simple steps: The supplied mounting plate is screwed to the wall and then connected to the housing.

- Protection class IP20
- Lockable safety glass door with steel frame
- 235° door opening angle
- 1-point locking on the front door
- 483 mm (19") profile rails mounted at the front and rear inside the enclosure, galvanized
- 483 mm (19") profile rails are adjustable in depth and marked with the height unit

- 0.8 - 1.2 mm robust sheet steel with high load-bearing capacity, powder-coated
- Cable entry possible at the rear, roof and base (pre-punched cut-outs)
- Roof is prepared to accommodate a fan element (punched-out mounts)
- Ventilation slots for active and passive ventilation
- 4 earthing points (base, side panel and front door) with protective cap
- Installation depth for components min. - max.: 335 - 380 mm
- Cabinet type: Wall mounting cabinet
- Color: light grey, RAL 7035
- Depth: 450 mm
- Front door: Glass door, single opening
- Load capacity: 60 kg
- Side panels: Both sides
- Units: 9
- Width: 600 mm
- IP protection class: IP20
- Mounted: yes

#### Package contents

- Earthing cable set
- Installation set (screws, cage nuts, washers)
- 2 x key

Logistics						
	Number (pcs)	Weight (kg)	Depth (cm)	Width (cm)	Height (cm)	cm <sup>3</sup>
Packaging Unit Carton	1	17.00	52.00	48.00	62.00	154,752.00
Packaging Unit Inside	1	17.00	52.00	48.00	62.00	154,752.00
Packaging Unit Single	1	17.00	52.00	48.00	62.00	154,752.00
Net single without Packaging	1	15.00	52.00	48.00	62.00	154,752.00

More images:

