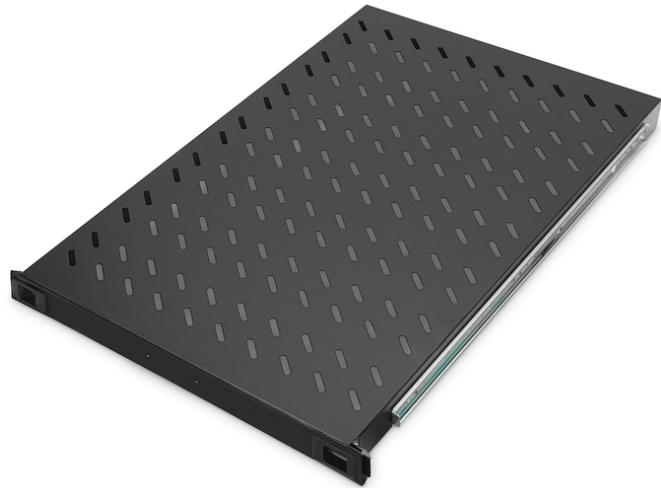


DIGITUS Extendible Shelf for 483 mm (19") Cabinets

DN-19 TRAY-2-1000SW
EAN 4016032180401



1U extendible shelf for 1000 mm depth racks 44x483x720 mm, up to 65 kg, black (RAL 9005)

The extendible Shelves are easy to install at the four 483 mm (19") profile rails of your 483 mm (19") cabinets. Due to the sturdy, perforated sheet steel with a high load capacity, they are the optimal surface for your network components. An attached handle can be installed to facilitate the extension of the shelf. Available in standard color grey (RAL 7035) and black (RAL 9005).

- For fixing at the four 483 mm (19") mounting profile rails
- Extractable (max. 54 cm), with handle bar
- Sturdy, perforated sheet steel
- Delivery with complete set of needed fixing material

- Adjustable mounting brackets MIN.-MAX.: 665 - 770 mm
- 4-point fixing (front- and rear 19" profile rails)
- Color: black, RAL 9005
- Load capacity: 65 kg
- Mounting type: Extendible
- Units: 1
- Inch form factor (IEC 60297): 482.6 mm (19")
- Suitable cabinet depth: ≥ 1000 mm

Package contents

- Installation set (screws, cage nuts, washers)
- Handle

Logistics						
	Number (pcs)	Weight (kg)	Depth (cm)	Width (cm)	Height (cm)	cm ³
Packaging Unit Carton	4	23.40	49.00	24.00	78.00	91,728.00
Packaging Unit Inside	1	5.85	78.00	50.00	5.50	21,450.00
Packaging Unit Single	1	5.85	78.00	50.00	5.50	21,450.00
Net single without Packaging	1	5.47	78.00	50.00	5.50	21,450.00

More images:

