

DIGITUS SOHO PRO wall-mounted enclosure - 483 mm (19") - 540x400 mm (WxD)

DN-49207
EAN 4016032493761



19" 12U wall mounting cabinet, SOHO PRO 595 x 540 x 400 mm, black

Whether in the home, office or for sub-distribution boards with limited space: With the compact 483 mm (19") solutions from the SOHO PRO series, you can install your network wherever you want. Available in four height units (4U, 7U, 9U, 12U), the wall-mounted enclosures are equipped with a full glass door and a cable entry in the top and bottom. A pair of galvanized 483 mm (19") profile rails labelled with legible height units are installed inside. These can be adjusted in depth. Each cabinet is a robust steel construction made of up to 1.5 mm thick sheet steel. The coloring takes the form of electrostatic powder coating in the standard colors grey (RAL 7035) and black (RAL 9005). The door hinges can be changed. The network enclosures are supplied unassembled in an optimized flat pack. Assembly takes place in just a few steps and is child's play thanks to the enclosed step-by-step instructions.

The DIGITUS® wall-mounted enclosure SOHO PRO series is characterized by its efficient delivery in an optimized flat pack and particularly user-friendly installation.

- Protection class IP20
- Lockable safety glass door
- 200° door opening angle
- 1-point locking on the front door

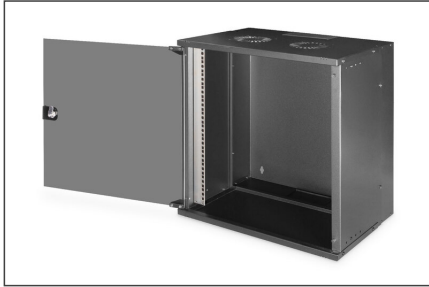
- 483 mm (19") profile rails mounted at the front inside the enclosure, galvanized
- 483 mm (19") profile rails are adjustable in depth
- 1.1 - 1.5 thick sheet steel with a high load-bearing capacity, powder-coated
- Cable entry with plastic cover in the roof and floor
- Ventilation slots for active and passive ventilation
- Installation depth for components max.: 327 mm
- Product dimensions (H x W x D): 595 x 540 x 400 mm
- Bočne ploče: Objе strane
- Boja: crna, RAL 9005
- Dubina: 400 mm
- Jedinice: 12
- Kapacitet opterećenja: 60 kg
- Prednja vrata: Staklena vrata, jednostruko otvaranje
- Širina: 540 mm
- Vrsta ormara: Zidni ormarić
- IP klasa zaštite: IP20
- Montirano: Ne

Package contents

- Installation set (screws, cage nuts, washers)
- 2x key
- 1x QIG

Logistics						
	Number (pcs)	Weight (kg)	Depth (cm)	Width (cm)	Height (cm)	cm ³
Packaging Unit Carton	1	13.69	60.00	58.00	15.00	52,200.00
Packaging Unit Inside	1	13.69	60.00	58.00	15.00	52,200.00
Packaging Unit Single	1	13.69	60.00	58.00	15.00	52,200.00
Net single without Packaging	0	12.63	40.00	54.00	59.20	127,872.00

More images:



DN-49207
Wall Mounting Cabinet 50Hx 19D
480mm (19") - 560 x 400mm (WxD)

DIGITUS

1. Take the CP plate out of the box.
2. Open the hinges with screws at the top.
3. Slide the bottom plate into the body in the direction of the arrows, opposite of the top plate into the gap of the body. The top plate locks in the body by the spring. Finally, the bottom plate has to be inserted. Please do not forget to insert the screws at the top and bottom. Please do not forget to insert the screws at the top and bottom.
4. Lay the body down and bottom plate to fit at the back side. Insert the top plate on top of the glass door from the hinge side of the top panel.

DN-49207
Wall Mounting Cabinet 50Hx 19D
480mm (19") - 560 x 400mm (WxD)

DIGITUS

5. Place the top panel with the hole in the direction of the arrow. The arrow on the outside of the top panel is to be aligned to the upper edge of the body. Insert the top panel into the gap of the body. Insert the screws at the top and bottom.
6. Put the cabinet on the floor. The bottom panel is to be placed on the ground. Insert the screws at the bottom and the top of the top panel.
7. Check the CP code and compare it with the installation video. Your glass cabinet is ready to use.

