

# DIGITUS SOHO PRO wall-mounted enclosure - 483 mm (19") - 540x400 mm (WxD)

DN-49207  
 EAN 4016032493761



**19" 12U wall mounting cabinet, SOHO PRO 595 x 540 x 400 mm, black**

Whether in the home, office or for sub-distribution boards with limited space: With the compact 483 mm (19") solutions from the SOHO PRO series, you can install your network wherever you want. Available in four height units (4U, 7U, 9U, 12U), the wall-mounted enclosures are equipped with a full glass door and a cable entry in the top and bottom. A pair of galvanized 483 mm (19") profile rails labelled with legible height units are installed inside. These can be adjusted in depth. Each cabinet is a robust steel construction made of up to 1.5 mm thick sheet steel. The coloring takes the form of electrostatic powder coating in the standard colors grey (RAL 7035) and black (RAL 9005). The door hinges can be changed. The network enclosures are supplied unassembled in an optimized flat pack. Assembly takes place in just a few steps and is child's play thanks to the enclosed step-by-step instructions.

**The DIGITUS® wall-mounted enclosure SOHO PRO series is characterized by its efficient delivery in an optimized flat pack and particularly user-friendly installation.**

- Protection class IP20
- Lockable safety glass door
- 200° door opening angle
- 1-point locking on the front door

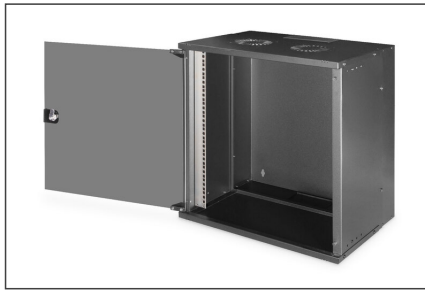
- 483 mm (19") profile rails mounted at the front inside the enclosure, galvanized
- 483 mm (19") profile rails are adjustable in depth
- 1.1 - 1.5 thick sheet steel with a high load-bearing capacity, powder-coated
- Cable entry with plastic cover in the roof and floor
- Ventilation slots for active and passive ventilation
- Installation depth for components max.: 327 mm
- Product dimensions (H x W x D): 595 x 540 x 400 mm
- Cabinet type: Wall mounting cabinet
- Color: black, RAL 9005
- Depth: 400 mm
- Front door: Glass door, single opening
- Load capacity: 60 kg
- Side panels: Both sides
- Units: 12
- Width: 540 mm
- IP protection class: IP20
- Mounted: no

**Package contents**

- 2x key
- 1x QIG

Logistics						
	Number (pcs)	Weight (kg)	Depth (cm)	Width (cm)	Height (cm)	cm <sup>3</sup>
Packaging Unit Carton	1	13.69	60.00	58.00	15.00	52,200.00
Packaging Unit Inside	1	13.69	60.00	58.00	15.00	52,200.00
Packaging Unit Single	1	13.69	60.00	58.00	15.00	52,200.00
Net single without Packaging	0	12.63	40.00	54.00	59.20	127,872.00

More images:



**DN-49207**  
Wall Mounting Cabinet SOHO PRO  
483mm (19") - 560x400mm (WD)

**DIGITUS**

- Slide the top panel into the body in the direction of the arrows. Pay attention that the corner of the top panel does not hit the spring in the upper back of the body. Remove the top edge part of the glass door in the large hole of the top plate. Insert the panel (2) in the panel to the panel gap of the body. Assemble the bottom panel to the body by 4 screws.
- Put the bottom panel into the body. Be careful when mounting the glass door. Check the alignment of the bottom panel (clockwise) and the recesses of the top panel assembly.
- Slide the side panel into the body. Use the provided screws. Your distributor is ready to help.

**DN-49207**  
Wall Mounting Cabinet SOHO PRO  
483mm (19") - 560x400mm (WD)

**DIGITUS**

- Take the top panel out of the body.
- Clean the top panel with a soft cloth.
- Slide the top panel into the body in the direction of the arrows. Pay attention that the corner of the top panel does not hit the spring in the upper back of the body. Remove the top edge part of the glass door in the large hole of the top plate. Insert the panel (2) in the panel to the panel gap of the body. Assemble the bottom panel to the body by 4 screws. Be careful when mounting the glass door. Check the alignment of the bottom panel (clockwise) and the recesses of the top panel assembly.
- Slide the side panel into the body. Use the provided screws. Your distributor is ready to help.

