

# DIGITUS SOHO PRO wall-mounted enclosure - 483 mm (19") - 540x400 mm (WxD)

DN-49206  
EAN 4016032493754



## 19" 12U wall mounting cabinet, SOHO PRO 595 x 540 x 400 mm, grey

Whether in the home, office or for sub-distribution boards with limited space: With the compact 483 mm (19") solutions from the SOHO PRO series, you can install your network wherever you want. Available in four height units (4U, 7U, 9U, 12U), the wall-mounted enclosures are equipped with a full glass door and a cable entry in the top and bottom. A pair of galvanized 483 mm (19") profile rails labelled with legible height units are installed inside. These can be adjusted in depth. Each cabinet is a robust steel construction made from sheet steel up to 1.5 mm thick. The coloring takes the form of electrostatic powder coating in the standard colors grey (RAL 7035) and black (RAL 9005). The door hinges can be changed. The network enclosures are supplied unassembled in an optimized flat pack. Assembly takes place in just a few steps and is child's play thanks to the enclosed step-by-step instructions.

**The DIGITUS® wall-mounted enclosure SOHO PRO series is characterized by its efficient delivery in an optimized flat pack and particularly user-friendly installation.**

- Protection class IP20
- Lockable safety glass door
- 200° door opening angle
- 1-point locking on the front door

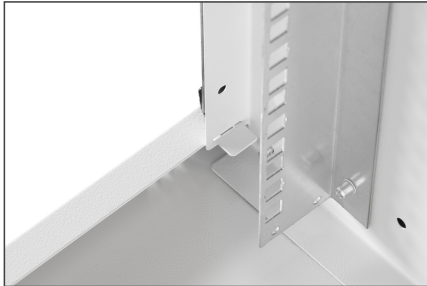
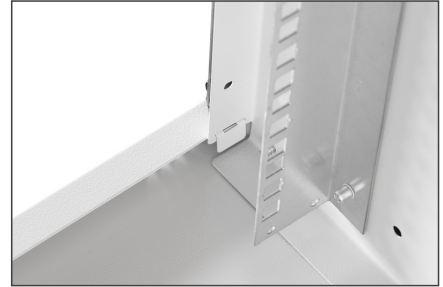
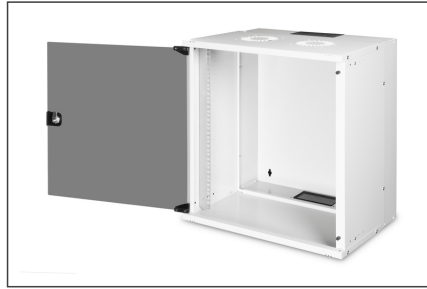
- 483 mm (19") profile rails mounted at the front inside the enclosure, galvanized
- 483 mm (19") profile rails are adjustable in depth
- 1.1 - 1.5 thick sheet steel with a high load-bearing capacity, powder-coated
- Cable entry with plastic cover in the roof and floor
- Ventilation slots for active and passive ventilation
- Installation depth for components max.: 327 mm
- Product dimensions (H x W x D): 595 x 540 x 400 mm
- Bočne ploče: Objе strane
- Boja: svijetlo siva, RAL 7035
- Dubina: 400 mm
- Jedinice: 12
- Kapacitet opterećenja: 60 kg
- Prednja vrata: Staklena vrata, jednostruko otvaranje
- Širina: 540 mm
- Vrsta ormara: Zidni ormarić
- IP klasa zaštite: IP20
- Montirano: Ne

### Package contents

- Installation set (screws, cage nuts, washers)
- 2x key
- 1x QIG

Logistics						
	Number (pcs)	Weight (kg)	Depth (cm)	Width (cm)	Height (cm)	cm <sup>3</sup>
Packaging Unit Carton	1	13.68	60.00	58.00	15.00	52,200.00
Packaging Unit Inside	1	13.68	60.00	58.00	15.00	52,200.00
Packaging Unit Single	1	13.68	60.00	58.00	15.00	52,200.00
Net single without Packaging	0	12.63	40.00	54.00	59.50	128,520.00

More images:



**DN-43206**  
Wall Mounting Cabinet SOHO PRO  
483mm (19") - 540x400mm (WD)

**DIGITUS**

- Slide the top panel into the body of the cabinet out of the box.
- Open the top panel and remove the top panel from the body.
- Slide the bottom panel into the body in the direction of the arrows. As soon as the screws, insert the screws of the bottom panel into the panel of the body.
- Fix the bottom panel to the body by the screws. Change the screws placed in the holes needs to be mounted to all screws which are shown. Then, fix the screws. Be careful! Screws must be mounted in the correct direction. For the correct mounting, plastic door stopper from needs to be mounted before for the top edge of the panel door.

**DN-43206**  
Wall Mounting Cabinet SOHO PRO  
483mm (19") - 540x400mm (WD)

**DIGITUS**

- Slide the top panel into the body in the direction of the arrows. The direction of mounting of the top panel has to be identical to the color code of the body. Insert the screws of the bottom panel into the holes. Be careful! Insert screws of the top panel in the panel gap of the body.
- Assemble the bottom panel to the body by 4 screws.
- Put the cabinet on the floor. The bottom panel needs the screws. Check the screws of the bottom panel thoroughly and the screws of the top panel assembly.
- Check the QR code and camera to check the installation video. Your SOHO cabinet is ready to use.