

DIGITUS SOHO PRO wall-mounted enclosure - 483 mm (19") - 540x400 mm (WxD)

DN-49203
EAN 4016032493716



19" 7U wall mounting cabinet, SOHO PRO 370 x 540 x 400 mm, black

Whether in the home, office or for sub-distribution boards with limited space: With the compact 483 mm (19") solutions from the SOHO PRO series, you can install your network wherever you want. Available in four height units (4U, 7U, 9U, 12U), the wall-mounted enclosures are equipped with a full glass door and a cable entry in the top and bottom. A pair of galvanized 483 mm (19") profile rails labelled with legible height units are installed inside. These can be adjusted in depth. Each cabinet is a robust steel construction made of up to 1.5 mm thick sheet steel. The coloring takes the form of electrostatic powder coating in the standard colors grey (RAL 7035) and black (RAL 9005). The door hinges can be changed. The network enclosures are supplied unassembled in an optimized flat pack. Assembly takes place in just a few steps and is child's play thanks to the enclosed step-by-step instructions.

The DIGITUS® wall-mounted enclosure SOHO PRO series is characterized by its efficient delivery in an optimized flat pack and particularly user-friendly installation.

- Protection class IP20
- Lockable safety glass door
- 200° door opening angle
- 1-point locking on the front door

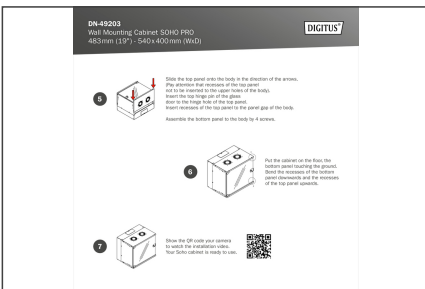
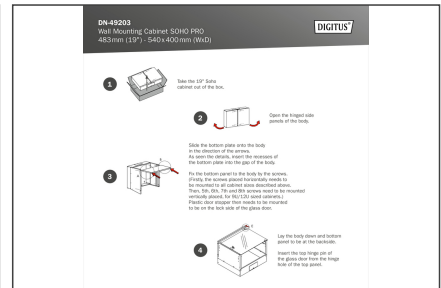
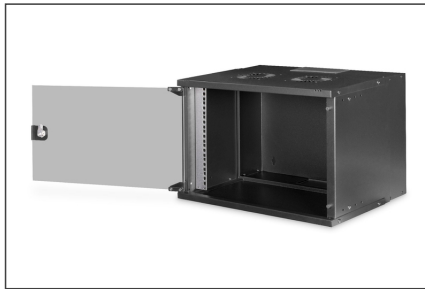
- 483 mm (19") profile rails mounted at the front inside the enclosure, galvanized
- 483 mm (19") profile rails are adjustable in depth
- 1.1 - 1.5 thick sheet steel with a high load-bearing capacity, powder-coated
- Cable entry with plastic cover in the roof and floor
- Ventilation slots for active and passive ventilation
- Installation depth for components max.: 327 mm
- Product dimensions (H x W x D): 370 x 540 x 400 mm
- Bočne ploče: Objе strane
- Boja: crna, RAL 9005
- Dubina: 400 mm
- Jedinice: 7
- Kapacitet opterećenja: 60 kg
- Prednja vrata: Staklena vrata, jednostruko otvaranje
- Širina: 540 mm
- Vrsta ormara: Zidni ormarić
- IP klasa zaštite: IP20
- Montirano: Ne

Package contents

- Installation set (screws, cage nuts, washers)
- 2x key
- 1x QIG

Logistics						
	Number (pcs)	Weight (kg)	Depth (cm)	Width (cm)	Height (cm)	cm ³
Packaging Unit Carton	1	9.88	58.00	38.50	17.50	39,077.50
Packaging Unit Inside	1	9.88	58.00	38.50	17.50	39,077.50
Packaging Unit Single	1	9.88	58.00	38.50	17.50	39,077.50
Net single without Packaging	0	9.11	40.00	54.00	37.00	79,920.00

More images:



DN-49203
Wall Mounting Cabinet S0HD PRO
483mm (13") - 540x400mm (WxD)



1 Take the 13" Euro cabinet out of the box.

2 Slide the top panel onto the body in the direction of the arrows. The arrows show the direction of the top panel and to be inserted to the upper holes of the body. Insert the top panel of the glass door in the right-hand side of the panel. Insert the top panel of the panel glass at the body. Assemble the bottom panel to the body by 4 screws.

3 Put the cabinet on the floor. The cabinet must be standing on the ground. Check the position of the bottom panel (horizontal and the position of the top panel cabinet).



DN-49203
Wall Mounting Cabinet S0HD PRO
483mm (13") - 540x400mm (WxD)



1 Take the 13" Euro cabinet out of the box.

2 Clean the top panel glass. Insert the top panel of the glass door into the top of the body.

3 Put the cabinet on the floor. The cabinet must be standing on the ground. Check the position of the bottom panel (horizontal and the position of the top panel cabinet).

4 Take the QR code your camera to view the explanation video. Your cabinet is ready to use.