

DIGITUS SOHO PRO wall-mounted enclosure - 483 mm (19") - 540x400 mm (WxD)

DN-49203
EAN 4016032493716



19" 7U wall mounting cabinet, SOHO PRO 370 x 540 x 400 mm, black

Whether in the home, office or for sub-distribution boards with limited space: With the compact 483 mm (19") solutions from the SOHO PRO series, you can install your network wherever you want. Available in four height units (4U, 7U, 9U, 12U), the wall-mounted enclosures are equipped with a full glass door and a cable entry in the top and bottom. A pair of galvanized 483 mm (19") profile rails labelled with legible height units are installed inside. These can be adjusted in depth. Each cabinet is a robust steel construction made of up to 1.5 mm thick sheet steel. The coloring takes the form of electrostatic powder coating in the standard colors grey (RAL 7035) and black (RAL 9005). The door hinges can be changed. The network enclosures are supplied unassembled in an optimized flat pack. Assembly takes place in just a few steps and is child's play thanks to the enclosed step-by-step instructions.

The DIGITUS® wall-mounted enclosure SOHO PRO series is characterized by its efficient delivery in an optimized flat pack and particularly user-friendly installation.

- Protection class IP20
- Lockable safety glass door
- 200° door opening angle
- 1-point locking on the front door

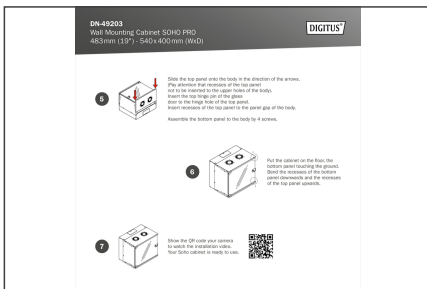
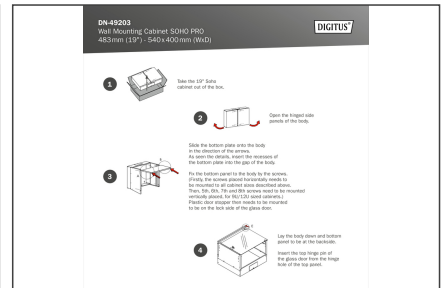
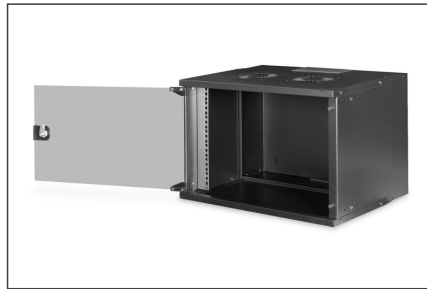
- 483 mm (19") profile rails mounted at the front inside the enclosure, galvanized
- 483 mm (19") profile rails are adjustable in depth
- 1.1 - 1.5 thick sheet steel with a high load-bearing capacity, powder-coated
- Cable entry with plastic cover in the roof and floor
- Ventilation slots for active and passive ventilation
- Installation depth for components max.: 327 mm
- Product dimensions (H x W x D): 370 x 540 x 400 mm
- Cabinet type: Wall mounting cabinet
- Color: black, RAL 9005
- Depth: 400 mm
- Front door: Glass door, single opening
- Load capacity: 60 kg
- Side panels: Both sides
- Units: 7
- Width: 540 mm
- IP protection class: IP20
- Mounted: no

Package contents

- 2x key
- 1x QIG

Logistics						
	Number (pcs)	Weight (kg)	Depth (cm)	Width (cm)	Height (cm)	cm³
Packaging Unit Carton	1	9.88	58.00	38.50	17.50	39,077.50
Packaging Unit Inside	1	9.88	58.00	38.50	17.50	39,077.50
Packaging Unit Single	1	9.88	58.00	38.50	17.50	39,077.50
Net single without Packaging	0	9.11	40.00	54.00	37.00	79,920.00

More images:



DN-49203
Wall Mounting Cabinet S040 PRO
483mm (137") - 540x400mm (WxD)

1 Slide the top panel onto the body in the direction of the arrows. The arrows show the direction of the top panel and to be inserted in the upper holes of the body. Insert the top panel into the glass door in the right-hand side of the panel. Insert the top panel into the panel gap at the body. Assemble the bottom panel to the body by 4 screws.

2 Put the cabinet on the floor. The cabinet must be standing on the ground. Check the position of the bottom panel (downward) and the position of the top panel (upward).

3 Scan the QR code your camera to check the installation video. Your cabinet is ready to use.



DN-49203
Wall Mounting Cabinet S040 PRO
483mm (137") - 540x400mm (WxD)



- 1 Take the 137" extra cabinet out of the box.
- 2 Clean the top panel and bottom panel of the body.
- 3 Slide the bottom plate into the body in the direction of the arrows. The arrows show the direction of the bottom plate into the gap of the body. The top panel is inserted into the body by the screws. If using the optional optional bottom panel, the screws of the optional bottom panel must be inserted into the panel. Do not use the screws of the optional bottom panel. Check that the screws are inserted into the panel. Check that the screws are inserted into the panel.
- 4 Lay the body down and bottom panel to lay it on the floor. Insert the top panel of the glass door from the right-hand side of the glass door.