

DIGITUS SOHO PRO wall-mounted enclosure - 483 mm (19") - 540x400 mm (WxD)

DN-49202
EAN 4016032493709



19" 7U wall mounting cabinet, SOHO PRO 370 x 540 x 400 mm, grey

Whether in the home, office or for sub-distribution boards with limited space: With the compact 483 mm (19") solutions from the SOHO PRO series, you can install your network wherever you want. Available in four height units (4U, 7U, 9U, 12U), the wall-mounted enclosures are equipped with a full glass door and a cable entry in the top and bottom. A pair of galvanized 483 mm (19") profile rails labelled with legible height units are installed inside. These can be adjusted in depth. Each cabinet is a robust steel construction made of up to 1.5 mm thick sheet steel. The coloring takes the form of electrostatic powder coating in the standard colors grey (RAL 7035) and black (RAL 9005). The door hinges can be changed. The network enclosures are supplied unassembled in an optimized flat pack. Assembly takes place in just a few steps and is child's play thanks to the enclosed step-by-step instructions.

The DIGITUS® wall-mounted enclosure SOHO PRO series is characterized by its efficient delivery in an optimized flat pack and particularly user-friendly installation.

- Protection class IP20
- Lockable safety glass door
- 200° door opening angle
- 1-point locking on the front door

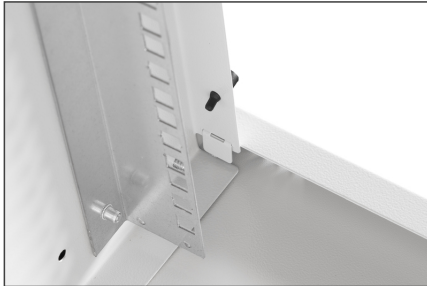
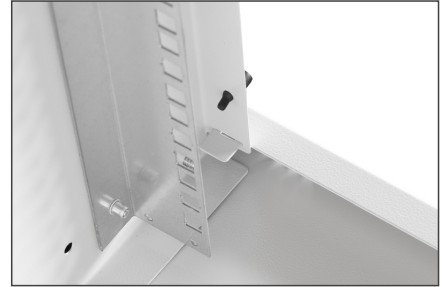
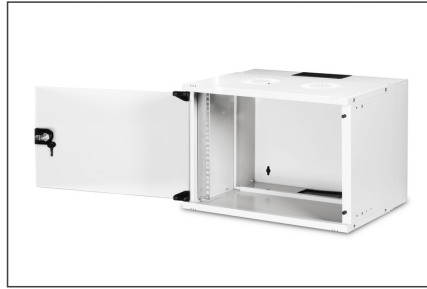
- 483 mm (19") profile rails mounted at the front inside the enclosure, galvanized
- 483 mm (19") profile rails are adjustable in depth
- 1.1 - 1.5 thick sheet steel with a high load-bearing capacity, powder-coated
- Cable entry with plastic cover in the roof and floor
- Ventilation slots for active and passive ventilation
- Installation depth for components max.: 327 mm
- Product dimensions (H x W x D): 370 x 540 x 400 mm
- Bočne ploče: Objе strane
- Boja: svijetlo siva, RAL 7035
- Dubina: 400 mm
- Jedinice: 7
- Kapacitet opterećenja: 60 kg
- Prednja vrata: Staklena vrata, jednostruko otvaranje
- Širina: 540 mm
- Vrsta ormara: Zidni ormarić
- IP klasa zaštite: IP20
- Montirano: Ne

Package contents

- Installation set (screws, cage nuts, washers)
- 2x key
- 1x QIG

Logistics						
	Number (pcs)	Weight (kg)	Depth (cm)	Width (cm)	Height (cm)	cm ³
Packaging Unit Carton	1	9.88	58.00	38.50	17.50	39,077.50
Packaging Unit Inside	1	9.88	58.00	38.50	17.50	39,077.50
Packaging Unit Single	1	9.88	58.00	38.50	17.50	39,077.50
Net single without Packaging	0	9.11	40.00	54.00	37.00	79,920.00

More images:



DN-48002
Wall Mounting Cabinet SOHO PRO
483mm (19") - 540x400mm (WD)

- Slide the top panel onto the body in the direction of the arrows. The elements that receive the screws must be inserted into the upper holes of the body. Insert the top edge of the glass into the top edge of the door. Insert the top of the top panel in the panel gap of the body. Assemble the bottom panel to the body by 4 screws.
- Put the cabinet on the floor. The cabinet should be placed on the floor. Check the recesses of the bottom panel downwards and the recesses of the top panel upwards.
- Show the QR code your camera or mobile the installation manual. Your SOHO cabinet is ready to use.

DN-48002
Wall Mounting Cabinet SOHO PRO
483mm (19") - 540x400mm (WD)

- Use the 19" Soho cabinet ear of the body.
- Slide the bottom plate onto the body in the direction of the arrows. At the same time, insert the recesses of the bottom plate into the gap of the body.
- Slide the bottom panel to the body by 4 screws. During the screw process, the screws must be inserted into the upper holes of the body. Check the recesses of the bottom panel downwards and the recesses of the top panel upwards. Please check whether there is no obstruction in the top edge of the glass plate.
- Let the body down and bottom panel to the floor. Insert the top edge of the glass plate into the top edge of the body.