

DIGITUS SOHO PRO wall-mounted enclosure - 483 mm (19") - 540x400 mm (WxD)

DN-49200
EAN 4016032493686



19" 4U wall mounting cabinet, SOHO PRO 240 x 540 x 400 mm, grey

Whether in the home, office or for sub-distribution boards with limited space: With the compact 483 mm (19") solutions from the SOHO PRO series, you can install your network wherever you want. Available in four height units (4U, 7U, 9U, 12U), the wall-mounted enclosures are equipped with a full glass door and a cable entry in the top and bottom. A pair of galvanized 483 mm (19") profile rails labelled with legible height units are installed inside. These can be adjusted in depth. Each cabinet is a robust steel construction made of up to 1.5 mm thick sheet steel. The coloring takes the form of electrostatic powder coating in the standard colors grey (RAL 7035) and black (RAL 9005). The door hinges can be changed. The network enclosures are supplied unassembled in an optimized flat pack. Assembly takes place in just a few steps and is child's play thanks to the enclosed step-by-step instructions.

The DIGITUS® wall-mounted enclosure SOHO PRO series is characterized by its efficient delivery in an optimized flat pack and particularly user-friendly installation.

- Protection class IP20
- Lockable safety glass door
- 200° door opening angle
- 1-point locking on the front door

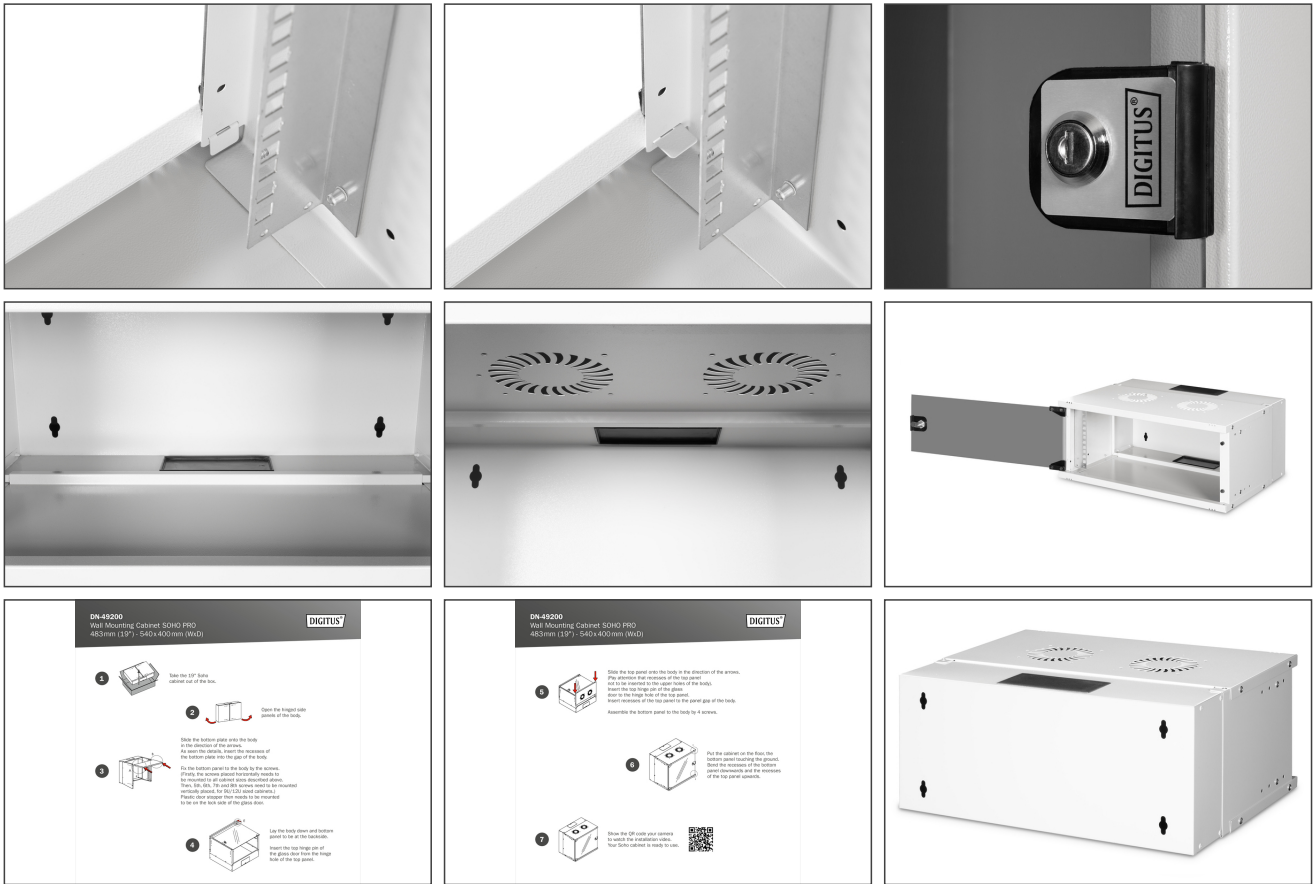
- 483 mm (19") profile rails mounted at the front inside the enclosure, galvanized
- 483 mm (19") profile rails are adjustable in depth
- 1.1 - 1.5 thick sheet steel with a high load-bearing capacity, powder-coated
- Cable entry with plastic cover in the roof and floor
- Ventilation slots for active and passive ventilation
- Installation depth for components max.: 327 mm
- Product dimensions (H x W x D): 240 x 540 x 400 mm
- Cabinet type: Wall mounting cabinet
- Color: light grey, RAL 7035
- Depth: 400 mm
- Front door: Glass door, single opening
- Load capacity: 60 kg
- Side panels: Both sides
- Units: 4
- Width: 540 mm
- IP protection class: IP20
- Mounted: no

Package contents

- Installation set (screws, cage nuts, washers)
- 2x key
- 1x QIG

Logistics						
	Number (pcs)	Weight (kg)	Depth (cm)	Width (cm)	Height (cm)	cm ³
Packaging Unit Carton	1	7.56	58.00	31.50	17.50	31,972.50
Packaging Unit Inside	1	7.56	58.00	31.50	17.50	31,972.50
Packaging Unit Single	1	7.56	58.00	31.50	17.50	31,972.50
Net single without Packaging	0	7.13	40.00	54.00	24.00	51,840.00

More images:



DI-48200
Wall Mounting Cabinet SOHO PRO
483mm (19") - 540x400mm (WxD)

- 1 Take the ESP Screws
center out of the box.
- 2 Open the top and bottom panels of the body.
- 3 Slide the bottom plate into the body
in the direction of the arrows.
As soon as you hear the click, insert the excess of
the bottom plate into the gap of the body.
- 4 Fix the bottom panel to the body by the screws.
If you do not have screws, you can use the screws
provided in the kit. The screws must be inserted
into the holes in the bottom panel.
Please do not forget that screws to be inserted
to be on the top side of the plate.
- 5 Lay the body down and bottom
panel to be on the outside.
Insert the top hinge pin of
the plate into the hinge
hole of the top panel.

DI-48200
Wall Mounting Cabinet SOHO PRO
483mm (19") - 540x400mm (WxD)

- 1 Slide the top panel onto the body in the direction of the arrows.
Be sure that the excess of the top panel
can be inserted into the gap of the body.
Insert the top hinge pin of the plate
into the hinge hole of the top panel.
Insert the excess of the top panel to the panel gap of the body.
- 2 Assemble the bottom panel to the body by 4 screws.
- 3 Put the cabinet on the floor the
bottom plate facing the ground.
Check the excess of the bottom
panel downwards and the excess
of the top panel upwards.
- 4 Show the QR code your camera
to check the installation manual.
Your SOHO cabinet is ready to use.