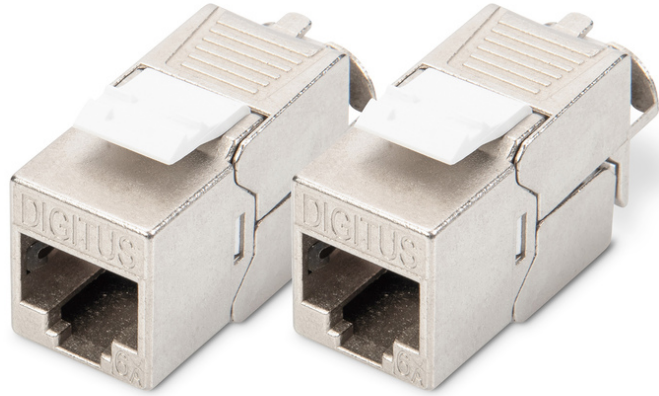


DIGITUS CAT 6A Keystone Module, shielded, toolfree - 2 pcs.

DN-93615-2
EAN 4016032490555



CAT 6A Keystone Jack, shielded, 2 pcs. tool free connection

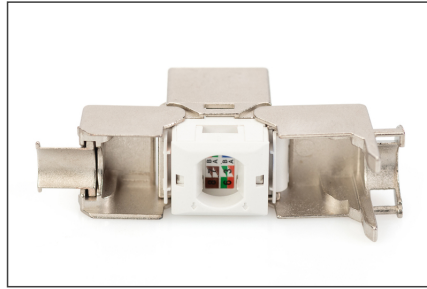
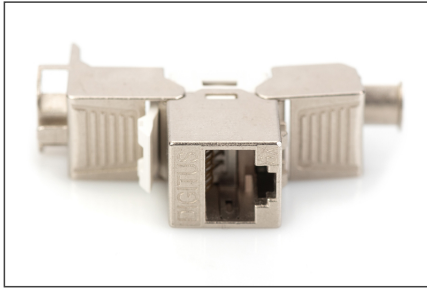
The shielded cat. 6A keystone module set DN-93615 from DIGITUS® impresses with future-oriented standards and high-end quality for your network. The compact design makes series installation possible in a 483 mm (19") 1U panel. Tool-free installation uses LSA rails color-coded in accordance with EIA/TIA 568 A&B. Its compact design also means that the module fits in design-compatible modular junction boxes.

Quick and safe wire terminations without any special tool

- Category 6A 10GBase-T, 500 MHz
- ISO/IEC 11801 3rd Edition, EN 50173-1
- Suitable for PoE/PoE+/4PPoE (IEEE 802.3af, 802.3at, 802.3bt)
- Suitable for modular patch panel and modular wall outlet installation.
- RJ45-Jack, 8P8C
- Cable installation via insulation-displacement connectors, color coded in accordance with EIA/TIA 568 A & B
- Cable grip and cable fixation using intelligent cable manager
- Tool-free mounting connection
- 360° shield contact

- Case material: Zinc die-cast – nickel-plated
- Contact material: Phosphor bronze
- Contact coating: Nickel, gold-plated 0.5 μ
- Insertion force: Max. 30N (as per IEC 60603-7-51)
- Holding force: 7.7 kg between jack and plug
- Operating temperature range: -20 °C to +70 °C (ISO/IEC 11801, ANSI/TIA 568 C.2)
- Mating cycles: ≥ 750 (ISO/IEC 11801, IEC 60603-7-51)
- Copper cable diameter: AWG (26/7 – 22/1), stranded and solid wire
- Tested with AWG 22/1 solid installation cable
- (DIGITUS® DK-174X-A-VH-X; AWG 22/1 cat. 7A installation cable)
- Dielectric strength: 1000 VDC (contact/contact), 1500 VDC (contact/ground)
- Tool-free installation using LSA insulation-displacement connectors color coded in accordance with EIA/TIA 568 A & B
- Intelligent cable manager (resealable)
- CAT 6A Keystone Module-set: 2 pcs.
- Dimensions (HxWxD): 21.0 x 14.5 x 34.5 mm
- Weight: 19.5 g
- Category: CAT 6A

Logistics						
	Number (pcs)	Weight (kg)	Depth (cm)	Width (cm)	Height (cm)	cm³
Packaging Unit Carton	50	1.23	23.00	23.00	7.50	3,967.50
Packaging Unit Inside	1	0.02	0.00	0.00	0.00	0.00
Packaging Unit Single	1	0.02	9.00	9.00	2.10	170.10
Net single without Packaging	0	0.00	3.10	1.50	2.10	9.77

More images:**Safety notes**

- Protect product from moisture
- Avoid antistatic charging when installing the product
- Observe the specifications of the raw cable manufacturer during installation

EU responsible person

EU based economic operator ensuring the product complies with the required regulations.

ASSMANN Electronic GmbH
Auf dem Schüffel 3
Lüdenscheid, Germany
<https://www.assmann.com>
info@assmann.com