

DIGITUS 16-Port Gigabit PoE Networkswitch, 19 Zoll, unmanaged, 2 Uplink Ports, SFP

DN-95358
EAN 4016032485445



16+2 Port GE + 2GE SFP Uplink PoE Switch 16+2 Port 10/100/1000 Mbps + 2GE SFP PoE Switch

“The DN-95358 PoE Switch is a 16-port 10/100/1000Mbps PoE + 2G Gigabit RJ45 +2 Gigabit SFP PoE switch. □The PoE ports can automatically detect IEEE 802.3af/at-compliant Powered Devices (PDs) and supply them with power. □Your network is able to extend power and data transmission via a single cable to locations where there are no power lines or outlets □that you could use to install devices such as APs, IP cameras or IP phones and the like.□The PoE switch offers a simple, cost-effective and non-blocking wire-speed performance□ with 11-inch metal form for rack installation in office or department networks.”

Key function: VLAN & CCTV & PD-Alive

- Interface: 16* 10/100/1000Mbps RJ45 port
- 2*10/100/1000Mbps RJ45 port
- 2*1000Mbps SFP Slot
- Standard: IEEE802.3, IEEE802.3u, IEEE802.3ab, IEEE802.3z, IEEE802.3x
- Corresponds to IEEE802.3af/at Power over Ethernet
- PSE Power on RJ45: Mode A 1/2(+), 3/6(-), Mode B 4/5(+), 7/8(-)
- Supports PoE power up to 32W for each PoE port
- PoE power budget: 185W
- Energy supply: 200W
- Automatic detection of power supply device
- Remote supply of power and data up to 100 m

- Flow control for full duplex operation and back pressure for half duplex operation
- Supports VLAN and CCTV function
- 8K MAC address, automatic address learning and address aging
- Supports energy-efficient Ethernet (EEE) function IEEE802.3az
- Supports the PD alive function
- LED: PWR, PoE, LINK/ACT, PoE Max
- Maximum packet length: 8K
- Transmission mode: Store and forward
- Switching capacity: 40Gps
- Packet forwarding rate: 29.76Mpps
- Packet buffer: 4M bit
- Fan: 1*Fan
- Weight: < 4.2Kg
- Dimensions (L*W*G): 280*180*44mm

Attributes

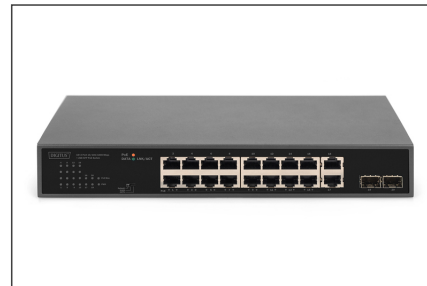
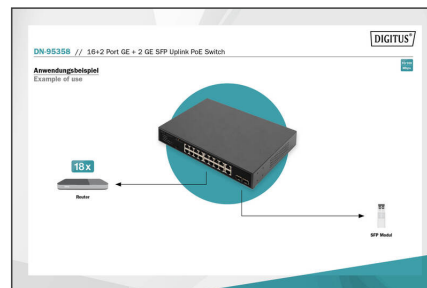
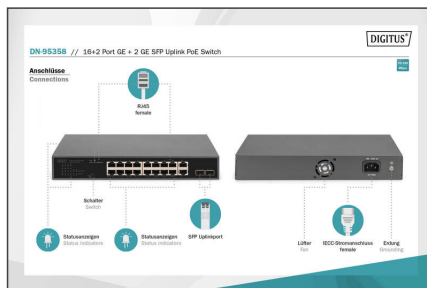
- Industrijska uporaba: Ne
- PoE (napajanje preko Ethernet): Da
- Prikladno za vanjsku primjenu: Ne
- Upravljanje: Ne
- VLAN: Da
- Zaštita od vandalizma: Ne

Package contents

- 16+2 Port GE + 2GE SFP Uplink PoE Switch
- Power Cord
- QIG

Logistics						
	Number (pcs)	Weight (kg)	Depth (cm)	Width (cm)	Height (cm)	cm³
Packaging Unit Carton	5	12.88	39.00	42.60	26.50	44,027.10
Packaging Unit Inside	1	2.58	0.00	0.00	0.00	0.00
Packaging Unit Single	1	2.58	23.00	37.00	8.00	6.81
Net single without Packaging	0	1.81	18.00	28.00	4.40	2,217.60

More images:



Safety notes

- This product is intended for indoor use only.
- Read all instructions and follow all warnings and instructions on the device.
- Do not place this appliance on an unstable surface (such as a trolley, stand, table, etc.).
- Do not use this appliance near water.
- Do not place this appliance near or above a radiator.
- The housing is equipped with openings for heat dissipation and ventilation. To prevent overheating during operation, the ventilation openings must not be blocked or covered.
- Do not place the appliance on a soft surface (e.g. bed, sofa, blanket, etc.). This will block the ventilation.
- The appliance must not be installed in a closed environment if adequate ventilation is not guaranteed.
- Do not spray any liquids onto the appliance.
- Disconnect the mains plug before cleaning. Do not use any liquid or foam cleaners.
- Clean the appliance with a damp cloth.
- Connect the device according to the power supply on the rating plate.
- To prevent damage to the appliance, it is important that all appliances are properly earthed.
- Do not place any objects on the power cable and lay it in such a way as to avoid tripping hazards.
- Use a surge protector, a regulator or an uninterruptible power supply (UPS) to protect your system from sudden, temporary and reduced power.
- Secure the system cable and mains cable properly and ensure that no objects are pressing on the cable.
- Do not insert any objects into the appliance through the openings in the housing. There is a risk of a short circuit, which can lead to fire or electric shock.
- Do not attempt to repair the appliance yourself. Always contact an authorized customer service centre.
- If any of the following conditions occur, unplug the appliance and return it to an authorized service centre for repair
- The mains cable, power supply unit or plug for the power supply is damaged or worn;
- Liquid has penetrated the appliance;
- The device has been exposed to rain or water;
- The device has been dropped or the housing has been damaged;
- The function of the device has obviously changed;
- The appliance cannot be operated as described in the operating instructions.

EU responsible person

EU based economic operator ensuring the product complies with the required regulations.
 ASSMANN Electronic GmbH
 Auf dem Schüffel 3
 Lüdenscheid, Germany

<https://www.assmann.com>
info@assmann.com