

# DIGITUS 16-Port Fast Ethernet PoE Networkswitch, 19 Zoll, unmanaged, 2+1 Uplink Ports, RJ45 + SFP, 185 W, af/at

DN-95355  
EAN 4016032485056



### 16 Port 10/100 Mbps PoE Switch 16 x10/100Mbps PoE RJ45 Ports,1x GE RJ45,1x SFP

DN-95355 PoE Switch is 16-port 10/100Mbps PoE + 1G Combo +1GE PoE Switch. The PoE ports can automatically detect and supply power to IEEE802.3af/at compliant Powered Devices (PD). The electrical power and data transmission on the same cable can expand your network to the places where no power lines or outlets, where you can install devices such as APs, IP cameras, or IP phones etc. The PoE Switch provides a simple, cost-effective, and non-blocking wire-speed performance with 11-inch metal shape for rack deployment in office or department network application.

#### Key Function: VLAN & CCTV & PD-Alive

- Interface: 16 x 10/100Mbps RJ45 port, 1 x 10/100/1000Mbps Combo port, 1 x 10/100/1000Mbps RJ45 port
- PoE standard: IEEE802.3af/at
- PoE Port: 1~16
- PoE Budget: 185W
- Power supply: 200W
- Key function: CCTV & VLAN
- PoE port output: Max 30W
- RJ45 PoE power supply: Mode A 1/2(+), 3/6 (-)
- Indicator: PWR, LNK/ACT, PoE, PoE Max
- Network media: 10BASE-T: UTP cables in categories 3, 4, 5 (≤100m), 100BASE-TX: UTP cables in categories 5, 5e (≤100m), 1000BASE-T: UTP cables in categories 5e, 6 (≤100m), 1000BASE-X: SMF, MMF

- MAC Address Table: 8K, Auto-learning, Auto-aging
- Packet buffer: 4Mbit
- Transfer Mode: Store-and-forward
- Packet Forward Speed: 5.4Mpps
- Maximum Packet Length: 16K
- Bandwidth: 7.2Gbps
- Device Dimension: 280x180x44mm
- Mains Input: 100~240V AC, 50/60Hz
- Operating Temperature: 0°C ~ 40 °C
- Storage Temperature: -40 °C ~ 70 °C
- Operating Humidity: 10% ~ 90% non-condensing
- Storage Humidity: 5% ~ 90% non-condensing
- Surge Protection: Common mode ±4KV, differential mode ±2KV
- MTBF: >50000 hour
- Electrostatic standard: Contact 4KV, air 6KV
- Rack Installation: Yes

#### Attributes

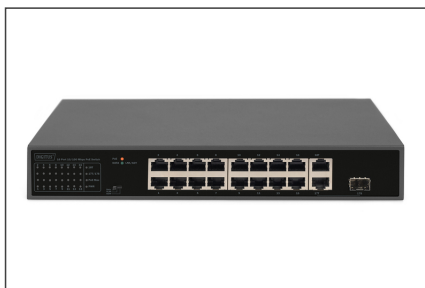
- Industrijska uporaba: Ne

#### Package contents

- 16 +2 Port FE PoE Switch
- Powercord
- QIG

| Logistics                    |              |             |            |            |             |                 |
|------------------------------|--------------|-------------|------------|------------|-------------|-----------------|
|                              | Number (pcs) | Weight (kg) | Depth (cm) | Width (cm) | Height (cm) | cm <sup>3</sup> |
| Packaging Unit Carton        | 5            | 12.50       | 26.00      | 38.30      | 42.60       | 42,421.10       |
| Packaging Unit Inside        | 1            | 2.50        | 0.00       | 0.00       | 0.00        | 0.00            |
| Packaging Unit Single        | 1            | 2.50        | 8.00       | 23.00      | 37.00       | 6.81            |
| Net single without Packaging | 0            | 1.75        | 4.40       | 18.00      | 28.00       | 2,217.60        |

**More images:**



**Safety notes**

- This product is intended for indoor use only.
- Read all instructions and follow all warnings and instructions on the device.
- Do not place this appliance on an unstable surface (such as a trolley, stand, table, etc.).
- Do not use this appliance near water.
- Do not place this appliance near or above a radiator.
- The housing is equipped with openings for heat dissipation and ventilation. To prevent overheating during operation, the ventilation openings must not be blocked or covered.
- Do not place the appliance on a soft surface (e.g. bed, sofa, blanket, etc.). This will block the ventilation.
- The appliance must not be installed in a closed environment if adequate ventilation is not guaranteed.
- Do not spray any liquids onto the appliance.
- Disconnect the mains plug before cleaning. Do not use any liquid or foam cleaners.
- Clean the appliance with a damp cloth.
- Connect the device according to the power supply on the rating plate.
- To prevent damage to the appliance, it is important that all appliances are properly earthed.
- Do not place any objects on the power cable and lay it in such a way as to avoid tripping hazards.
- Use a surge protector, a regulator or an uninterruptible power supply (UPS) to protect your system from sudden, temporary and reduced power.
- Secure the system cable and mains cable properly and ensure that no objects are pressing on the cable.
- Do not insert any objects into the appliance through the openings in the housing. There is a risk of a short circuit, which can lead to fire or electric shock.
- Do not attempt to repair the appliance yourself. Always contact an authorized customer service centre.
- If any of the following conditions occur, unplug the appliance and return it to an authorized service centre for repair
- The mains cable, power supply unit or plug for the power supply is damaged or worn;
- Liquid has penetrated the appliance;
- The device has been exposed to rain or water;
- The device has been dropped or the housing has been damaged;
- The function of the device has obviously changed;
- The appliance cannot be operated as described in the operating instructions.

**EU responsible person**

EU based economic operator ensuring the product complies with the required regulations.

ASSMANN Electronic GmbH  
 Auf dem Schüffel 3  
 Lüdenscheid, Germany  
<https://www.assmann.com>  
[info@assmann.com](mailto:info@assmann.com)