

DIGITUS Gigabit Outdoor 100W PoE Surge Protector

DN-95425
EAN 4016032482536



Outdoor POE Surge Protector (100W) 10/100/1000 Mbits -40 to 65C, IP67, 10KV, 20KA

DN-95425 is a single-port PoE surge protector designed for exterior applications with an IP 67 rated Aluminum alloy case. It supports 8 lines network signals and provides surge protection for PoE wires. The maximum common mode surge voltage is 10KV(10/700us) and max differential mode surge voltage is 6KV(10/700us). It supports 10/100/1000Mbps of data rates. Ideal for 110W(max) PoE wires and well protects your devices against surge damage. Designed for outdoor use,the DN-95425 operates from -40 to +65 in an IP67 enclosure and works with voltage 60 Vdc(Max). Equip port should always be connected to device which you want it to be protected.

DN-95425 is a single-port PoE surge protector designed for exterior applications with an IP 67 rated Aluminum alloy case.

- maximum common mode surge voltage is 10KV(10/700us)
- and max differential mode surge voltage is 6KV(10/700us)
- supports 10/100/1000Mbps of data rates
- Ideal for 110W(max) PoE wires
- IP 67 ideal designed for outdoor use
- IEEE802.3 10Base-T Ethernet
- IEEE802.3u 100Base-Tx Fast Ethernet
- IEEE802.3ab 1000Base-T Gigabit Ethernet
- Support PoE wire with IEEE802.3af/at standards
- Support 100W PoE++ standards
- Operating Voltage : Support Max 60Vdc
- Maximum Operating DC Current :1A for 2 pairs, 2A for 4 pairs, maximum100W
- Power Pins: 4/5(+), 7/8(-) and 3/6(+),1/2(-)

- Data Speed: 10/100/1000Mbps
- Operating Temperature: -40 to 65
- Operating Humidity: 20% to 80%, non-condensation
- Storage Temperature: -40 to 85
- Storage Humidity: 10% to 95%, non-condensation
- Operating Altitude: up to 5000meters
- Max Discharge Current: 20KA(8/20us,2.5KA per line)
- Protected Line: 1,2,3,4,5,6,7,8
- Common Mode Protection Level(10/700us): 10KV
- Differential Mode Protection Level(10/700us): 6KV
- Clamping Voltage(Line to GND): 120V
- Clamping Voltage(Line to Line): 25V
- Insertion Loss @10MHz/100MHz: -1db
- Return Loss @10MHz/100MHz: -20db
- Response Time: 5ns
- Case: Aluminium alloy
- Color: White
- Mounting: Wall-mounted
- IP Rated: IP67
- Size: 209mm X 53mm X 37.5mm
- Weight: 380g

Attributes

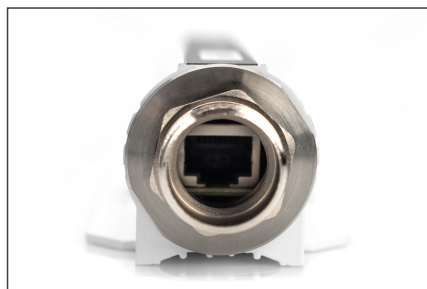
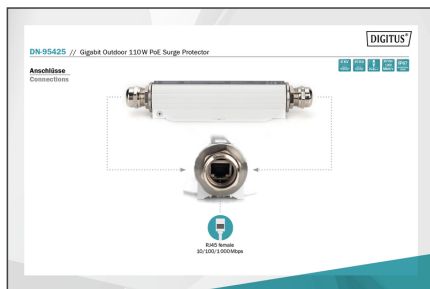
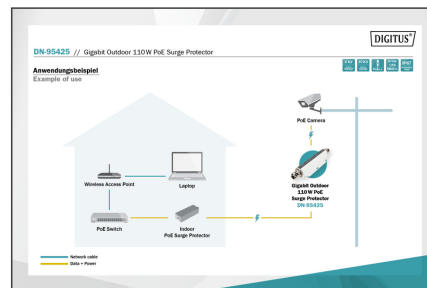
- Industrijska uporaba: Ne

Package contents

- PoE Surge Protector x1
- Ground lug Wire: 16AWG x1
- Manual x 1

Logistics						
	Number (pcs)	Weight (kg)	Depth (cm)	Width (cm)	Height (cm)	cm ³
Packaging Unit Carton	30	14.20	25.00	39.50	28.50	28,143.80
Packaging Unit Inside	1	0.47	0.00	0.00	0.00	0.00
Packaging Unit Single	1	0.47	6.20	23.40	5.10	739.91
Net single without Packaging	0	0.37	5.30	20.00	3.76	398.24

More images:



Safety notes

- This product is intended for indoor use only.
- Read all instructions and follow all warnings and instructions on the device.
- Do not place this appliance on an unstable surface (such as a trolley, stand, table, etc.).
- Do not use this appliance near water.
- Do not place this appliance near or above a radiator.
- The housing is equipped with openings for heat dissipation and ventilation. To prevent overheating during operation, the ventilation openings must not be blocked or covered.
- Do not place the appliance on a soft surface (e.g. bed, sofa, blanket, etc.). This will block the ventilation.
- The appliance must not be installed in a closed environment if adequate ventilation is not guaranteed.
- Do not spray any liquids onto the appliance.
- Disconnect the mains plug before cleaning. Do not use any liquid or foam cleaners.
- Clean the appliance with a damp cloth.
- Connect the device according to the power supply on the rating plate.
- To prevent damage to the appliance, it is important that all appliances are properly earthed.
- Do not place any objects on the power cable and lay it in such a way as to avoid tripping hazards.
- Use a surge protector, a regulator or an uninterruptible power supply (UPS) to protect your system from sudden, temporary and reduced power.
- Secure the system cable and mains cable properly and ensure that no objects are pressing on the cable.
- Do not insert any objects into the appliance through the openings in the housing. There is a risk of a short circuit, which can lead to fire or electric shock.
- Do not attempt to repair the appliance yourself. Always contact an authorized customer service centre.
- If any of the following conditions occur, unplug the appliance and send it to an authorized service centre for repair:
 - The mains cable, power supply unit or plug for the power supply is damaged or worn;
 - Liquid has penetrated the appliance;
 - The device has been exposed to rain or water;
 - The device has been dropped or the housing has been damaged;
 - The function of the device has obviously changed;
 - The appliance cannot be operated as described in the operating instructions.

EU responsible person

EU based economic operator ensuring the product complies with the required regulations.
 ASSMANN Electronic GmbH
 Auf dem Schüffel 3
 Lüdenscheid, Germany

<https://www.assmann.com>
info@assmann.com