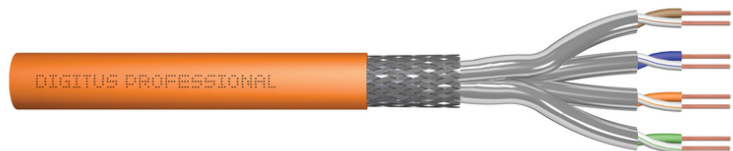


DIGITUS Cat.7 S/FTP installation cable, 50 m, simplex, Dca-s1a d1 a1

DK-1743-VH-050
EAN 4016032480785



CAT 7 S-FTP Installationskabel, 1200 MHz Dca (EN 50575), AWG 23/1, 50m ring,SX, orange

The Digitus® Cat.7 S/FTP installation cable features the following cable structure 4x2x AWG23/1 and reaches a transmission frequency of up to 1200 MHz. The halogen-free cable sheath complies with the IEC 60332-3-24 standard, FRNC-C, LSZH-3, and BauPVO Euroclass Dca. The cable is suitable for structured building cabling in secondary and tertiary areas. Compliant with ISO/IEC 11801, DIN EN 50173, and DIN EN 50288-4-1 standards.

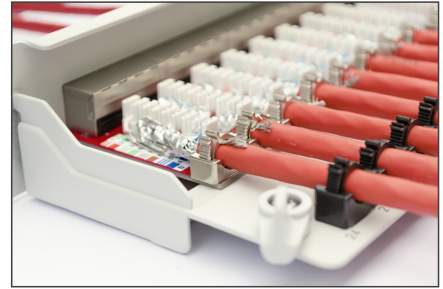
Future-oriented standards and high-end quality for your network.

- Conductor: Bare copper wire, AWG 23/1
- System(s) of assessment and verification of constancy of performance: System 3
- Insulation: SFS-PE (foamed polyethylene jacket)
- Total number of insulated conductors: 8, twisted into 4 pairs
- Color code: Blue-white, orange-white, green-white, brown-white
- Shielding of the individual pairs: aluminum-laminated polyester film, covers 100%
- Overall shielding: copper braiding
- Outer sheath: Eca to B2ca in accordance with EN 50575; LSZH
- Outer sheath thickness (nominal): 0.50 mm (Eca); 0.52 mm (Dca); 0.60 mm (Cca); 0.60 (B2ca)
- Color: Orange (RAL 2008)
- Mechanical properties:
- Strain relief: 150N max.
- Dynamic bending radius: 8x AD mm min.
- Static bending radius: 4x AD mm min.
- Transport and storage temperature range: -20 °C to +75 °C
- Operating temperature range: -20 °C to +50 °C
- Installation temperature range: 0 °C to +50 °C
- Outer diameter simplex (nominal): 7.0 mm (Eca); 7.2 mm (Dca); 7.5 mm (Cca); 7.5 mm (B2ca)

- Weight (kg/km): 49.5 kg (Eca); 51 kg (Dca), 53 kg (Cca); 53 kg (B2ca)
- Electrical properties:
- Impedance: 100±15 Ohm @ 4 - 1000 MHz; 100±25 OHM @ 100-600 MHz
- Capacitance: 45pF/m nom. at 1KHz
- Capacitance: 40 pF/m nominal @ 1 KHz
- Insulation resistance: 5 GOhm x km min.
- DC resistance: 95 Ohm/km max. (2% max. unbalanced resistance)
- Loop resistance: 190 Ohm/km max. (2% max. unbalanced resistance)
- Operating voltage: 72 Vdc max.
- Coupling attenuation: CA-Type 1b
- Phase delay: 450 nS/100 m max.
- Time delay: 10 nS/100 m max.
- Separation class: "d" according to EN 50174-2
- NVP: 79%
- Assortment: Twisted pair installation cable
- Length: 50 m
- Category: CAT 7
- Color: orange
- CPR: Dca
- Coat: LSOH
- Shielding: S-FTP, pairs shielded in metal foil and braid
- Cable construction: 4 x 2 AWG 23/1, solid twisted pair
- Assortment: Twisted Pair Installation Cables
- Category: CAT 7
- Shielding: S-FTP, pairs in metal foil and braid shielding
- CPR: Dca
- Length: 50 m
- Color: orange
- Jacket: LSOH
- Structure: 4 x 2 AWG 23/1, solid twisted pair

Logistics						
	Number (pcs)	Weight (kg)	Depth (cm)	Width (cm)	Height (cm)	cm ³
Packaging Unit Carton	8	178.14	120.00	80.00	120.00	1,152,000.00
Packaging Unit Inside	1	22.27	0.00	0.00	0.00	0.00
Packaging Unit Single	1	22.27	36.00	44.00	30.50	48.31
Net single without Packaging	0	0.00	12.00	24.00	80.00	23.04

More images:



DIGITUS

AWG 23/1 1200 MHz 10 Gbit Ethernet CAT 7 1000 Mbps

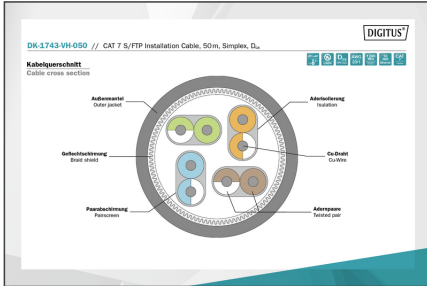
207 +50/-5 LSZH Dca CPE class

CAT 7 S/FTP Installation Cable, 50m, Simplex, D_{ca}

DIGITUS

DK-1743-VH-050 // CAT 7 S/FTP Installation Cable, 50m, Simplex, D_{ca}

Anwendungsbeispiel
Example of use



DIGITUS

Produktdaten / Product Information		Physikalische Spezifikationen / Physical Properties	
Produktname / Product Name	DIGITUS CAT 7 S/FTP Installation Cable, 50m, Simplex, D _{ca}	Norm / Standard	ISO/IEC 11801 Class E, ANSI/TIA 568 Class F
Produktbeschreibung / Product Description	100% Kupfer, 100% LSZH, 100% Dca, 100% CPE class	Leistung / Power	10 Gbit Ethernet, 1000 Mbps
Material / Material	100% Kupfer, 100% LSZH, 100% Dca, 100% CPE class	Temperaturbereich / Temperature Range	-20°C bis +70°C
Abmessungen / Dimensions	AWG 23/1, 1200 MHz, 10 Gbit Ethernet, CAT 7 1000 Mbps	Bestandteile / Components	207 +50/-5, LSZH, Dca, CPE class

DIGITUS

Leistungseigenschaften / Performance Properties

PROZ.	100	90	80	70	60	50	40	30	20	10	0
1	2	3	4	5	6	7	8	9	10	11	12
13	14	15	16	17	18	19	20	21	22	23	24
25	26	27	28	29	30	31	32	33	34	35	36
38	39	40	41	42	43	44	45	46	47	48	49
52	53	54	55	56	57	58	59	60	61	62	63
66	67	68	69	70	71	72	73	74	75	76	77
80	81	82	83	84	85	86	87	88	89	90	91
94	95	96	97	98	99	100	101	102	103	104	105

Certificate
No. 19374-11-E

Zertifikat
Nr. 19374-11

Category 7

GHMT

Certificate
No. 19374-11

Zertifikat
Nr. 19374-11

Class E

GHMT

DIGITUS

Leistungseigenschaften / Performance Properties

PROZ.	100	90	80	70	60	50	40	30	20	10	0
1	2	3	4	5	6	7	8	9	10	11	12
13	14	15	16	17	18	19	20	21	22	23	24
25	26	27	28	29	30	31	32	33	34	35	36
38	39	40	41	42	43	44	45	46	47	48	49
52	53	54	55	56	57	58	59	60	61	62	63
66	67	68	69	70	71	72	73	74	75	76	77
80	81	82	83	84	85	86	87	88	89	90	91
94	95	96	97	98	99	100	101	102	103	104	105

