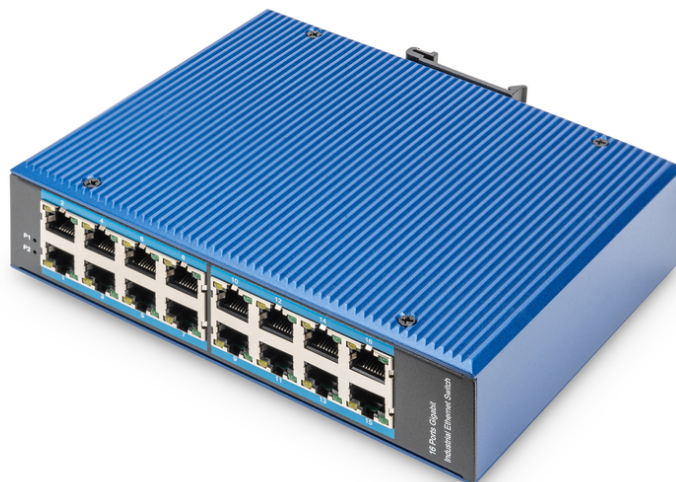


# DIGITUS 16 Port Gigabit Ethernet Network Switch, Industrial, Unmanaged

DN-651129  
EAN 4016032478089



## 16 Port 10/100/1000Mbps Industrial Switch Wall-mount and DIN-Rail

The DIGITUS® Industrial Gigabit Switch was designed for harsh environments in which it is exposed to moisture, temperature fluctuations and vibrations. With a temperature range from -40 °C to 80 °C, the Gigabit Switch with an IP40 housing can be used under the most adverse of conditions. Thanks to redundant power supply, it guarantees constant availability in highly sensitive sectors such as transport, production, transport and security surveillance. With its 16 Gigabit Ethernet ports, it is designed for a wide range of applications.

### Robust and durable industrial solution for high temperature ranges and rough industrial environments - redundant power supply possible

- Number of RJ45 ports: 16 x 10/100/1000Mbps
- Auto-Negotiation / Auto MDI/MDI-X function
- Backplane bandwidth: 52 Gbps
- Forwarding capacity: 38.7 Mpps
- Packet buffer memory: 4.1 Mbit
- MAC addresses: 8K
- Full-duplex flow control IEEE802.3x
- Network protocols: IEEE802.3, IEEE802.3i, IEEE802.3u, IEEE802.3ab, IEEE802.3z, IEEE802.3x
- Input voltage: 12 - 52 V DC, redundant power supply
- Power consumption: <10 W
- Overvoltage protection: +/- 4 kV
- Supports air discharge +/- 12kV
- Supports contact discharge +/-8kV

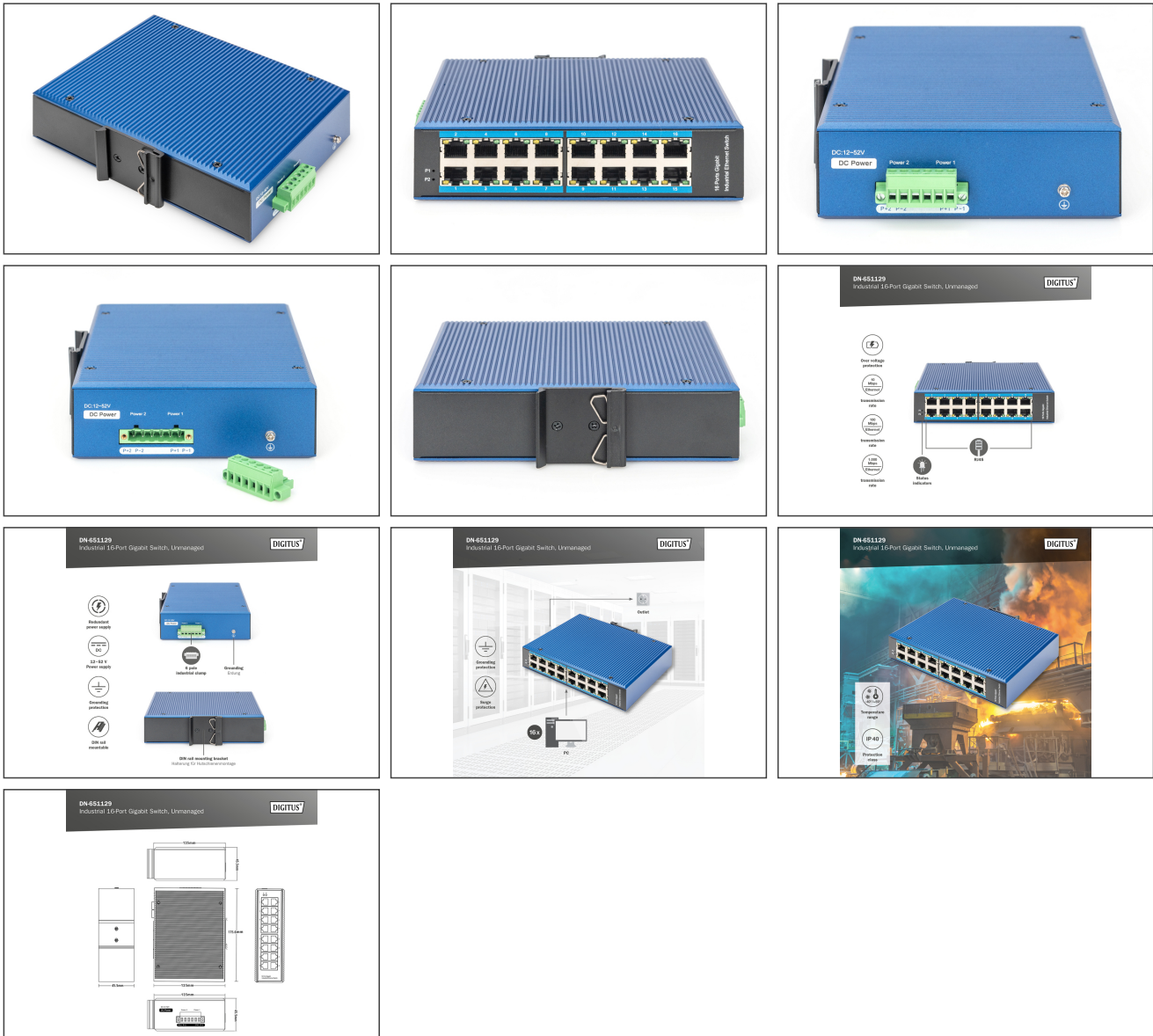
- Industrial standards: IEC 61000-4-4(EFT) IEC 61000-4-5 (Surge), Shock IEC 60068-2-27, Fire IEC 60068-2-32, Vibration: IEC 60068-2-6
- Average operating time: 300,000 h
- Protection against vibrations and shocks
- Suitable for top-hat rail mounting
- Fanless design
- Operating temperature: -40°C ~ 80°C
- Storage temperature: -40°C ~ 80°C
- Operating humidity: 5% ~ 95% (non-condensing)
- Protection class: IP40
- Jumbo Frame Size: 9 kB
- Housing: Aluminum
- Dimensions (WxDxH): 175.6 x 135 x 45.5 mm
- Weight: 1000 g
- Color: Blue
- Broj priključaka: 16
- Ethernet brzina: Gigabit
- Industrijska uporaba: Da
- PoE (napajanje preko Ethernet): Ne
- Prikladno za vanjsku primjenu: Ne
- Upravljanje: Ne
- VLAN: Ne
- Vrsta instalacije: DIN tračnica
- Zaštita od vandalizma: Ne

### Package contents

- 1 x Industrial 16-Port Gigabit Switch, unmanaged
- 1 x User manual

Logistics						
	Number (pcs)	Weight (kg)	Depth (cm)	Width (cm)	Height (cm)	cm <sup>3</sup>
Packaging Unit Carton	12	13.00	39.00	46.50	22.50	40,803.80
Packaging Unit Inside	1	1.08	0.00	0.00	0.00	0.00
Packaging Unit Single	1	1.08	18.60	20.80	7.25	2,804.88
Net single without Packaging	0	0.90	13.60	17.90	4.60	1,119.82

More images:



Safety notes

- This product is intended for indoor use only.
- Read all instructions and follow all warnings and instructions on the device.
- Do not place this appliance on an unstable surface (such as a trolley, stand, table, etc.).
- Do not use this appliance near water.
- Do not place this appliance near or above a radiator.
- The housing is equipped with openings for heat dissipation and ventilation. To prevent overheating during operation, the ventilation openings must not be blocked or covered.
- Do not place the appliance on a soft surface (e.g. bed, sofa, blanket, etc.). This will block the ventilation.
- The appliance must not be installed in a closed environment if adequate ventilation is not guaranteed.
- Do not spray any liquids onto the appliance.
- Disconnect the mains plug before cleaning. Do not use any liquid or foam cleaners.
- Clean the appliance with a damp cloth.
- Connect the device according to the power supply on the rating plate.
- To prevent damage to the appliance, it is important that all appliances are properly earthed.
- Do not place any objects on the power cable and lay it in such a way as to avoid tripping hazards.
- Use a surge protector, a regulator or an uninterruptible power supply (UPS) to protect your system from sudden, temporary and reduced power.
- Secure the system cable and mains cable properly and ensure that no objects are pressing on the cable.
- Do not insert any objects into the appliance through the openings in the housing. There is a risk of a short circuit, which can lead to fire or electric shock.
- Do not attempt to repair the appliance yourself. Always contact an authorized customer service centre.
- If any of the following conditions occur, unplug the appliance and send it to an authorized service centre for repair
- The mains cable, power supply unit or plug for the power supply is damaged or worn;

- Liquid has penetrated the appliance;
- The device has been exposed to rain or water;
- The device has been dropped or the housing has been damaged;
- The function of the device has obviously changed;
- The appliance cannot be operated as described in the operating instructions.

**EU responsible person**

EU based economic operator ensuring the product complies with the required regulations.

ASSMANN Electronic GmbH  
Auf dem Schüffel 3  
Lüdenscheid, Germany  
<https://www.assmann.com>  
[info@assmann.com](mailto:info@assmann.com)