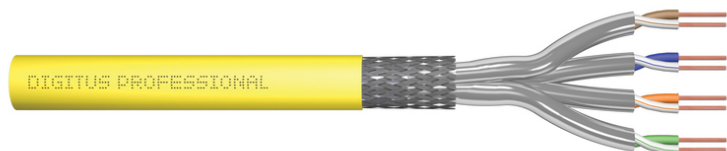


DIGITUS CAT 7A S/FTP, installation cable, 500 m, simplex, Dca-s1a d1 a1

DK-1743-A-VH-5-LD
EAN 4016032455394



CAT 7A S-FTP installation cable, 1250 MHz Dca, AWG 23/1, 500 m drum, simplex, color yellow

The Digitus CAT 7A installation cable is designed for use in the structured data center and the building cabling according to ISO/IEC 11801, DIN EN 50288-4-1, DIN EN 50173, IEC 61156-7, EN 50288-9-1. The cable is perfectly suitable for the transmission of both analog and digital data and also supports POE and POE+. The shielding structure is composed of single shielded pairs with a tinned copper braid, which ensures excellent shielding and electrical values.

Future-oriented standards and high-end quality for your network.

- Physical properties:
- Conductor: Bare copper wire, AWG 23/1
- System(s) for the assessment and verification of constancy of performance: System 3
- Insulation: SFS-PE (foamed polyethylene jacket)
- Total number of insulated conductors: 8, twisted into 4 pairs
- Color code: Blue-white, orange-white, green-white, brown-white
- Shielding of the individual pairs: aluminum-laminated polyester film, covers 100%
- Overall shielding: tinned copper braiding
- Outer sheath: Dca to Cca in accordance with EN 50575; LSZH
- Outer sheath thickness (nominal): 0.60 mm (Dca); 0.60 mm (Cca)
- Outer sheath color: Yellow (RAL 1028)
- Mechanical properties:
- Strain relief: 150 N max.
- Dynamic bending radius: 8x AD mm min.
- Static bending radius: 4x AD mm min.
- Transport and storage temperature range: -20 °C to +60 °C

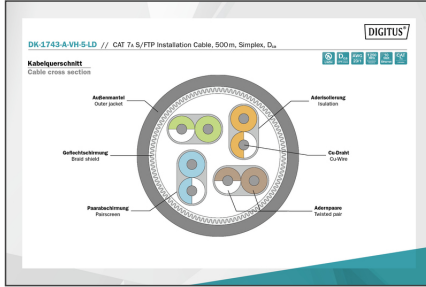
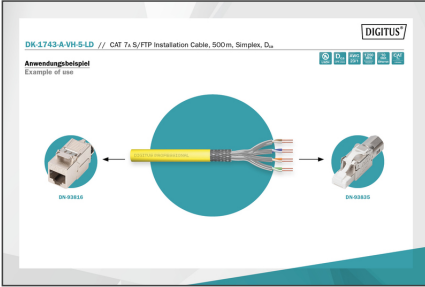
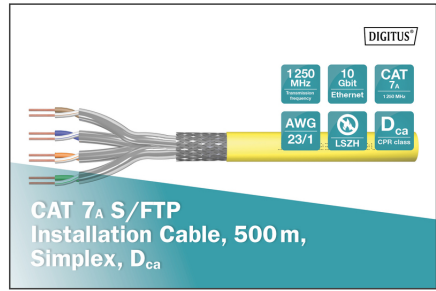
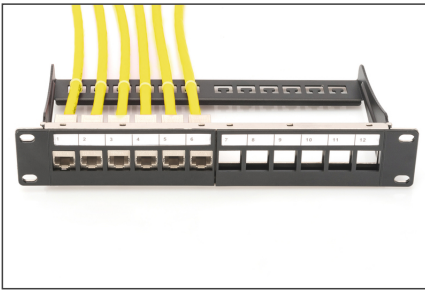
- Operating temperature range: -20 °C to +60 °C
- Installation temperature range: 0 °C to +50 °C
- Outer diameter (nominal): 7.8 mm (Dca); 7.8 mm (Cca)
- Weight (kg/km): 65 kg (Dca); 65 kg (Cca)
- Electrical properties:
- Impedance: 100±5 Ohm @ 1-1250 MHz
- Capacitance: 40 pF/m nominal @ 1 KHz
- Capacitance unbalance (pair-earth): 1.6 pF/m max. @ 1 KHz
- Insulation resistance: 5 GOhm x km min.
- Loop resistance: 147 Ohm/Km max. (2% max. unbalanced resistance)
- Operating voltage: 72 Vdc max.
- Coupling attenuation: CA-Type 1b
- Phase delay: 450 nS/100 m max.
- Time delay: 10 nS/100 m max.
- Separation class: "d" according to EN 50174-2
- NVP: 79%
- Flame spread: EN 60332-1-2 (LSOH-PVC)
- Halogen-free, corrosiveness: EN 60754-1/2 (LSOH)
- Smoke density: EN 61034-2

Attributes

- Assortment: Twisted Pair Installation Cables
- Category: CAT 7A
- Shielding: S-FTP, pairs in metal foil and braid shielding
- CPR: Dca
- Length: 500 m
- Color: yellow
- Jacket: LSOH
- Structure: 4 x 2 AWG 23/1, solid twisted pair

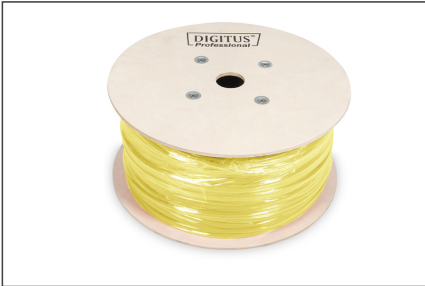
Logistics						
	Number (pcs)	Weight (kg)	Depth (cm)	Width (cm)	Height (cm)	cm ³
Packaging Unit Carton	1	33.50	53.00	53.00	43.50	122,192.00
Packaging Unit Inside	1	33.50	53.00	53.00	43.50	122,192.00
Packaging Unit Single	1	33.50	53.00	53.00	43.50	122,192.00
Net single without Packaging	0	0.00	0.00	0.00	0.00	0.00

More images:



DK.1743-A-VH-S-LD // CAT 7A S/FTP Installation Cable, 500m, Simplex, D_{ca}

Produktinformationen Product Information	Physikalische Spezifikationen Physical Properties
Anwendungsbereich Netz-Coupler, Switches, Server, Video-Streaming Area of application Network-Coupler, Switches, Server, Video-Streaming	Leiter Kupfer Conductor Copper
Hersteller ASSMANN Electronic GmbH, 30644 Hannover, Deutschland Manufacturer ASSMANN Electronic GmbH, 30644 Hannover, Germany	Isoliertes Isoliermaterial 100% geschwemmtes Polyethylen (PE) oder Fluor-Isoliermaterial Insulated insulating material 100% swaged polyethylene (PE) or Fluor-Insulating material
Normen-Nr. ISO/IEC 11801, ISO/IEC 61904, ISO/IEC 11801-3, IEC 60332-1, IEC 60332-3	Leitfähigkeit Kupfer Conductivity Copper
Elektrische Eigenschaften Electrical Properties	Mechanische Eigenschaften Mechanical Properties
Standard CAT 7A S/FTP 1250 MHz	Standard CAT 7A S/FTP 1250 MHz
Wahlstrom 450 mA max. (24h)	Wahlstrom 450 mA max. (24h)
Lebensdauer 10 Jahre	Lebensdauer 10 Jahre
Temperaturbereich -20°C bis +70°C	Temperaturbereich -20°C bis +70°C
Temperaturbelastung 3000 h bei +70°C	Temperaturbelastung 3000 h bei +70°C
Temperaturbelastung 3000 h bei -20°C	Temperaturbelastung 3000 h bei -20°C
Temperaturbelastung 3000 h bei +25°C	Temperaturbelastung 3000 h bei +25°C
Temperaturbelastung 3000 h bei -25°C	Temperaturbelastung 3000 h bei -25°C
Temperaturbelastung 3000 h bei +40°C	Temperaturbelastung 3000 h bei +40°C
Temperaturbelastung 3000 h bei -40°C	Temperaturbelastung 3000 h bei -40°C
Temperaturbelastung 3000 h bei +55°C	Temperaturbelastung 3000 h bei +55°C
Temperaturbelastung 3000 h bei -55°C	Temperaturbelastung 3000 h bei -55°C
Temperaturbelastung 3000 h bei +70°C	Temperaturbelastung 3000 h bei +70°C
Temperaturbelastung 3000 h bei -70°C	Temperaturbelastung 3000 h bei -70°C



Safety notes

- Data cables must not be bent, stretched or twisted excessively. Sharp bends can damage the cable sheath and lead to failures or short circuits.
- Installation only by trained specialists.
- Installation only in dry rooms.
- The data cable must not be in direct contact with other electrical cables or high-voltage sources in order to avoid electromagnetic interference.

EU responsible person

EU based economic operator ensuring the product complies with the required regulations.

ASSMANN Electronic GmbH
 Auf dem Schüffel 3
 Lüdenscheid, Germany
<https://www.assmann.com>
 info@assmann.com