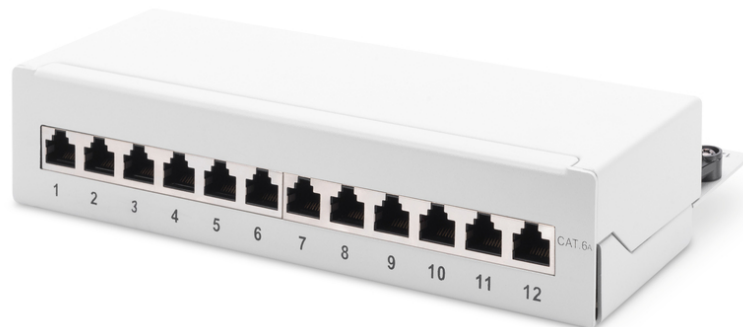


# DIGITUS Desktop CAT 6A, class EA patch panel, shielded, gray

**DN-91612SD-EA-G**  
**EAN 4016032444886**



### DN-91612SD-EA-G Desktop 12-port CAT 6A Panel STP

The Desktop Patch Panels from DIGITUS® are the ideal solution for SoHo applications (Smart Office Home Office) The fully shielded RJ45 sockets offer optimum support for your cables with the best performance.

#### Use in SOHO applications

- Transmission characteristics: Category 6A, class EA
- Application areas: Up to 500 MHz, 10GBase-T
- Standards: ISO/IEC 11801 2nd Ed., EN 50173-1, EIA/TIA 568-C, 802.3af, 802.3at PoE+
- General properties:
- Suitable for surface-mounted installations
- RJ45 sockets, 8P8C
- Cable installation via LSA strips, color-coded according to EIA/TIA 568 A & B
- Cable fixing by means of quick latches
- Central earthing connection
- 360° shield contacting
- Mechanical properties:
- Housing material: 1.5 mm galvanized, cold-rolled steel according to EN1.4301, UNS S30400, AISI 304 and LMSAD110
- RJ45 socket material: ABS UL 94V-0
- Contact RJ45 socket: Nickel-plated phosphor bronze, 0.5 µ gold-plated contact
- RJ-45 shielding: Nickel-plated bronze

- LSA cutting clamp: Krone LSA+, UL 94V-2, galvanized phosphor bronze
- Earthing wire: Not included in the scope of delivery
- Printed circuit board: FR4, UL 94V-0
- Physical properties:
- Insertion force: 30N max. (IEC 60603-7-5)
- Tensile load: 7.7 kg between socket and plug
- Operating temperature: -20° C to +70 °C (ISO/IEC 11801, EN 50173-1, ANSI/TIA/EIA 568 C)
- Socket mating cycle: > 750 acc. to ISO/IEC 11801, IEC 60603-7-5
- Terminal: > 200 acc. to ISO/IEC 11801, IEC 60603-7-5
- Core receptacle: 22-26 AWG solid and stranded conductors
- Insulation resistance: > 500 MOhm
- Contact resistance: < 20 milliOhms
- Dielectric strength: 1000 VDC (contact/contact), 1500 VDC (contact/ground)

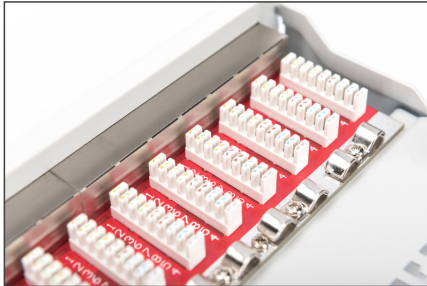
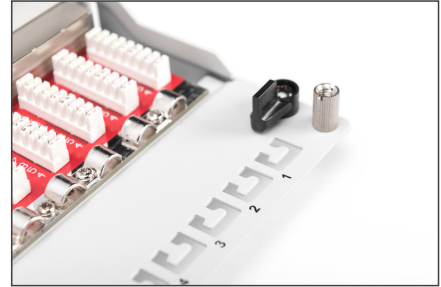
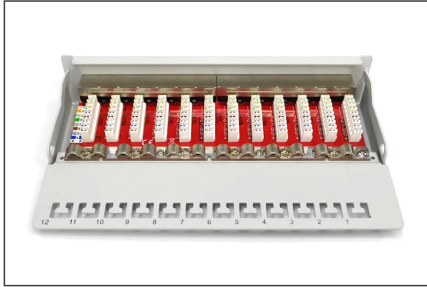
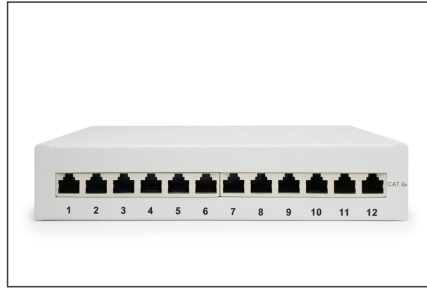
#### Attributes

- Boja: svijetlo siva, RAL 7035
- Jedinice: 1
- Priključci: 12
- Kategorija: CAT 6A

#### Package contents

- Table housing
- Installation instructions
- Cable tie

Logistics						
	Number (pcs)	Weight (kg)	Depth (cm)	Width (cm)	Height (cm)	cm <sup>3</sup>
Packaging Unit Carton	20	17.50	29.00	55.00	32.00	51.04
Packaging Unit Inside	1	0.88	12.00	26.50	6.00	1.91
Packaging Unit Single	1	0.88	12.00	26.50	6.00	1.91
Net single without Packaging	0	0.72	10.80	21.70	4.50	1,054.62

**More images:****Safety notes**

- Protect product from moisture
- Avoid antistatic charging when installing the product
- Observe the specifications of the raw cable manufacturer during installation

**EU responsible person**

EU based economic operator ensuring the product complies with the required regulations.

ASSMANN Electronic GmbH  
Auf dem Schüffel 3  
Lüdenscheid, Germany  
<https://www.assmann.com>  
[info@assmann.com](mailto:info@assmann.com)