

DIGITUS 4K HDMI EDID Emulator

DA-70466
EAN 4016032442554



HDMI EDID Emulator, for extender, switches, splitter, matrix switcher,

The Digitus 4K HDMI EDID Emulator continuously emulates a connected HDMI monitor so that the signal source does not change or disconnect your signal even when the connection is interrupted. It has preset EDID data (resolutions/timings), which can be found in the user manual. If EDID data of an individual monitor/display are missing, they can be read and cloned quickly and easily by means of the practical clone function. The emulator supports resolutions up to UHD 4K2K/60 Hz. The emulator offers the ideal solution for applications with HDMI extenders, splitters, switches or converters.

Emulates the EDID data for connected HDMI screens/monitors/TVs and solves possible transmission problems with the communicating devices (monitor, signal source)

- Emulates HDMI EDID (Extended Display Identification Data) information
- Solves possible transmission problems with the communicating devices (monitor, signal source), for example, at different resolutions, formats, etc.

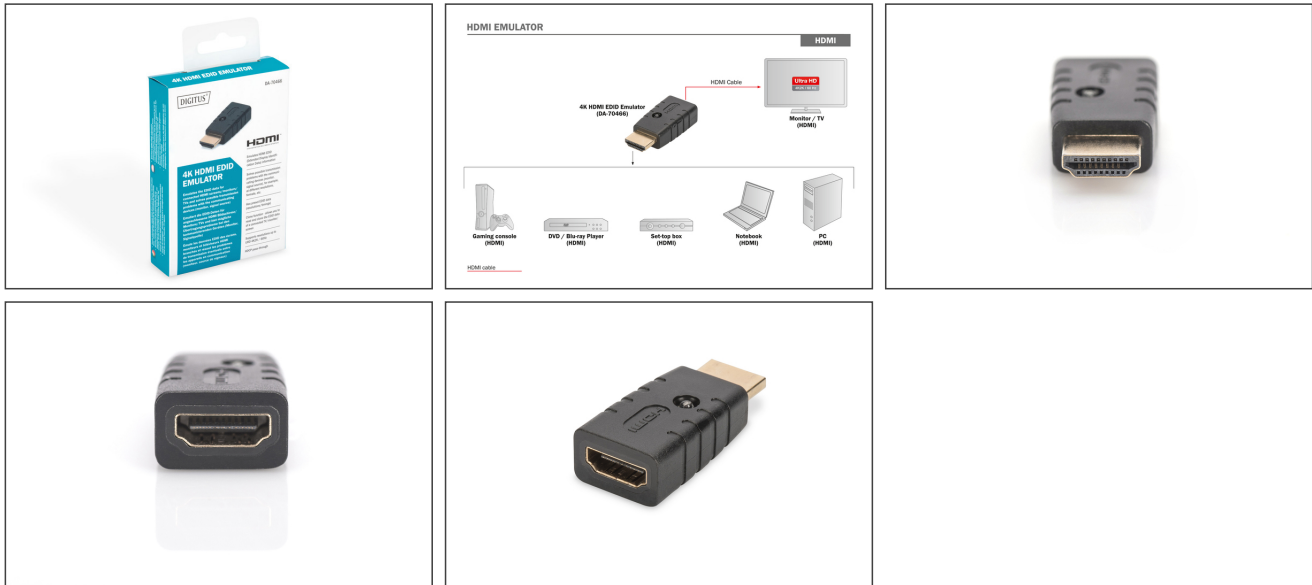
- Has preset EDID data (resolutions/timings)
- Clone function - allows you to read and clone the EDID data of a connected TV/monitor/screen
- Supports resolutions up to UHD 4K2K / 60Hz
- HDCP pass-through
- 1x HDMI input: HDMI connector for connection to the signal source
- 1x HDMI output: HDMI socket for connection of the HDMI cable
- Supports HDCP 2.2 / 1.4
- Supports VESA and CEA specifications
- LED activity indicator
- Requires no external power supply
- Dimensions: L 4.4 x W 2.0 x H 1.3 cm
- Weight: 15 g
- Color: black
- HDTV-norma: Ultra HD 4K
- Audio: Ne

Package contents

- 4K HDMI EDID Emulator
- Manual

Logistics						
	Number (pcs)	Weight (kg)	Depth (cm)	Width (cm)	Height (cm)	cm³
Packaging Unit Carton	100	16.70	39.50	25.00	30.00	29.63
Packaging Unit Inside	1	0.17	0.00	0.00	0.00	0.00
Packaging Unit Single	1	0.17	13.00	7.50	2.30	224.25
Net single without Packaging	0	0.10	4.40	2.00	1.20	10.56

More images:



Safety notes

- If the device is powered by a plug-in power supply, ensure that the power adapter is connected correctly and meets the specified requirements (e.g. voltage and current).
- Only use certified CAT5e or CAT6 cables to ensure stable signal transmission.
- For particularly long cable runs or in environments prone to interference, it is recommended to use shielded network cables.
- Make sure that all connections are tight and secure to avoid loose contacts that could affect the signal quality. Make sure that the HDMI and Ethernet connections are connected correctly.
- Make sure that the CAT cable is not laid near high-voltage power lines or other strong sources of electromagnetic interference to avoid signal interference.
- Only operate the device within the specified temperature range.
- Do not use the device outdoors or in damp or wet environments
- Check all connections and cables regularly for wear or damage. Cables and connections can wear out, especially with frequent use or long installations, which can lead to poor signal quality or system failure.

EU responsible person

EU based economic operator ensuring the product complies with the required regulations.

ASSMANN Electronic GmbH
 Auf dem Schüffel 3
 Lüdenscheid, Germany
<https://www.assmann.com>
info@assmann.com